



10 ASHDALE PARK, FINCHAMPSTEAD, WOKINGHAM, BERKSHIRE, RG40 3QS
£1,350,000 FREEHOLD

Winkworth



ASHDALE PARK

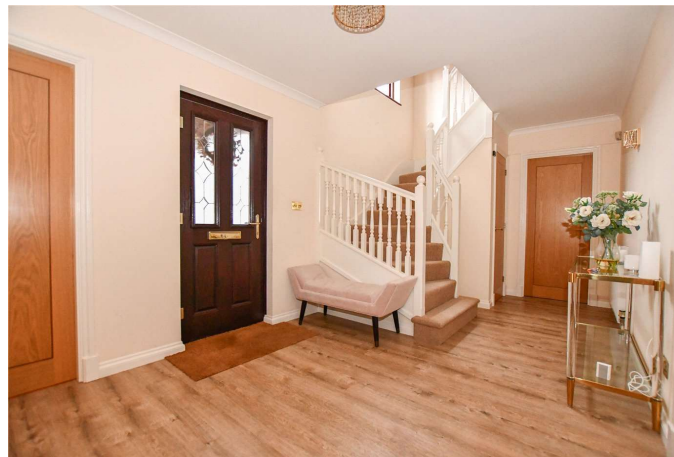
Occupying a generous plot of approximately 1/3 of an acre, this substantial detached family home spans over 2500 sq. ft. and offers considerable scope for extension (S.T.P.P.).

A generous reception hall leads to the dual aspect living room, dining room and open plan kitchen/family room which has been recently refitted by McEvoy & Rowley of Maidenhead with an extensive range of integrated appliances including four ovens, substantial fridge and freezer, wine cooler, induction hob with central recessed extractor along with a quooker tap and sink unit. The cabinets themselves are hand painted with oak shelving and granite work surfaces and there is a matching utility room behind a hidden door. Additional underfloor heating is installed to the kitchen/family room and Karndean flooring throughout the kitchen, dining room and hallway with new carpeting to the lounge. Upstairs there are four generous double bedrooms with en-suites to both the master and bedroom two, plus a further family shower room.

The stunning rear garden wraps around the property and is beautifully presented with various flower and shrub borders and extensive patio along with raised vegetable beds. To the front, there is off-street parking for several vehicles and a double garage with electric roller doors, personal door to the garden, as well as patio doors and a compliment of fitted base and eye level storage units.

Ashdale Park is a tranquil cul-de-sac within Finchampstead and every property further benefits from the use of a private 4 acre woodland.

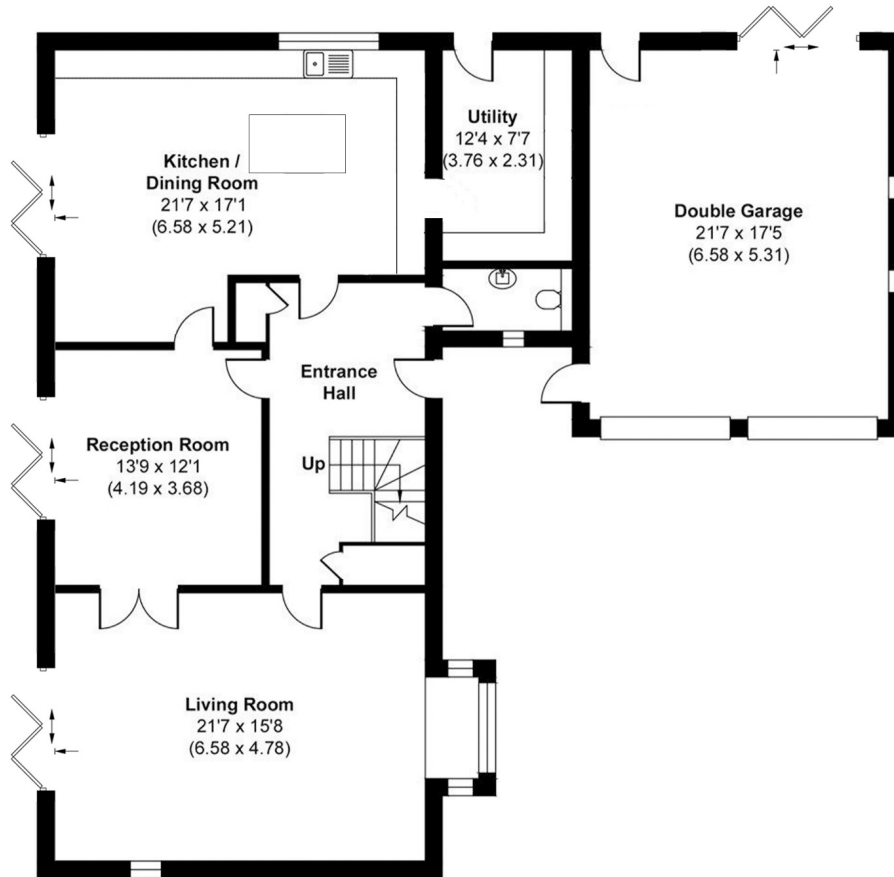
EPC: D



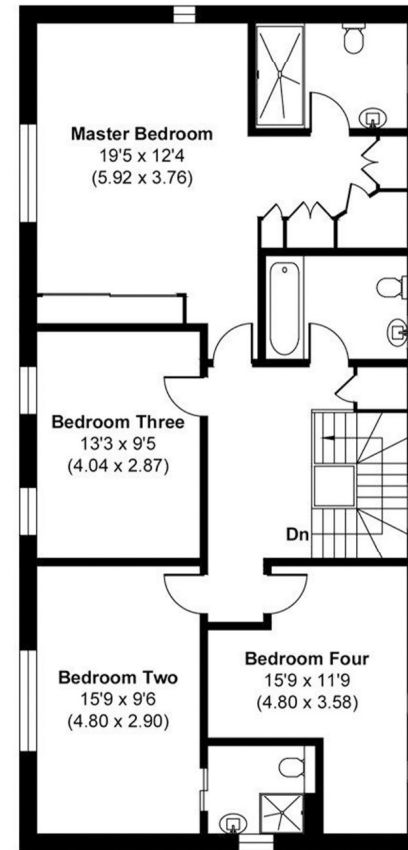


ASHDALE PARK

APPROX. GROSS INTERNAL FLOOR AREA 2596 SQ FT / 241.19 SQ METERS
(INCLUDES GARAGE)



GROUND FLOOR
APPROX. FLOOR
AREA 1573 SQ.FT.
(146.18 SQ.M.)



FIRST FLOOR
APPROX. FLOOR
AREA 1023 SQ.FT.
(95.01 SQ.M.)

Wokingham | 01189 072777 | wokingham@winkworth.co.uk



Winkworth wishes to inform prospective buyers and tenants that these particulars are a guide and act as information only. All our details are given in good faith and believed to be correct at the time of printing but they don't form part of an offer or contract. No Winkworth employee has authority to make or give any representation or warranty in relation to this property. All fixtures and fittings, whether fitted or not are deemed removable by the vendor unless stated otherwise and room sizes are measured between internal wall surfaces, including furnishings.