



Monson Road, NW10

£2,400 per month *Unfurnished*



Modern first floor, period conversion comprises of two large double bedrooms, a bright bay fronted reception room with hard wood flooring, stylish tiled bathroom and a separate fully fitted kitchen.

KEY FEATURES

- Bright Bay Fronted Reception Room
- Two Double Bedrooms
- Seperate Fully Fitted Kitchen
- Stylish Bathroom With Underfloor Heating
- Mixture Between Wooden Flooring And New Carpets
- Private Rear Garden



Kensal Rise & Queens Park

0208 960 4947 | kensalrise@winkworth.co.uk

Winkworth

for every step...



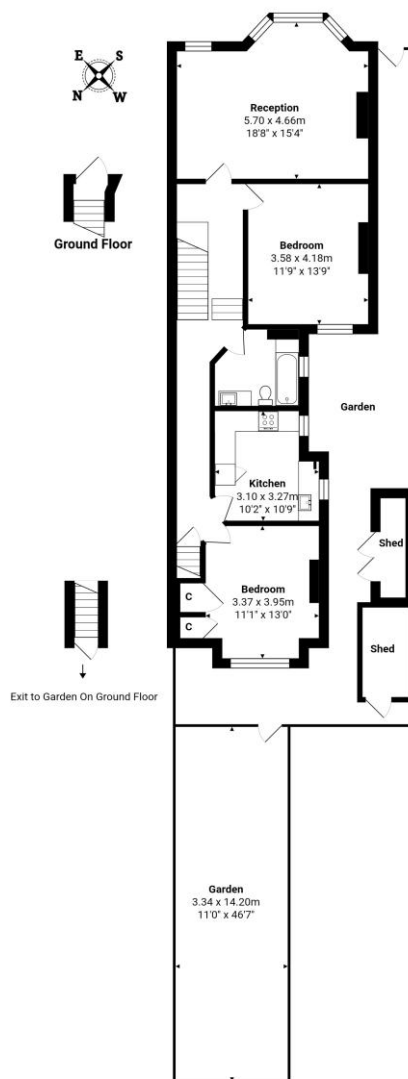


MATERIAL INFO

Deposit: 5 weeks rent

Holding Deposit: 1 weeks rent

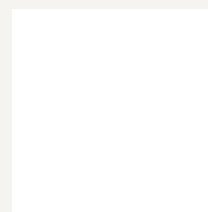
Council Tax Band: D



Total Area: 89.4 m² ... 962 ft² (excluding garden, shed)
All measurements are approximate and for display purposes only

Score	Energy rating	Current	Potential
92+	A		
81-91	B		
69-80	C		
55-68	D		64 D
39-54	E	50 E	
21-38	F		
1-20	G		

For more information, scan the QR code or visit the link below



<https://www.winkworth.co.uk/rent/property/KQP200210>

Where no figures are shown, we have been unable to ascertain the information. All figures that are shown were correct at the time of printing.

Kensal Rise & Queens Park

0208 960 4947 | kensalrise@winkworth.co.uk

Winkworth

for every step...

Winkworth wishes to inform prospective buyers and tenants that these particulars are a guide and act as information only. All our details are given in good faith and believed to be correct at the time of printing but they don't form part of an offer or contract. No Winkworth employee has authority to make or give any representation or warranty in relation to this property. All fixtures and fittings, whether fitted or not are deemed removable by the vendor unless stated otherwise and room sizes are measured between internal wall surfaces, including furnishings.