



MERTON ROAD, SW18
£2,250 PER MONTH FURNISHED

A stylish two bedroom maisonette with off street parking and a patio conveniently located between Southfields and Earlsfield

Southfields | 020 8877 1000 | southfields@winkworth.co.uk
241 Wimbledon Park Road, Southfields, London, SW18 5RJ

Winkworth

for every step...

winkworth.co.uk



SUMMARY:

A stylish two bedroom maisonette with off street parking and a patio conveniently located between Southfields and Earlsfield. This property is presented in excellent condition throughout. Furnished to a high standard there is a bright reception room towards the front with space for living, dining and excellent storage. Adjacent is a separate kitchen. Towards the back are two bedrooms, both with French doors opening onto a private patio. A modern shower room services both bedrooms. The property further benefits from a private entrance and off street parking space. Situated on Merton Road, the green open spaces of King Georges Park are right on the doorstep, whilst the wide range of shops, bars and restaurants in Southfields and Earlsfield are also nearby. The nearest stations are Southfields (District Line) and Earlsfield (SW Raile). There are bus links to Clapham Junction Rail Station which goes a short distance from the property.

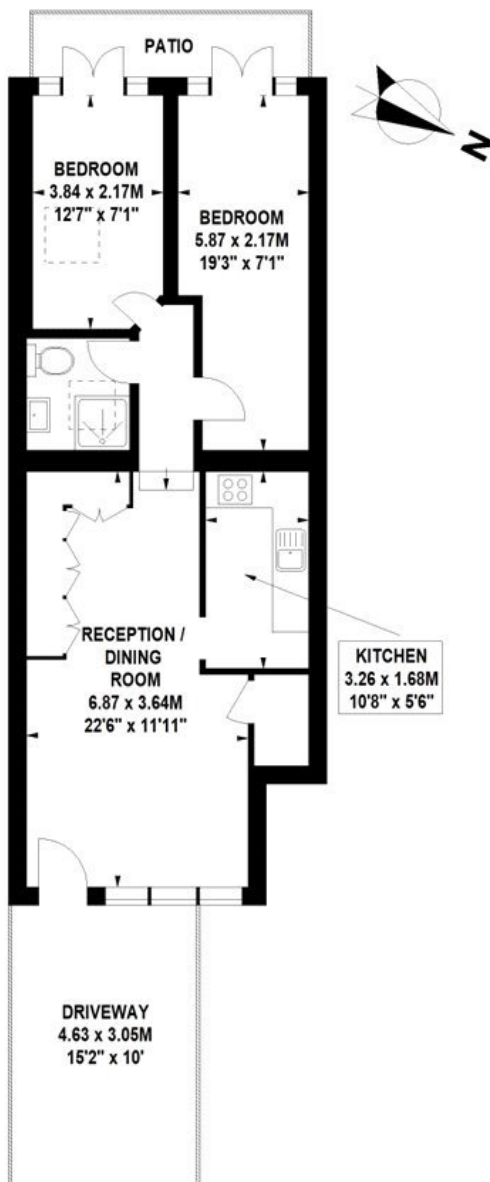
ACCOMMODATION

Long Let, 2 Bedrooms, 1 Reception Rooms, 1 Bathrooms, Maisonette, Ground Floor, Patio, Off Street Parking, Period, Town/City, Furnished, 624 Approx Sq Ft



Merton Road, SW18

Approximate Gross Internal Area 58 sq.m / 624 sq. ft



Ground Floor

Floor Plan produced for WINKWORTH by Mays Floorplans © . Tel 020 3397 4594

Illustration for identification purposes only, not to scale

All measurements are maximum, and include wardrobes and window bays where applicable

This floorplan is for illustration purposes only and is not to scale. The position and size of doors, windows, appliances and other features are approximate.

Deposit: 5 weeks' rent

Holding Deposit: 1 week's rent

Council Tax Band: Wandsworth

Where no figures are shown, we have been unable to ascertain the information. All figures that are shown were correct at the time of printing.

Southfields | 020 8877 1000 | southfields@winkworth.co.uk
241 Wimbledon Park Road, Southfields, London, SW18 5RJ

Winkworth

for every step...

[winkworth.co.uk](https://www.winkworth.co.uk)

Winkworth wishes to inform prospective buyers and tenants that these particulars are a guide and act as information only. All our details are given in good faith and believed to be correct at the time of printing but they don't form part of an offer or contract. No Winkworth employee has authority to make or give any representation or warranty in relation to this property. All fixtures and fittings, whether fitted or not are deemed removable by the vendor unless stated otherwise and room sizes are measured between internal wall surfaces, including furnishings.