



BURROW ROAD, EAST DULWICH, LONDON, SE22  
**£650,000 FREEHOLD**

# TWO-BEDROOM TERRACED HOUSE IN THE HEART OF EAST DULWICH

Dulwich | 020 8299 2722 | [dulwich@winkworth.co.uk](mailto:dulwich@winkworth.co.uk)

Tenure Freehold | Council Tax Band D – London Borough of Southwark

**Winkworth**

[winkworth.co.uk](http://winkworth.co.uk)

See things differently



## DESCRIPTION:

This delightful two-bedroom terraced house is located on a quiet residential road in the heart of East Dulwich, combining comfort and convenience. Ideal for first-time buyers, couples, or small families, the property offers a bright living room and a well-appointed open-plan kitchen/diner, perfect for entertaining. Upstairs, there are two well-proportioned bedrooms and a modern family bathroom.

The south-facing private garden provides a lovely space for outdoor dining, while additional benefits include off-street parking and potential for a loft conversion or garden extension (STPP).

Superbly located, the property is just a few minutes' walk from East Dulwich Station and within walking distance of Denmark Hill Station. Nearby amenities include a large Sainsbury's, East Dulwich Library, boutique shops, and cafes, as well as highly regarded schools. This home is an excellent opportunity in a vibrant and well-connected area.

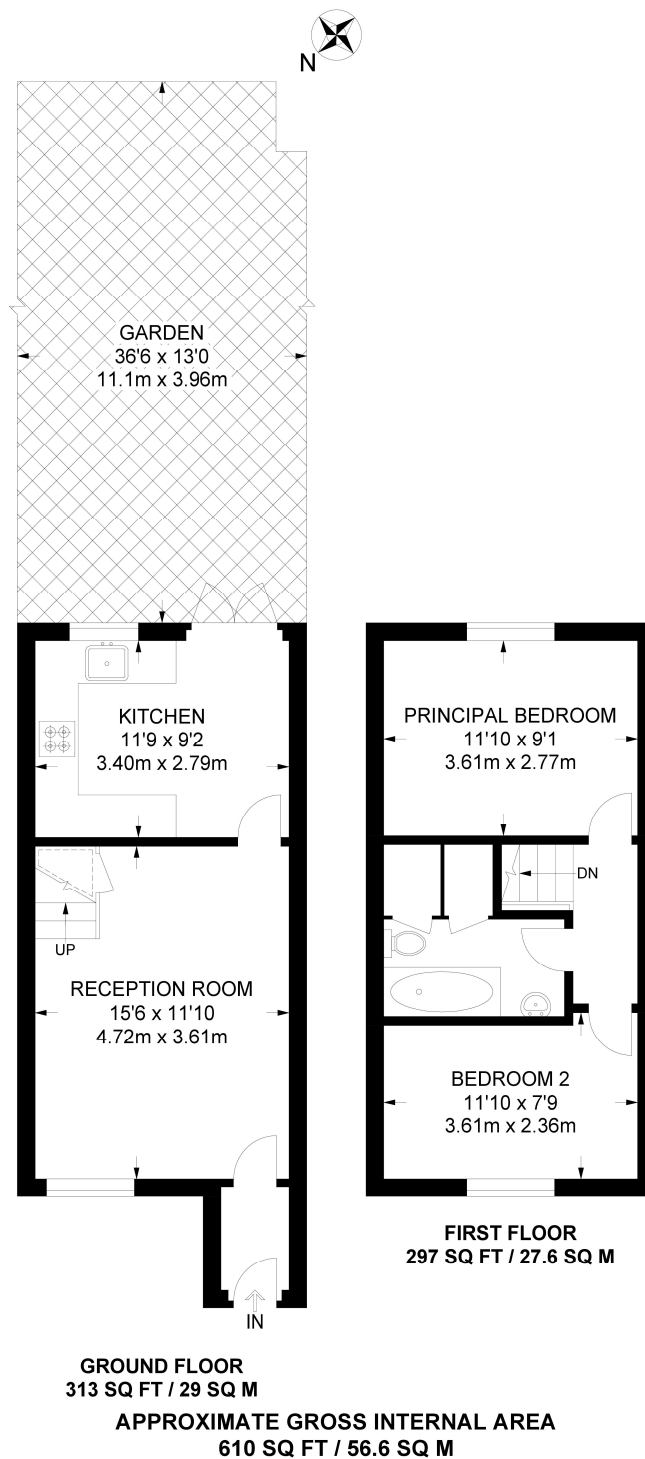
## AT A GLANCE

- Two well-proportioned bedrooms.
- Open-plan kitchen/diner, ideal for hosting and family meals.
- South-facing private garden, perfect for outdoor enjoyment.
- Off-street parking and potential for a loft conversion and garden extension (STPP).
- Excellent transport links, with East Dulwich and Denmark Hill stations nearby.
- Conveniently located near amenities such as a large Sainsbury's, East Dulwich Library, and local shops and cafes.

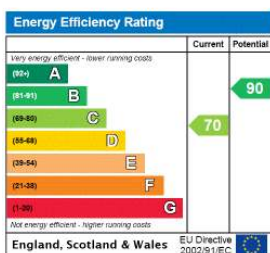








This floorplan is for illustration purposes only and is not to scale. The position and size of doors, windows, appliances and other features are approximate.



Dulwich | 020 8299 2722 | [dulwich@winkworth.co.uk](mailto:dulwich@winkworth.co.uk)

**Winkworth**

[winkworth.co.uk](http://winkworth.co.uk)

See things differently

Winkworth wishes to inform prospective buyers and tenants that these particulars are a guide and act as information only. All our details are given in good faith and believed to be correct at the time of printing but they don't form part of an offer or contract. No Winkworth employee has authority to make or give any representation or warranty in relation to this property. All fixtures and fittings, whether fitted or not are deemed removable by the vendor unless stated otherwise and room sizes are measured between internal wall surfaces, including furnishings.