

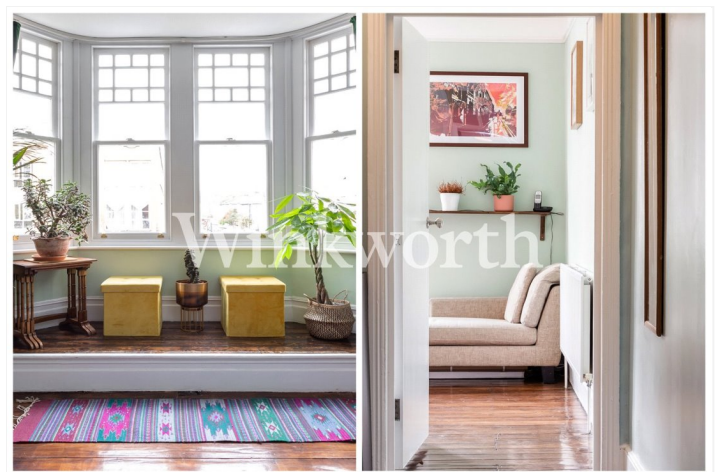


GRAND PARADE, LONDON, N4
£450,000 LEASEHOLD
UNDER OFFER AT £460,000 AT THE MOMENT

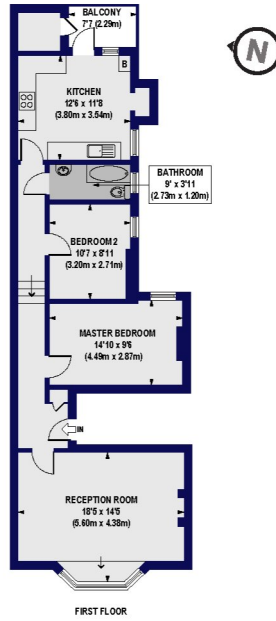
Harringay | 020 8800 5151 | harringay@winkworth.co.uk



DESCRIPTION:



Grand Parade, Green Lanes, N4
 Approx. Gross Internal Floor Area 796 sq. ft / 73.95 sq. m



All measurements of walls, doors, windows, fittings and appliances, throughout the specification, are in metres. All details, notes and dimensions are the property or representation of the seller, their agent or of a licensee. Any measurements shown must be taken in accordance with the way as to the contract of the information contained in these plans. This plan is for illustrative purposes only and should be used in conjunction with any prospective purchases.



This floorplan is for illustration purposes only and is not to scale. The position and size of doors, windows, appliances and other features are approximate.

Energy Efficiency Rating		Current	Potential
Very energy efficient - lower running costs			
(92)	A		
(81-91)	B		
(69-80)	C	71	77
(55-68)	D		
(39-54)	E		
(21-58)	F		
(1-20)	G		
Not energy efficient - higher running costs			
England, Scotland & Wales		EU Directive 2002/91/EC	