



76 QUEENS ROAD

NEWBURY BERKSHIRE RG14 7PA

A superbly presented 1920's semi-detached house within walking distance of the town centre and railway station.

The property has been updated by the present owner, including improvements to electrical wiring and fuse board, to the heating, redecoration, a new bathroom and the fireplace opened in the sitting room.

The accommodation is bright and airy and has reception hall, a south facing sitting room with a bay window and open fire, a dining room with French doors to the garden, kitchen and cloakroom.

On the first floor there are three generous bedrooms and a large family bathroom.

The property is completed by a large rear garden and off road parking.



Winkworth

AT A GLANCE

- 1172 Square feet/ 108 square metres
- Three double bedrooms
- Bathroom
- Sitting room
- Dining room
- Kitchen
- Cloakroom
- Off road parking
- Large garden

UTILITIES

Mains water, electricity, drainage and gas. Gas fired central heating.
West Berkshire Council Band C
EPC D

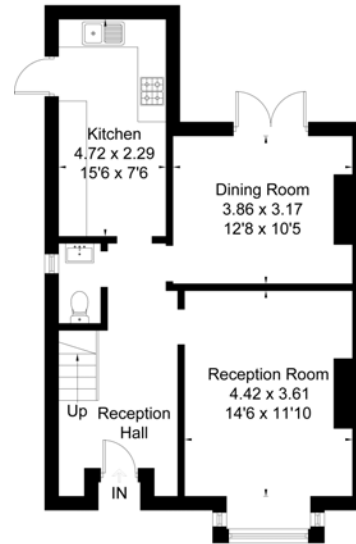
SITUATION

The property is in Queens Road, a road of period properties on the east side of Newbury. Both the station and town centre are within easy walking distance.

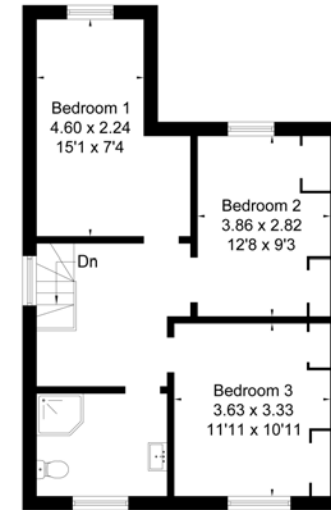
DIRECTIONS

For sat nav RG14 7PA.
There is a board at the property.

Approximate IPMS2 Floor Area = 108.9 sq m / 1172 sq ft



Ground Floor



First Floor



Newbury Office

43 Northbrook Street, Newbury, Berkshire RG14 1DT
01635 552552 | newbury@winkworth.co.uk

winkworth.co.uk/newbury

Winkworth

See things differently.