



Hartshill Court

104 Golf Links Road, Ferndown BH22 8DA

Guide Price £275,000

Winkworth



Guide Price £275,000
SHARE OF FREEHOLD

This extremely spacious two double bedroom, ground floor apartment has direct access onto a private patio and located approx 75 metres from Ferndown Championship Golf Course.

Whilst the property has been well maintained throughout it would be an ideal purchase for those wanting to put their own stamp on their new home.

Further benefits include a share of the freehold, vacant possession with no onward chain, a garage and off road parking.

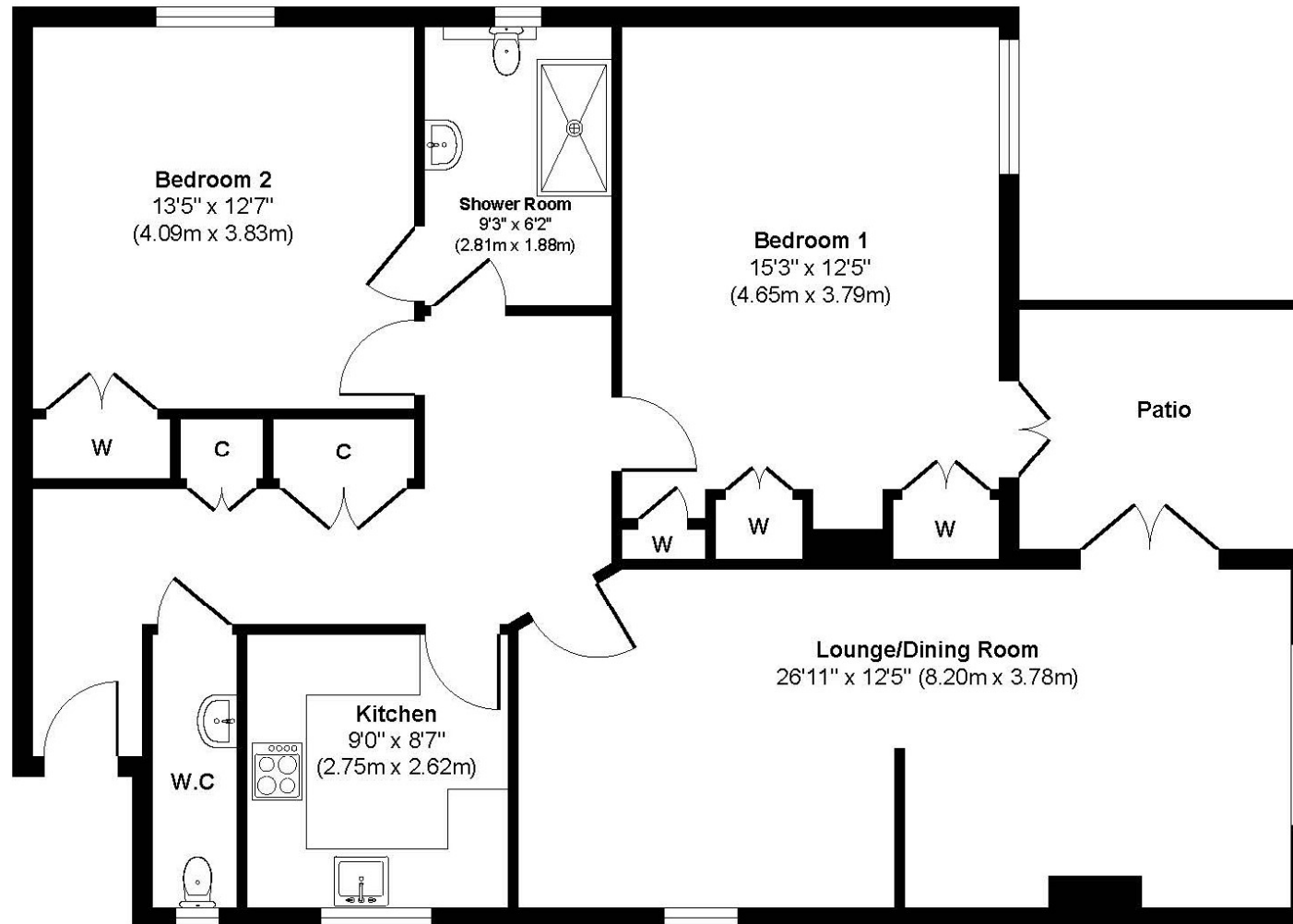
Well Maintained Throughout
Private Patio
Two Double Bedrooms
Ground Floor Apartment
Share Of Freehold
Secluded Communal Gardens
No Onward Chain
Off Road Parking & Garage
No Pets Allowed
Service Charge £2500pa

EPC TBC | Council Tax Band D

01202 434365
ferndown@winkworth.co.uk



Hartshill



Approx. Gross Internal Floor Area 1013 sq. ft / 94.14 sq. m

Illustration for identification purposes only, measurements approximate and not to scale.



LOCATION

Positioned on Golf Links Road, which is a very desirable residential location, just moments from Ferndown championship Golf Course. The town centre is within a short walk and has a range of shops, cafes and amenities including an M&S Foodhall. There are bus routes nearby giving you easy access to Bournemouth, Poole and Wimborne, all of which have an excellent range of shops, restaurants and leisure facilities. Award winning beaches are just twenty minutes away and the A31 provides quick access to the New Forest, Southampton, London and beyond.

Winkworth Ferndown

406 Ringwood Road, Ferndown, Dorset, BH22 9AU

01202 434365 | ferndown@winkworth.co.uk

winkworth.co.uk/ferndown

Winkworth