



Church Vale, SE23

£175,000 *Leasehold*



Winkworth presents this cosy one bedroom apartment located in the desirable Forest Hill area which is close to many transportation links and local amenities.



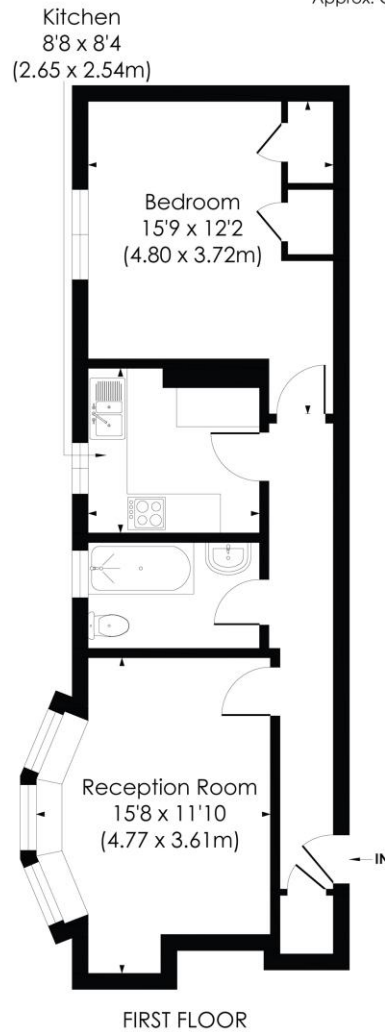
Forest Hill

| foresthill@winkworth.co.uk

CHURCH VALE, SE23

Approx. Gross Internal Floor Area

556 Sq. ft/51.64 Sq. m



© Pixangle Property Marketing Ltd. info@pixangle.com Tel: 0208 870 2118

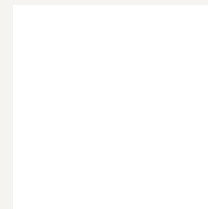
pixangle
PROPERTY MARKETING

This floor plan has been prepared for the purpose of illustration only in accordance with the latest RICS code of measuring practice and is not to scale. All measurements and areas are approximate and whilst every effort has been made to ensure the accuracy of the plan contained here, no responsibility is taken for any error, omission or misstatement.

MATERIAL INFO

For more information, scan the QR code or visit the link below

Tenure: Leasehold



<https://www.winkworth.co.uk/sale/property/FHL250087>

Where no figures are shown, we have been unable to ascertain the information. All figures that are shown were correct at the time of printing.

Forest Hill

| foresthill@winkworth.co.uk