



VOYSEY CLOSE, FINCHLEY, LONDON, N3
£740,000 SHARE OF FREEHOLD

**A TWO BEDROOM, TWO RECEPTION, TWO
 BATHROOM, PURPOSE BUILT FLAT, SITUATED
 WITHIN A MODERN GATED DEVELOPMENT.**

Finchley | 020 8349 3388 | finchley@winkworth.co.uk

Winkworth

for every step...

winkworth.co.uk



DESCRIPTION:

We are pleased to offer this spacious and elegant apartment, set in a very desirable development, off Hendon Lane. Voysey Close is a well maintained block, and comes with a lift in block, communal gardens, and parking via security gates.

The property is an excellent size, being in excess of 1250 sq. ft, and comprised of a large reception area, kitchen / dining area, two sizeable bedrooms with en-suite to the primary bedroom, and a further bathroom with access from the second bedroom and hallway.

The property is being offered on a chain free basis and an internal viewing is highly recommended.

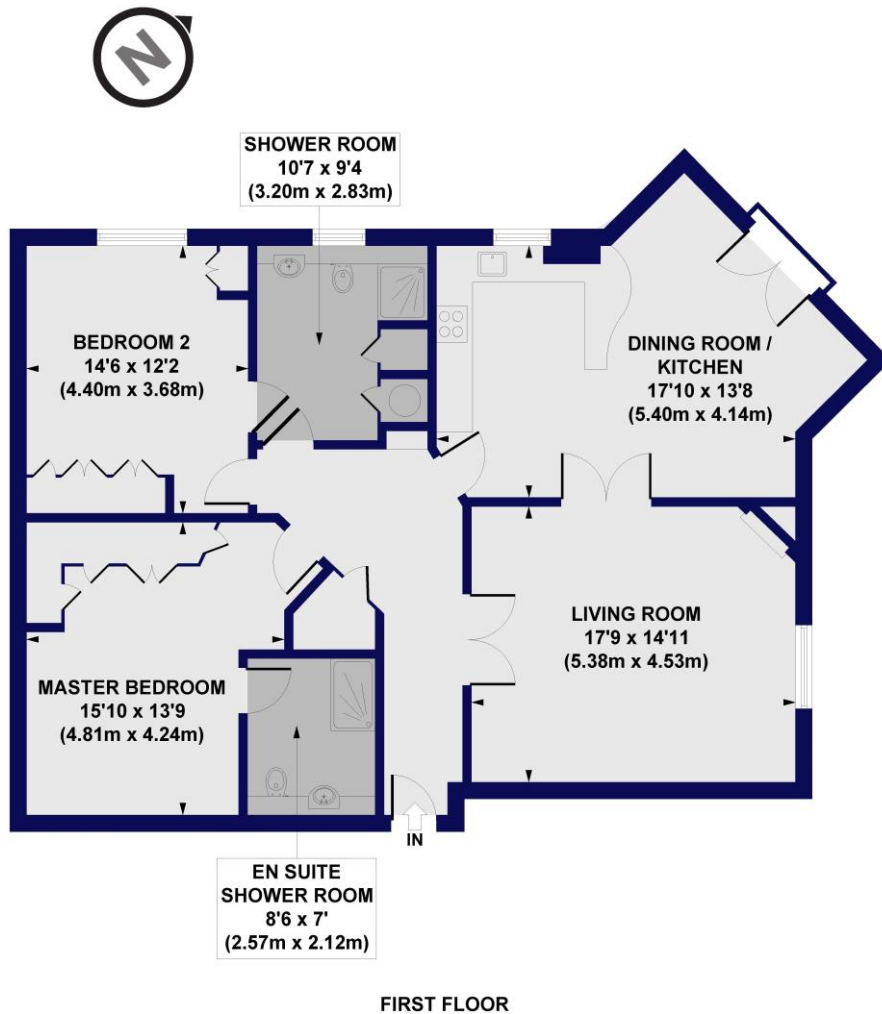
AT A GLANCE

- Purpose built block
- Set behind security gates
- First floor
- Lift in block
- In excess of 1250 sq ft of living space
- Large reception room
- Kitchen / dining area
- Two double bedrooms & Two bathrooms
- Parking
- Chain free





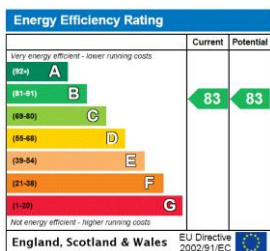
Voysey Close, N3
Approx. Gross Internal Floor Area 1282 sq. ft / 119.09 sq. m



All measurements of walls, doors, windows, fittings and appliances, including their size and location, are shown as standard sizes and do not constitute any warranty or representation by the seller, their agent or CP Creative. Any intending purchaser must satisfy himself by inspection or otherwise as to the correctness of the information contained in these plans. This plan is for illustrative purposes only and should be used as such by any prospective purchasers.

Winkworth

This floorplan is for illustration purposes only and is not to scale. The position and size of doors, windows, appliances and other features are approximate.



Tenure: Share of Freehold

Term: 126 year and 2 months

Service Charge: £5400 per annum

Council Tax Band: G

Where no figures are shown, we have been unable to ascertain the information. All figures that are shown were correct at the time of printing.

Winkworth

Finchley | 020 8349 3388 | finchley@winkworth.co.uk

winkworth.co.uk

for every step...

Winkworth wishes to inform prospective buyers and tenants that these particulars are a guide and act as information only. All our details are given in good faith and believed to be correct at the time of printing but they don't form part of an offer or contract. No Winkworth employee has authority to make or give any representation or warranty in relation to this property. All fixtures and fittings, whether fitted or not are deemed removable by the vendor unless stated otherwise and room sizes are measured between internal wall surfaces, including furnishings.