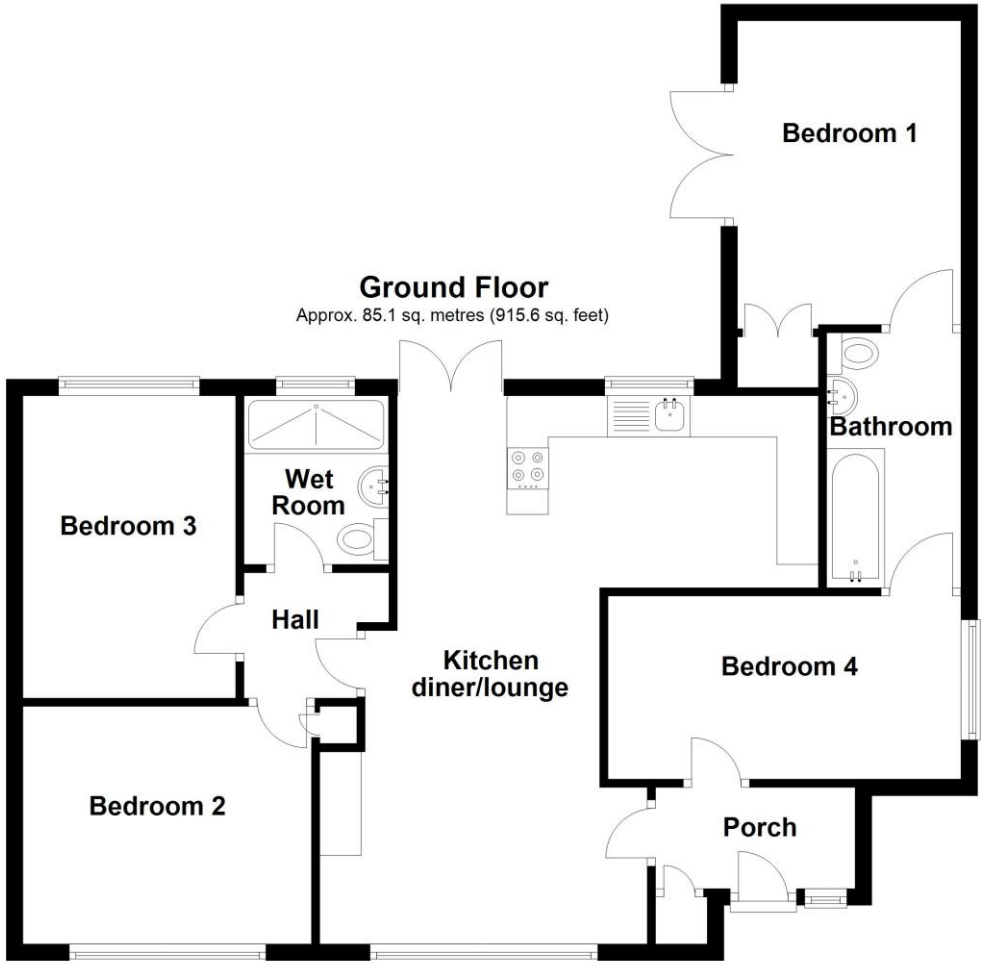


Score	Energy rating	Current	Potential
92+	A		
81-91	B		84 B
69-80	C		
55-68	D	63 D	
39-54	E		
21-38	F		
1-20	G		



Total area: approx. 85.1 sq. metres (915.6 sq. feet)



5 Meadowfield, Sleaford, Lincolnshire, NG34 7AZ

£250,000 Freehold

We are delighted to offer for sale this Three/Four Bedroom Bungalow situated on Meadow field in Sleaford. The property is ideally located in a cul-de-sac position with a pathway at the bottom of the road providing a shortcut to local amenities.

Recently Extended Home | Three/Four Bedrooms | Flexible Accommodation | Two Stunning Bathrooms | Modern Fitted Kitchen | Beautiful Rear Garden | Large Patio Area | Off Street Parking | South Facing Garden | Close to amenities



ACCOMMODATION

Entrance Hall

Open plan Kitchen/Dining/Living Room - 26'8" x 21'1" (8.13m x 6.43m)

Bedroom 1 - 16'5" x 9'10" (5m x 3m)

Jack & Jill En-suite - 12'4" x 5'8" (3.76m x 1.73m)

Bedroom 2 - 16'6" x 9'5" (5.03m x 2.87m)

Bedroom 3 - 15'2" x 10'2" (4.62m x 3.1m)

Bedroom 4 - 13'6" x 11'4" (4.11m x 3.45m)

Wet Room - 10'1" x 6'9" (3.07m x 2.06m)

LOCAL AUTHORITY

North Kesteven District Council

TENURE

Freehold

COUNCIL TAX BAND

B

DESCRIPTION

The property has been recently extended and renovated by the current owners. There is now Four Bedrooms, or Three with a Separate sitting Room, Jack & Jill En-Suite, Wet Room and a lovely open plan Kitchen/Dining/Living Room with French doors opening out onto the garden.

The rear garden is beautifully presented with a large paved patio area, canopy, edged borders, multiple established plants, trees and shrubs, and best of all, its SOUTH FACING!

This is a beautiful home and an early viewing is highly recommended to avoid disappointment.

