



BOREHAM HOLT, BOREHAMWOOD, HERTFORDSHIRE, WD6

**£315,000 LEASEHOLD**

**A IMMACULATLY WELL-KEPT TWO BEDROOM  
FIRST FLOOR FLAT.**

**Borehamwood** | 020 8953 8899 | [borehamwood@winkworth.co.uk](mailto:borehamwood@winkworth.co.uk)





### DESCRIPTION:

Nestled in the heart of a vibrant neighbourhood, this exquisite first-floor apartment offers a luxurious and convenient lifestyle. Boasting two spacious bedrooms, this property is ideal for young professionals or a small family seeking a modern urban retreat. The apartment features a sleek and contemporary design, with an abundance of natural light flooding in through large windows. Residents can enjoy the serene communal gardens and convenient residents' parking facilities. With easy access to local amenities, including shops, restaurants, and transport links, this property offers the perfect balance of tranquillity and urban living. The lift access to the upper floor ensures convenience for all residents. Don't miss the opportunity to make this stunning apartment your new home. Contact us today to arrange a viewing.

### AT A GLANCE

- 2 Bedrooms
- Chain Free
- 726 Square Feet
- Walking Distance To Station
- 936 Year Lease







Approximate Gross Internal Area = 67.5 sq m / 726 sq ft

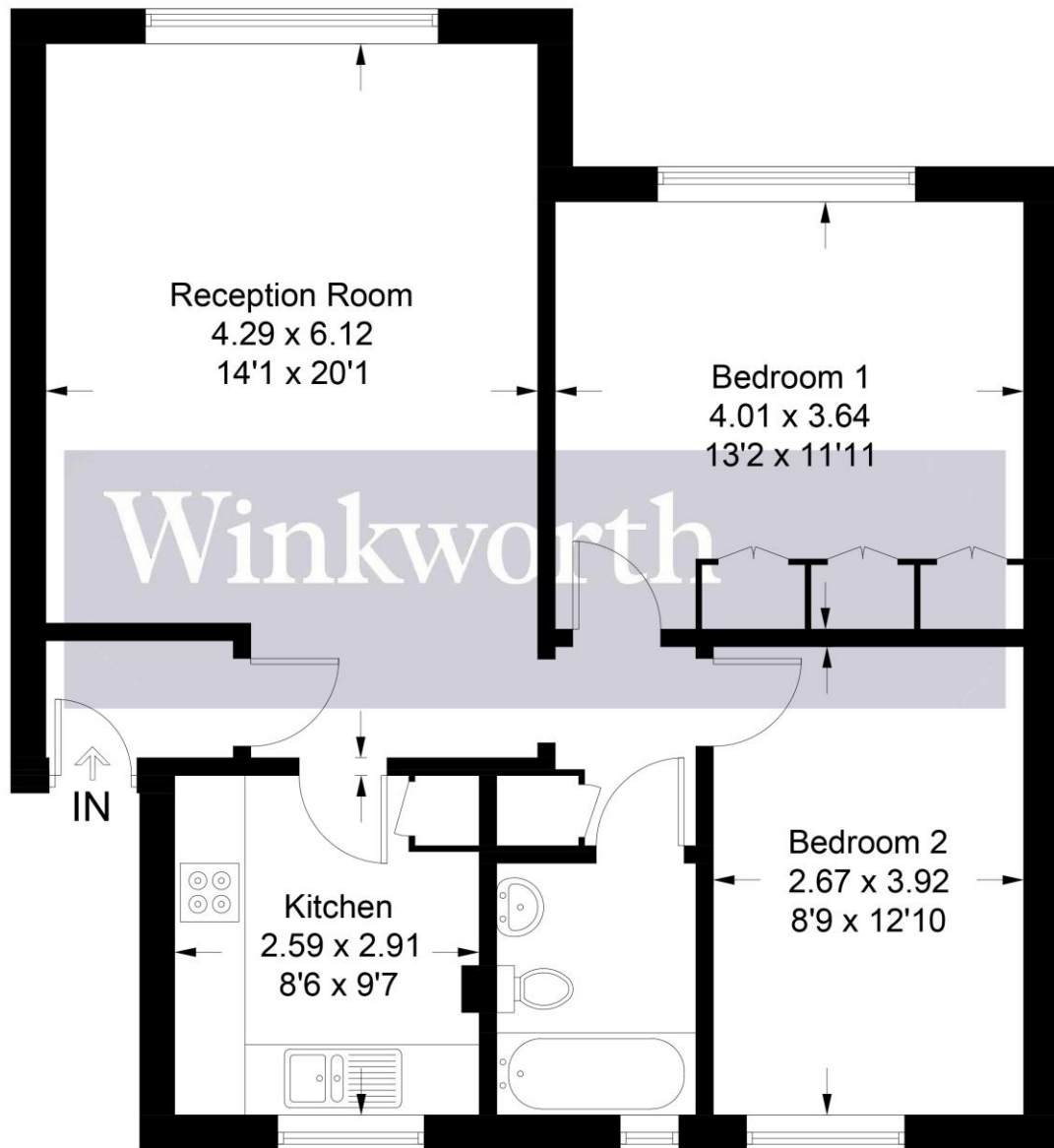
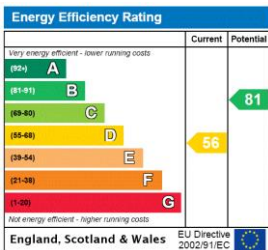


Illustration for identification purposes only, measurements are approximate, not to scale. Winkworth © 2024 (ID1149860)

This floorplan is for illustration purposes only and is not to scale. The position and size of doors, windows, appliances and other features are approximate.



**Tenure:** Leasehold

**Term:** 936 year and 4 months

**Service Charge:** £1700 per annum

**Ground Rent:** £ 0 Annually (subject to increase)

**Council Tax Band:** C

Where no figures are shown, we have been unable to ascertain the information. All figures that are shown were correct at the time of printing.