



Thorpebank Road, Shepherd's Bush, W12

£880,000 Freehold

A delightful example of a four bedroom Edwardian cottage, on the ever popular Thorpebank Road.

Reception Room | Kitchen | 4 Bedrooms | Bathroom | En Suite Bathroom | Garden | 1072 Sq Ft /
100 Sq M | Council Tax Band E | EPC Rating Band D

Winkworth



LOCATION

Thorpebank Road forms part of the ever popular 'Groves' area of Shepherd's Bush. Within easy reach of the area's diverse array of shops and restaurants, there are also several pubs and coffee shops close by. The outside spaces of both Wormholt and Ravenscourt Parks are just a short distance away, whilst superb transport links give easy access both in to and out of Central London. A number of well regarded schools are also close by.

DESCRIPTION

Offered in good order throughout, this charming Edwardian house benefits from accommodation comprising double reception room with open plan kitchen on the ground floor, the first floor two double bedrooms, bathroom and study/fourth bedroom; the top floor offers a further bedroom with juliette balcony and en suite bathroom. The house further benefits from a patio garden and excellent storage, including in to the eaves.





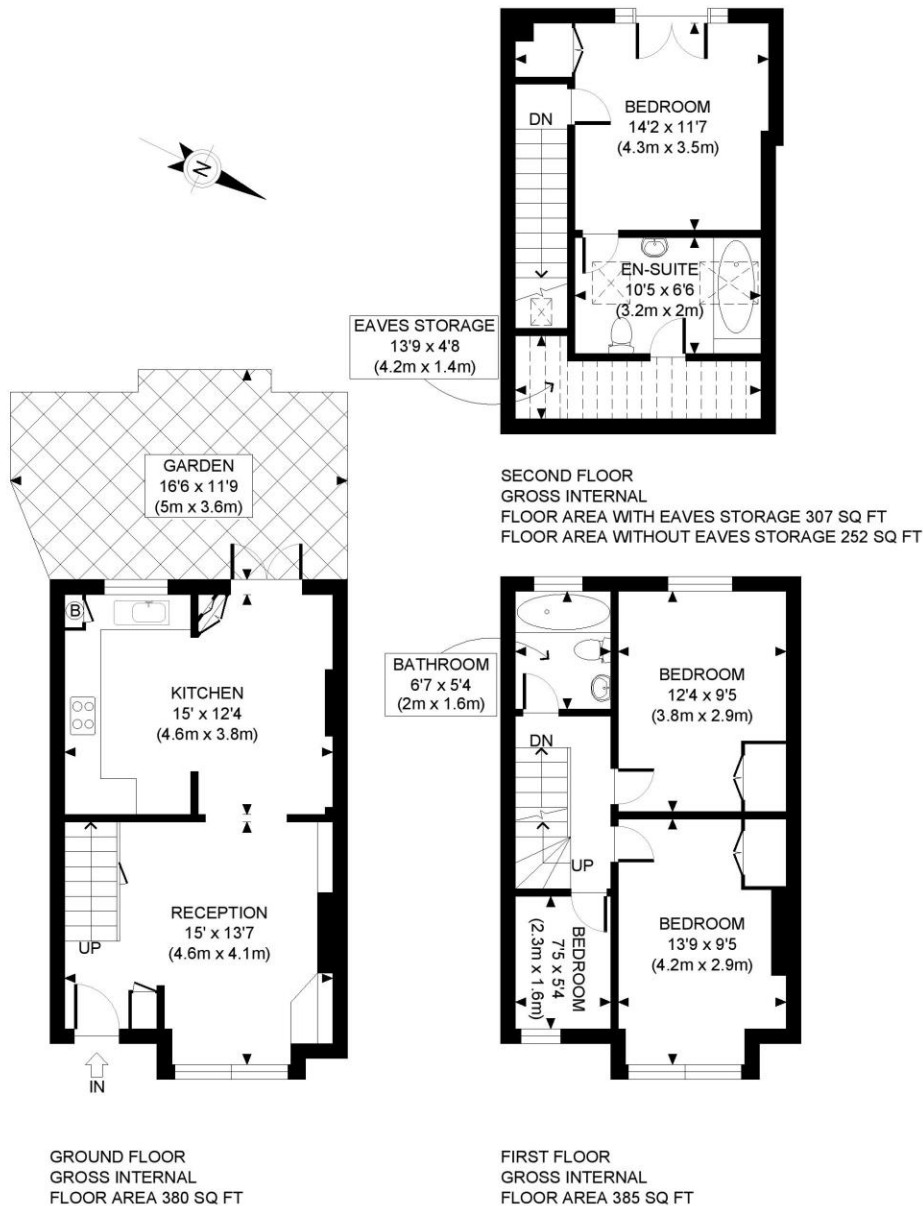
LOCAL AUTHORITY
Hammersmith & Fulham

TENURE
Freehold.

PRICE: £880,000 Freehold



Energy Efficiency Rating		
	Current	Potential
Very energy efficient - lower running costs		
(92+) A		
(81-91) B		83
(69-80) C		
(55-68) D	65	
(39-54) E		
(21-38) F		
(1-20) G		
Not energy efficient - higher running costs		
England, Scotland & Wales	EU Directive 2002/91/EC	



PROPERTY PHOTO PLANS.CO.UK
ONE STOP SHOP FOR PROPERTY MARKETING

This plan is for illustrative purposes only and should be used as such by any prospective client. Whilst every attempt has been made to ensure the accuracy of the Floor Plan contained here, measurements of the doors, windows, rooms and any other items are approximate and no responsibility is taken for any errors, omissions, or misstatement. The services, systems and appliances shown have not been tested and no guarantee as to the operability or efficiency can be given.

The displayed square footage is taken from the floor plans with measurements created using the Royal Institute of Chartered Surveyors' Code of Practice for Measuring. These measurements are approximate and included for illustrative purposes only. Winkworth does not make any representation as to the accuracy of these measurements and you should seek to verify them for yourself. Winkworth accept no liability for any loss you may suffer if you rely on these measurements.

Shepherds Bush | 020 8735 3266 | shepherdsbush@winkworth.co.uk



for every step...

Under the Property Misdescriptions Act 1991, these Particulars are a guide and act as information only. All details are given in good faith and are believed to be correct at time of printing. Winkworth give no representation as to their accuracy and potential purchasers or tenants must satisfy themselves by inspection or otherwise as to their correctness. No employee of Winkworth has authority to make or give any representation or warranty in relation to this property.