



- FOUR BEDROOM SPACIOUS HOUSE
- EXTENDED TO THE SIDE AND REAR
- VAST GARDEN & PATIO AREA
- OWN DRIVE WITH CAR PARKING FOR 2 CARS
- WITHIN CATCHMENT OF HIGHLY RATED SCHOOLS
- SHOPPING AMENITIES & TRANSPORT IN CLOSE VICINITY

LANGLAND CRESCENT, HA7  
**£720,000 FREEHOLD**

## FOUR BEDROOM SEMI DETACHED HOUSE FOR SALE

Kingsbury | 020 8204 0000 | [kingsbury@winkworth.co.uk](mailto:kingsbury@winkworth.co.uk)

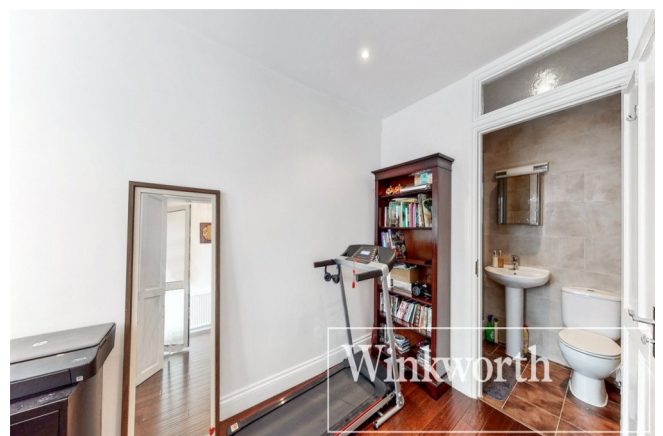
**Winkworth**

for every step...

[winkworth.co.uk](http://winkworth.co.uk)

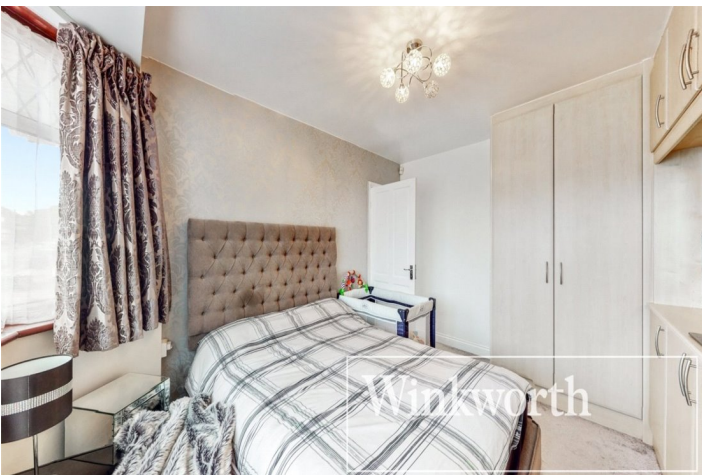


**DESCRIPTION:** This stunning 4 bedroom 3 bathroom semi-detached house is immaculately presented throughout. Offering off street parking for 2 cars, a large through lounge with a secured porch entrance and wooden floors leading to a modern kitchen overlooking the well maintained garden and spacious patio area for socialising. Spread over 2 floors, the property is beautifully presented and offers an adaptable living space for the most demanding of families. The garage has been converted into a double bedroom which leads into an ensuite as well as an exclusive dining area. Within the rear extension is, another shower room providing convenience for an extended family. The first floor comprises of 2 spacious double bedrooms with built in wardrobes and a single bedroom. There is also a large family bathroom. This beautifully located property can offer the prospect of an ideal home for a growing family.



**Winkworth**

for every step...

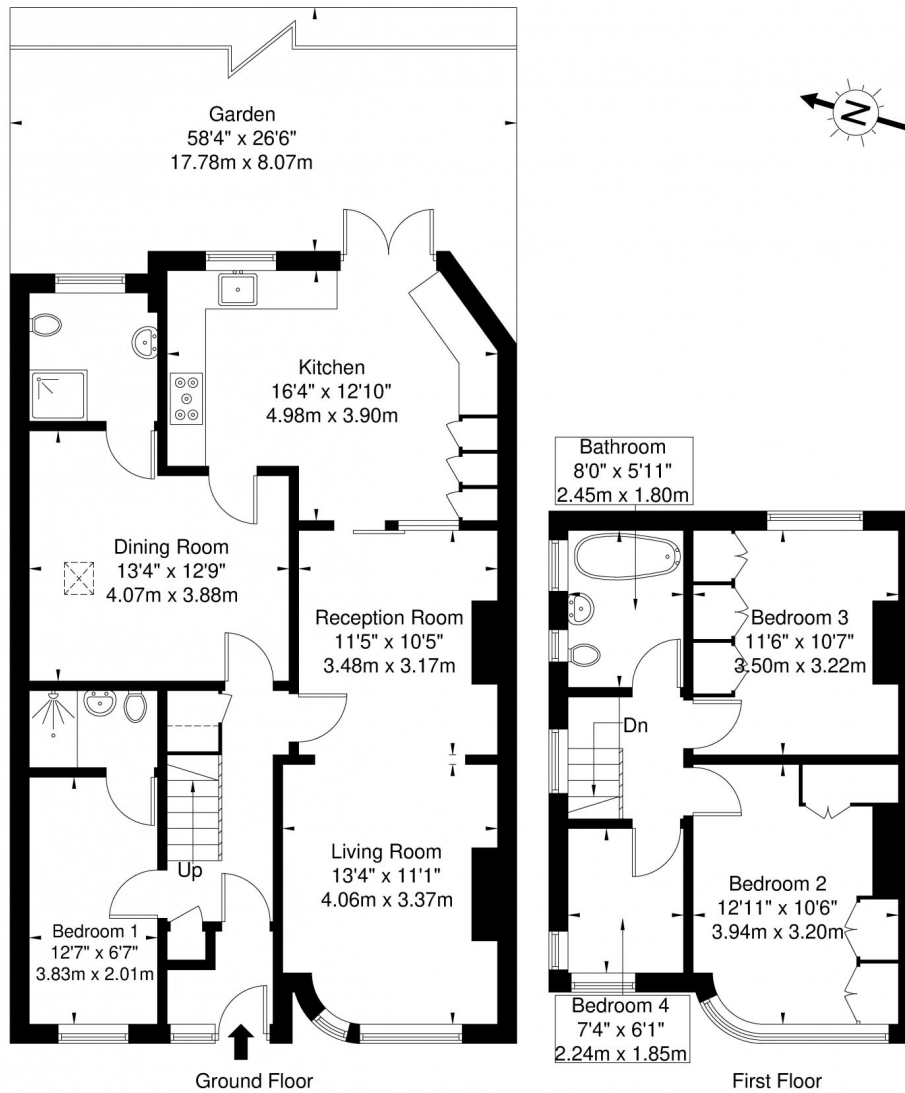


**Winkworth**

for every step...

# Langland Crescent, HA7 1NH

Approx. Gross Internal Area = 133.6 sq m / 1438 sq ft

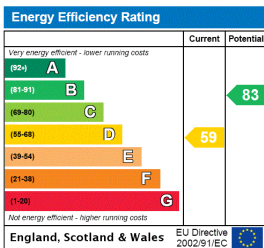


Ref

Copyright **BLEU PLAN**

Disclaimer : Floor plan measurements are approximate and are for illustrative purposes only. While we do not doubt the floor plan accuracy and completeness, you or your advisers should conduct a careful, independent investigation of the property in respect of monetary valuation.

This floorplan is for illustration purposes only and is not to scale. The position and size of doors, windows, appliances and other features are approximate.



Kingsbury | 020 8204 0000 | kingsbury@winkworth.co.uk



for every step...

winkworth.co.uk

Winkworth wishes to inform prospective buyers and tenants that these particulars are a guide and act as information only. All our details are given in good faith and believed to be correct at the time of printing but they don't form part of an offer or contract. No Winkworth employee has authority to make or give any representation or warranty in relation to this property. All fixtures and fittings, whether fitted or not are deemed removable by the vendor unless stated otherwise and room sizes are measured between internal wall surfaces, including furnishings.