



ST STEPHENS AVENUE, LONDON, W12

**£1,420,000 FREEHOLD**

**A BEAUTIFUL THREE STOREY VICTORIAN TERRACE HOUSE WITH AN EXCELLENT BALANCE OF LIVING SPACE. THIS HOME HAS A WARM AND MODERN FAMILY FEEL THAT BALANCES PERIOD CHARM WITH MODERN LIVING PERFECTLY**

Shepherds Bush | 020 8735 3266 | [shepherdsbush@winkworth.co.uk](mailto:shepherdsbush@winkworth.co.uk)

A member of  **OnTheMarket**.com

[winkworth.co.uk/shepherds-bush](https://www.winkworth.co.uk/shepherds-bush)

**Winkworth**

**for every step...**





## DESCRIPTION:

A beautiful three storey Victorian Terrace house with an excellent balance of living space. This home has a warm and modern family feel that balances period charm with modern living perfectly. Accommodation comprises four double bedrooms, two bathrooms, a utility space, large double reception rooms and stylish kitchen with dining space which leads to a well-appointed West facing garden. Presented in good decorative order with potential to convert the loft, (subject to the necessary consents). The house boasts many traits of the period, including tall ceilings and large sash windows that flood the property with natural light. This is an excellent home and interest is sure to be keen.

## LOCATION:

St. Stephens Avenue is a quiet residential street, south of Uxbridge Road, providing easy access to numerous tube stations, including Shepherds Bush Market and Shepherds Bush (Hammersmith and City, Circle, Central and London Overground).

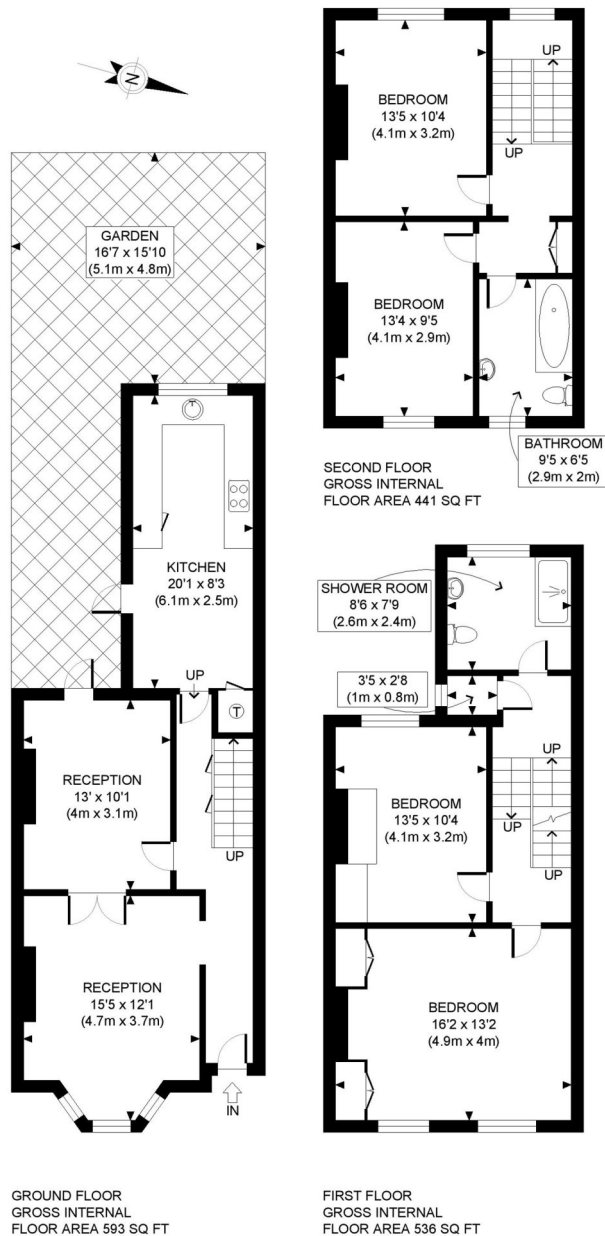
There is a range of excellent local schools nearby including St Stephen's Primary School. A vast selection of shops bars and restaurants can be found along Uxbridge Road and at Westfield Shopping centre.







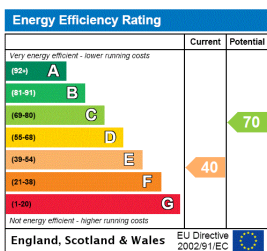




APPROX. GROSS INTERNAL FLOOR AREA: 1570 SQ FT/ 146 SQM

**PROPERTY PHOTO PLANS**.co.uk  
ONE STOP SHOP FOR PROPERTY MARKETING

Whilst every attempt has been made to ensure the accuracy of the floor plan contained here, measurements of the doors, windows, rooms and any other items are approximate and no responsibility is taken for any errors, omissions, or miss-statement. This plan is for illustrative purposes only and should be used as such by any prospective client. The services, systems and appliances shown have not been tested and no guarantee as to the operability or efficiency can be given.



Shepherds Bush | 020 8735 3266 | shepherdsbush@winkworth.co.uk

**Winkworth**

[winkworth.co.uk/shepherds-bush](http://winkworth.co.uk/shepherds-bush)

for every step...

Winkworth wishes to inform prospective buyers and tenants that these particulars are a guide and act as information only. All our details are given in good faith and believed to be correct at the time of printing but they don't form part of an offer or contract. No Winkworth employee has authority to make or give any representation or warranty in relation to this property. All fixtures and fittings, whether fitted or not are deemed removable by the vendor unless stated otherwise and room sizes are measured between internal wall surfaces, including furnishings.