



- THREE SPACIOUS BEDROOMS
- PARKING FOR THREE CARS
- SCOPE FOR DEVELOPMENT (STPP)
- WALKING DISTANCE TO KINGSBURY STATION ON JUBILEE LINE
- CLOSE TO PLACES OF WORSHIP
- CATCHMENT OF MOUNT STEWART SCHOOL & CLAREMONT HIGH SCHOOL

LINDSAY DRIVE, MIDDLESEX, HA3  
**£740,000 FREEHOLD**

## 3 BEDROOM SEMI DETACHED HOUSE WITH GARAGE

Kingsbury | 020 8204 0000 | [kingsbury@winkworth.co.uk](mailto:kingsbury@winkworth.co.uk)





**DESCRIPTION:** Winkworth are pleased to bring to the market, this three bedroom much loved family home. The property has gone through some development over the years and now boasts 3 reception rooms, a large kitchen leading through to a near 3ft conservatory, as well as a downstairs WC.

The first floor offers 3 spacious bedrooms and a neutral family bathroom. The 18 x 8 ft garage allows immense scope for development for a double storey side extension (STPP). The rear garden is beautifully laid to lawn and allows scope for development to the rear (STPP). Situated on one of Kenton's premier roads "Lindsay Drive", being within 0.5 mile radius of Kingsbury Station, shops, schools and places of worship. The property is also within the catchment of Mount Stewart Primary School, Claremont High and JFS School.

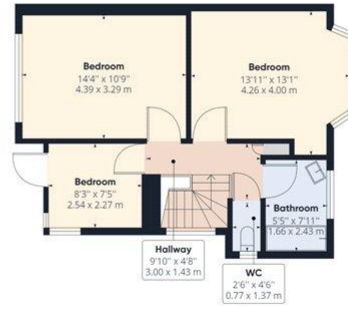






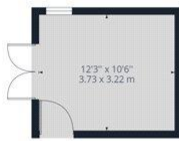


Ground Floor Building 1



Floor 1 Building 1

**Approximate total area<sup>(1)</sup>**  
 1640.72 ft<sup>2</sup>  
 152.43 m<sup>2</sup>



Ground Floor Building 2

(1) Excluding balconies and terraces

While every attempt has been made to ensure accuracy, all measurements are approximate, not to scale. This floor plan is for illustrative purposes only.

GIRAFFE360

This floorplan is for illustration purposes only and is not to scale. The position and size of doors, windows, appliances and other features are approximate.

