



South Vale, London, SE19

£1,350,000 *Freehold*

5  2  3 

Winkworth is pleased to offer to the market this incredibly stunning 5-bedroom property for sale moments from the Triangle.

KEY FEATURES

- Freehold
- 5 large bedrooms
- 3 bathrooms
- Lovely private garden
- Underfloor heating
- Gorgeous oak flooring throughout



Crystal Palace

02038693222 | crystalpalace@winkworth.co.uk

Winkworth

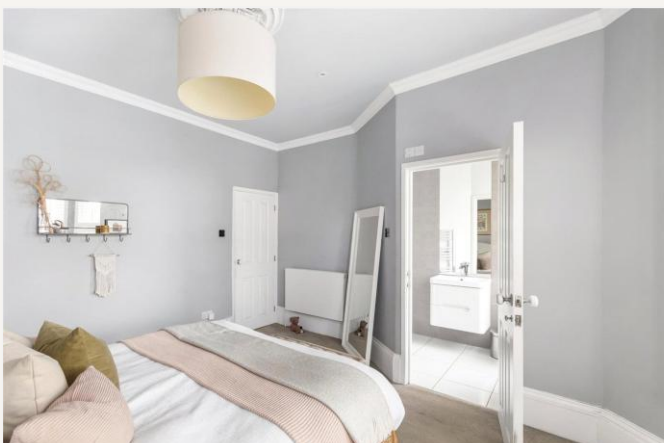
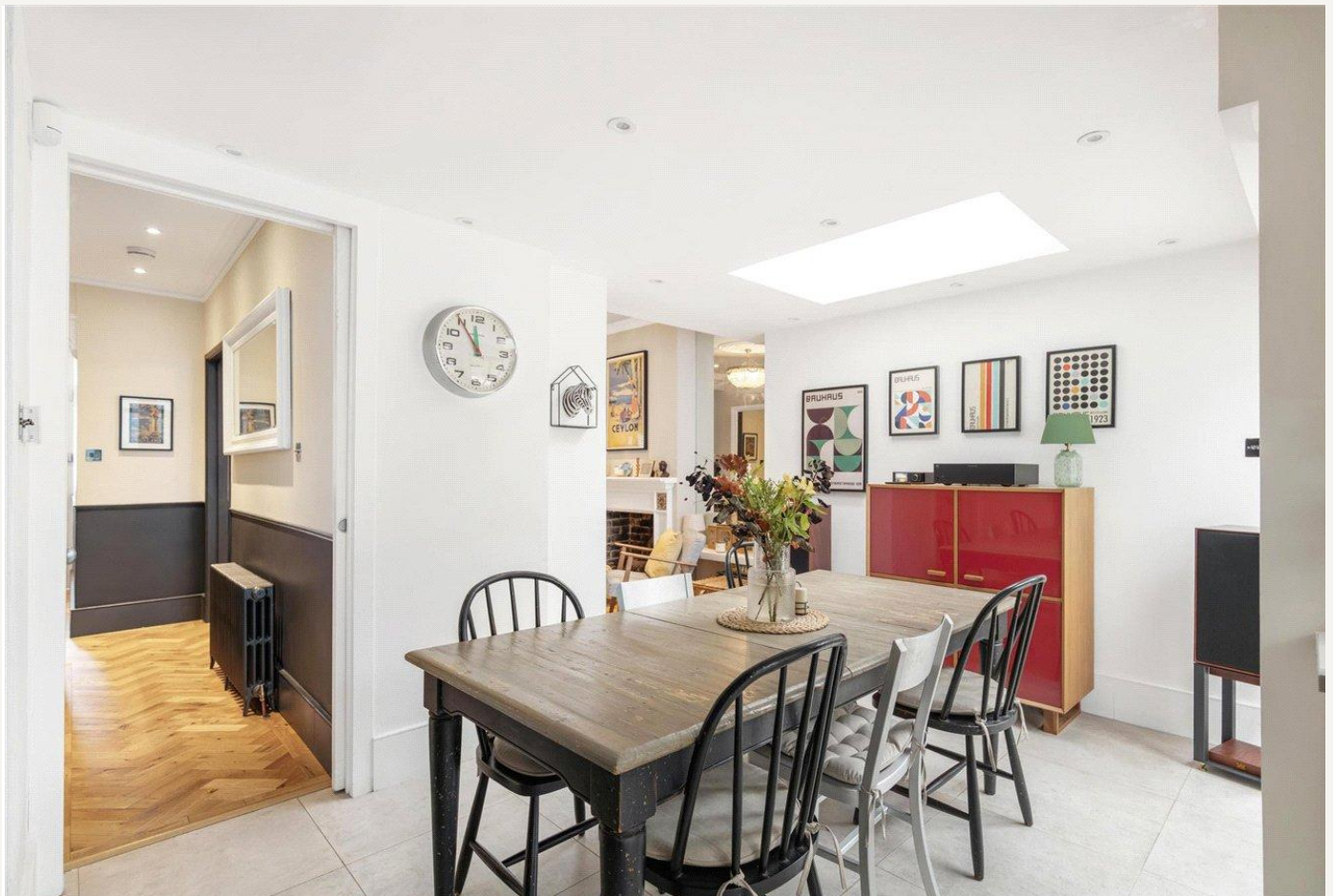
for every step...



This outstanding property features 5 large bedrooms, 2 generous reception rooms, a study, and a gorgeous private garden with a paved patio for easy maintenance and hosting. The property further benefits from underfloor heating throughout the kitchen and dining room, beautiful oak flooring in the hallway and double reception room, and timber sash windows at the front of the house. With a 3-zone heating system, a Victorian front garden, tiled path and London Gault brick walls, the property is in truly excellent condition and would be perfect for someone's forever home!

South Vale is excellently located, equidistant from both Crystal Palace and Gipsy Hill, and benefits from its great catchment for Rockmount Primary school as well as easy access to the lovely green space of Westow park at the end of the road. The property is only a 5-minute walk from the Crystal Palace Triangle, where residents can enjoy an array of local amenities, boutique shops, independent cafes, and trendy restaurants, bars and pubs.





MATERIAL INFO

Tenure: Freehold
Council Tax Band: E
EPC rating: D

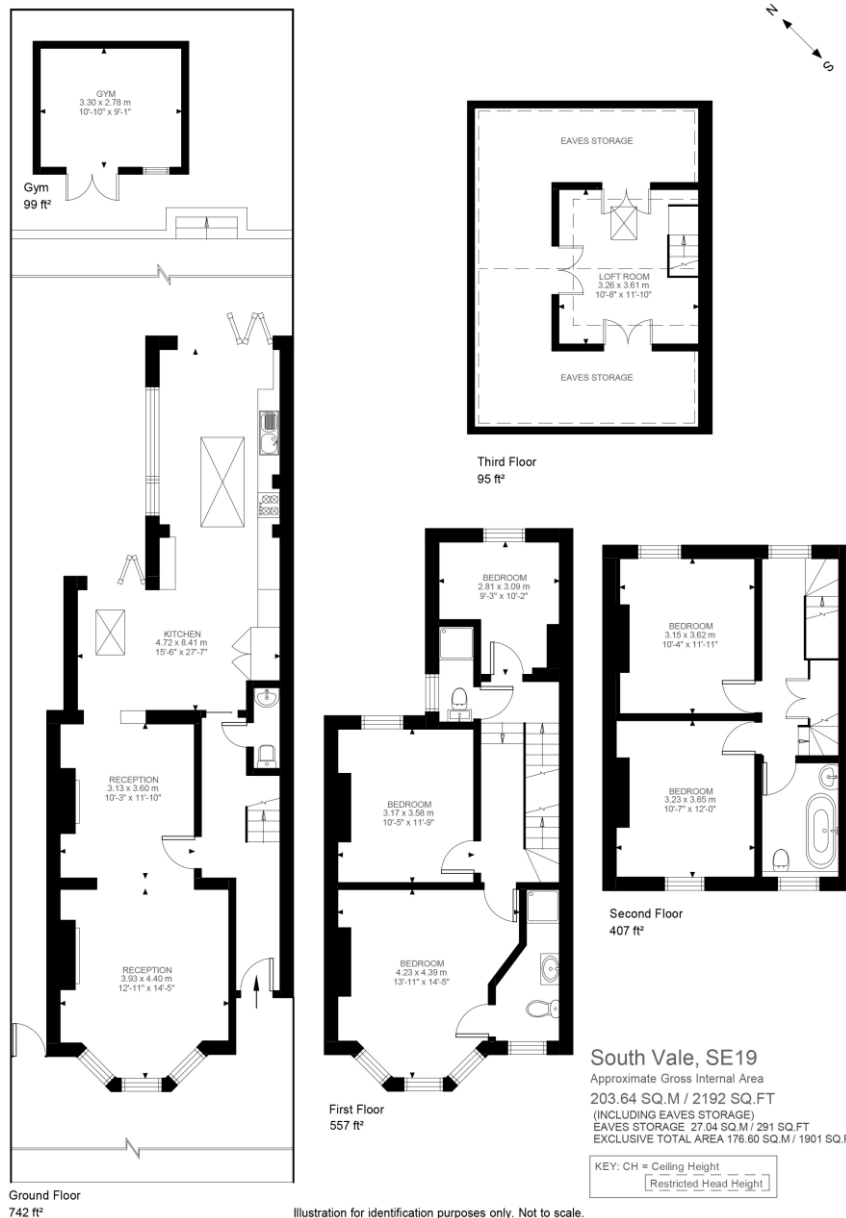
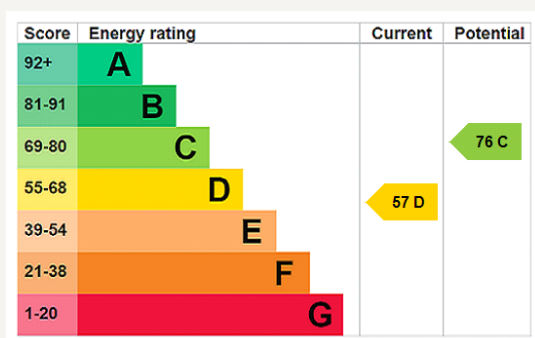


Illustration for identification purposes only. Not to scale.
Floor Plan Drawn According To RICS Guidelines.



Where no figures are shown, we have been unable to ascertain the information. All figures that are shown were correct at the time of printing.

Crystal Palace

02038693222 | crystalpalace@winkworth.co.uk

Winkworth

for every step...

Winkworth wishes to inform prospective buyers and tenants that these particulars are a guide and act as information only. All our details are given in good faith and believed to be correct at the time of printing but they don't form part of an offer or contract. No Winkworth employee has authority to make or give any representation or warranty in relation to this property. All fixtures and fittings, whether fitted or not are deemed removable by the vendor unless stated otherwise and room sizes are measured between internal wall surfaces, including furnishings.