



HOSACK ROAD, SW17
£825,000 LEASEHOLD

**AN EXCEPTIONAL TWO DOUBLE BEDROOM
GARDEN MAISONETTE ON A SOUGHT-AFTER
RESIDENTIAL STREET.**

Tooting | 020 8767 5221 | tooting@winkworth.co.uk



DESCRIPTION:

An exceptional two double bedroom garden maisonette which is located on a sought-after residential street. Beautifully presented and measuring approximately 962 square feet, the property provides an abundance of natural light and space throughout and features a very private garden.

Towards the front is a stunning large reception room which could be used as a third bedroom depending on individual requirements. Master bedroom with gorgeous feature fireplace, family bathroom and further double bedroom.

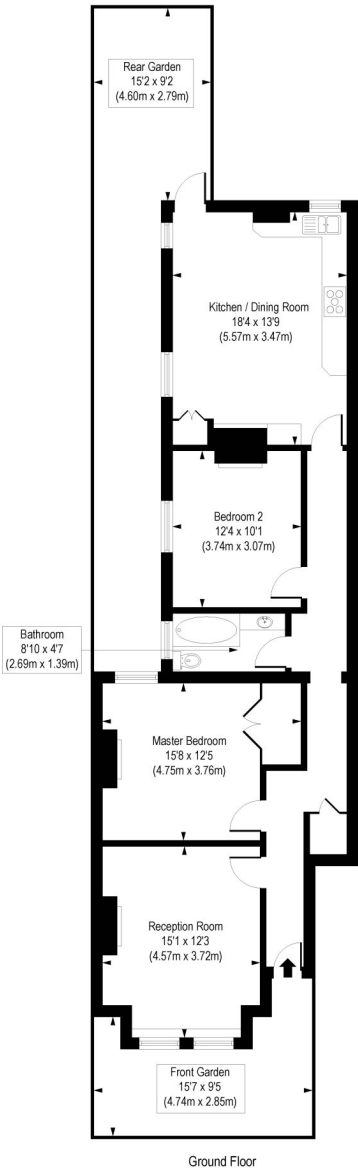
To the rear is an exceptional open-plan living space opening to the private rear garden.. This wonderful maisonette has been very well designed, the property offers a great space, perfect for entertaining as well as everyday living.

This property is offered to the market chain free.

Hosack Road is located between the junctions of Marius Road and Boundaries Road. The amenities of Bellevue Road and Balham High Road are within easy walking distance, as are the open spaces of Wandsworth Common. Transport can be found at Balham with a choice of Underground or Overground services just a ten-minute walk away. There are a good number of state and private schools nearby, subject to catchment each year.



Hosack Road, SW17
Approx. Gross Internal Floor Area 962 sq. ft / 89.40 sq. m



COMPLIANT WITH RICS CODE OF MEASURING PRACTICE Floorplan is for illustrative purposes only and is not to scale. Every attempt has been made to ensure the accuracy of the floorplan shown, however all measurements, fixtures, fittings and data shown are an approximate interpretation for illustrative purposes only. Liability for errors, omissions or mis-statement through negligence or otherwise is hereby excluded.

This floorplan is for illustration purposes only and is not to scale. The position and size of doors, windows, appliances and other features are approximate.