



FINBOROUGH ROAD, SW17
£425,000 LEASEHOLD

**A STUNNING TWO BEDROOM CONVERSION LOCATED CLOSE TO
TOOTING OVERGROUND STATIONS AND THE WIDE OPEN
SPACES OF FIGGES MARSH**

Tooting | 020 8767 5221 | tooting@winkworth.co.uk



for every step...

winkworth.co.uk



DESCRIPTION:

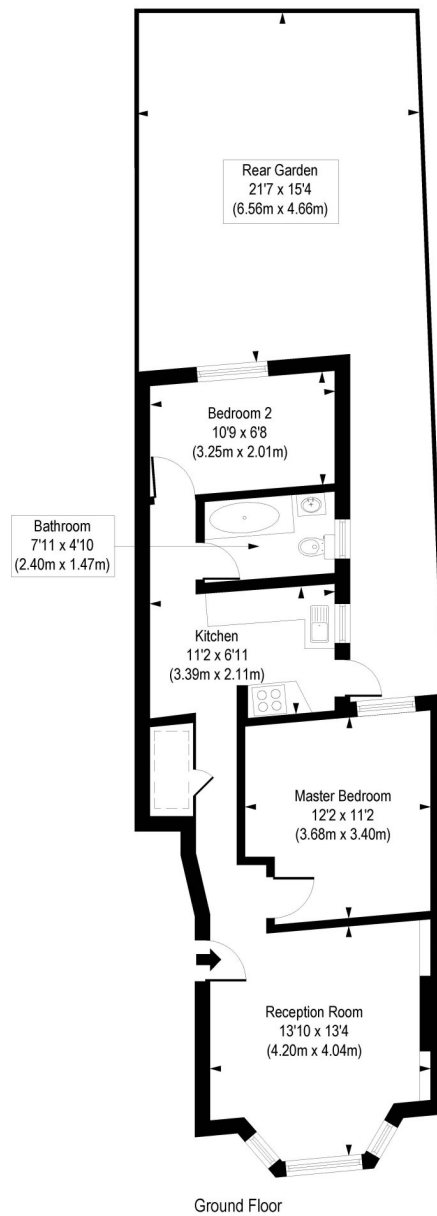
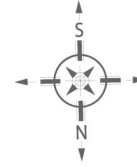
A charming ground floor two bedroom conversion, conveniently located for Tooting overground and Broadway tube station. The flat benefits from a beautiful front reception room with a stunning fireplace and bay window, master bedroom with tons of space for storage, family bathroom, second well proportioned bedroom, a fitted kitchen and french doors leading onto a private garden.

Finborough Road is situated in Tooting Broadway with easy access to Figges Marsh, Tooting Broadway Northern Line Tube link, Tooting overground Thames Link and local shopping facilities.



Finborough Road, SW17

Approx. Gross Internal Floor Area 572 sq. ft / 53.15 sq. m



COMPLIANT WITH RICS CODE OF MEASURING PRACTICE. Floorplan is for illustrative purposes only and is not to scale. Every attempt has been made to ensure the accuracy of the floorplan shown, however all measurements, fixtures, fittings and data shown are an approximate interpretation for illustrative purposes only. Liability for errors, omissions or mis-statement through negligence or otherwise is hereby excluded.

This floorplan is for illustration purposes only and is not to scale. The position and size of doors, windows, appliances and other features are approximate.

Tooting | 020 8767 5221 | tooting@winkworth.co.uk

Winkworth

for every step...

winkworth.co.uk

Winkworth wishes to inform prospective buyers and tenants that these particulars are a guide and act as information only. All our details are given in good faith and believed to be correct at the time of printing but they don't form part of an offer or contract. No Winkworth employee has authority to make or give any representation or warranty in relation to this property. All fixtures and fittings, whether fitted or not are deemed removable by the vendor unless stated otherwise and room sizes are measured between internal wall surfaces, including furnishings.