



Ladbroke Walk, W11

£950 per week (£4,116.66 PCM) *Unfurnished*



A VERY CHARMING THREE  
BEDROOM MEWS HOUSE IN THIS  
FANTASTIC LOCATION.

#### KEY FEATURES

- 3 Bedrooms
- 1 Reception
- 2 Bathrooms
- House
- Unfurnished
- 940 Approx Sq ft



Notting Hill Lettings

0207 727 3227 | [nottinghill@winkworth.co.uk](mailto:nottinghill@winkworth.co.uk)

**Winkworth**

for every step...

\*Tenant fees may apply: Details of tenant fees are available on the Winkworth website and the link can be found with the displayed rent for the property. Tenants should ensure they are fully conversant with any fees before making an offer to rent and your local Winkworth office can provide written details upon request.



## DESCRIPTION

A gorgeous three-bedroom mews house on this quiet cobbled street. Close to Notting Hill Gate and Holland Park tube stations it offers a fantastic location. The house has two double bedrooms; the master bedroom has a large en-suite bathroom. One further double, one single/study bedroom and second bathroom. The ground floor has a spacious open plan kitchen reception benefiting from wood floors throughout. The house is offered on an unfurnished basis and viewings are highly recommended.

Ladbroke Walk is a quiet cobbled street parallel to Holland Park Avenue, tucked away between Ladbroke Terrace and Ladbroke Grove, a stone's throw from the transport links of Holland Park Tube station and Notting Hill gate.

Utilities:

Electricity – Mains

Water – Mains

Sewerage – Mains

Heating – Gas

Broadband <https://checker.ofcom.org.uk/en-gb/broadband-coverage>

Mobile Coverage <https://checker.ofcom.org.uk/en-gb/mobile-coverage>



For more information, scan the QR code or visit the link below

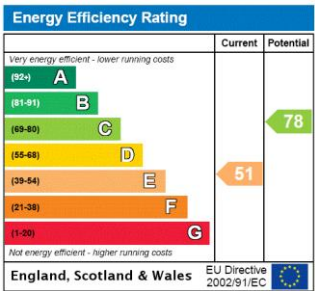


<https://www.winkworth.co.uk/rent/property/NHS100322>

Where no figures are shown, we have been unable to ascertain the information. All figures that are shown were correct at the time of printing.

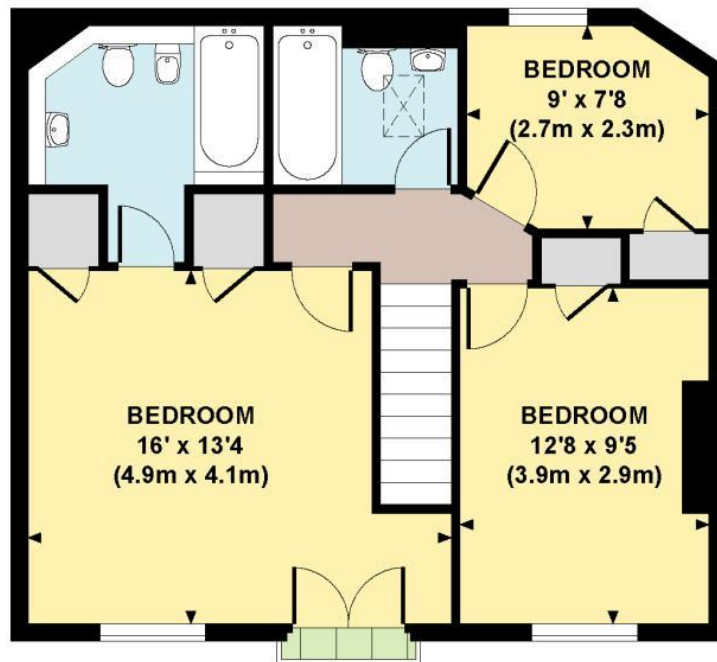
MATERIAL INFO

**Deposit:** £4,750  
**Holding Deposit:** £950  
**Council Tax Band:** G (RBKC)

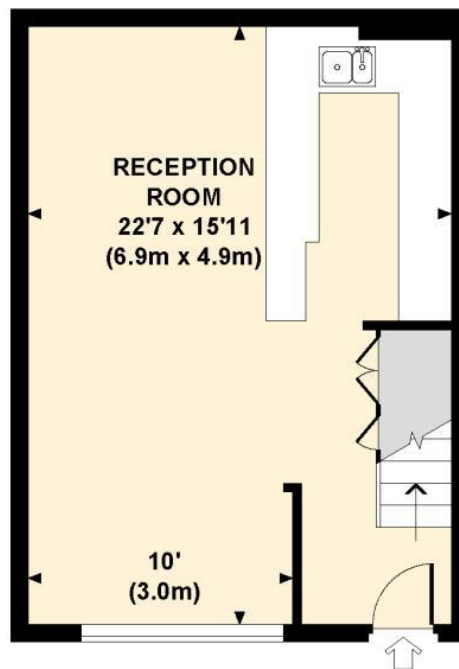


# LADBROKE WALK, W11

Approx. gross internal area  
940 Sq Ft. / 87 Sq M.



FIRST FLOOR



GROUND FLOOR



Every attempt has been made to ensure the accuracy of this floor plan however, measurements are approximate and for illustration purposes only. Not to scale. Photography, floor plans & brochures © 2011 Dowling Jones Design Ltd www.dowlingjonesdesign.com 020 7610 9933 / 01783 974 209

Notting Hill Lettings

0207 727 3227 | [nottinghill@winkworth.co.uk](mailto:nottinghill@winkworth.co.uk)

**Winkworth**

for every step...

Winkworth wishes to inform prospective buyers and tenants that these particulars are a guide and act as information only. All our details are given in good faith and believed to be correct at the time of printing but they don't form part of an offer or contract. No Winkworth employee has authority to make or give any representation or warranty in relation to this property. All fixtures and fittings, whether fitted or not are deemed removable by the vendor unless stated otherwise and room sizes are measured between internal wall surfaces, including furnishings.