



27 WESTGATE PARK, SLEAFORD, NG34 7QP
£89,950 FREEHOLD

Situated on the popular and well presented Westgate Park this two bedroom detached home is located in an attractive position and is located a short walk from local amenities and the town centre.

Sleaford | 01529 303 377 | sleaford@winkworth.co.uk

Winkworth

for every step...

winkworth.co.uk

ACCOMMODATION

Kitchen Dining Room - 11' x 10' (3.35m x 3.05m) Approached by a part glazed UPVC door the kitchen dining room has a box bay window to front aspect, UPVC window to side aspect, fitted with a modern range of base and eye level units with bevel edged wood effect work surfacing over, stainless steel sink, gas hob with extractor over, electric oven, space for washing machine and fridge, wall mounted gas fired boiler, radiator, coving to ceiling.

Living Room - 11' x 10'5" (3.35m x 3.18m) UPVC window to side aspect, UPVC french doors to side aspect giving access to patio, adam style fireplace with electric fire, television point, telephone point, wood effect flooring, radiator.

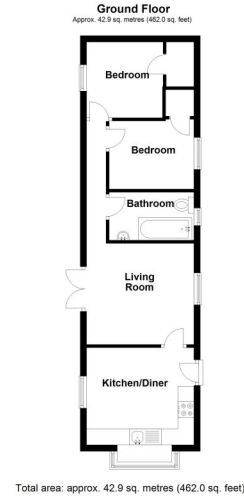
Inner Hallway - UPVC window to side aspect, radiator, linen store.

Bathroom - Opaque glazed window to side aspect, fitted with a 3 piece suite comprising panelled bath with electric shower over, close coupled WC, pedestal hand wash basin, radiator.

Bedroom 1 - 8' x 8' (2.44m x 2.44m) UPVC window to side aspect, television point, radiator, walk in wardrobe.

Bedroom 2 - 8'1" x 7' (2.46m x 2.13m) UPVC window to side aspect, built in wardrobe, radiator, telephone point.

Outside - The property boasts an established position in this popular development, the grounds are laid primarily to low maintenance paved patio/seating area and gravelled beds and borders, there are 2 useful sheds.



This floorplan is for illustration purposes only and is not to scale. The position and size of doors, windows, appliances and other features are approximate.

Sleaford | 01529 303 377 | sleaford@winkworth.co.uk

Winkworth

for every step...

winkworth.co.uk

Winkworth wishes to inform prospective buyers and tenants that these particulars are a guide and act as information only. All our details are given in good faith and believed to be correct at the time of printing but they don't form part of an offer or contract. No Winkworth employee has authority to make or give any representation or warranty in relation to this property. All fixtures and fittings, whether fitted or not are deemed removable by the vendor unless stated otherwise and room sizes are measured between internal wall surfaces, including furnishings.