

MAYER HOUSE, READING, BERKSHIRE, RG1 7AN
£1,550 PER MONTH PART FURNISHED

TWO BEDROOM TOWN CENTRE APARTMENT WITHIN THE POPULAR CHATHAM PLACE DEVELOPMENT.

Reading | 0118 4022 300 | reading@winkworth.co.uk

Winkworth

for every step...

winkworth.co.uk



DESCRIPTION:

Two bedroom fourth floor apartment within the Chatham Place development in the heart of the town centre, a short walk to the railway station and The Oracle shopping complex. The property comprises open plan living room/kitchen, private balcony accessed via the living room, two double bedrooms and a three piece bathroom. Further benefits include use of the two communal terraces and lift access. Available now. Part furnished.

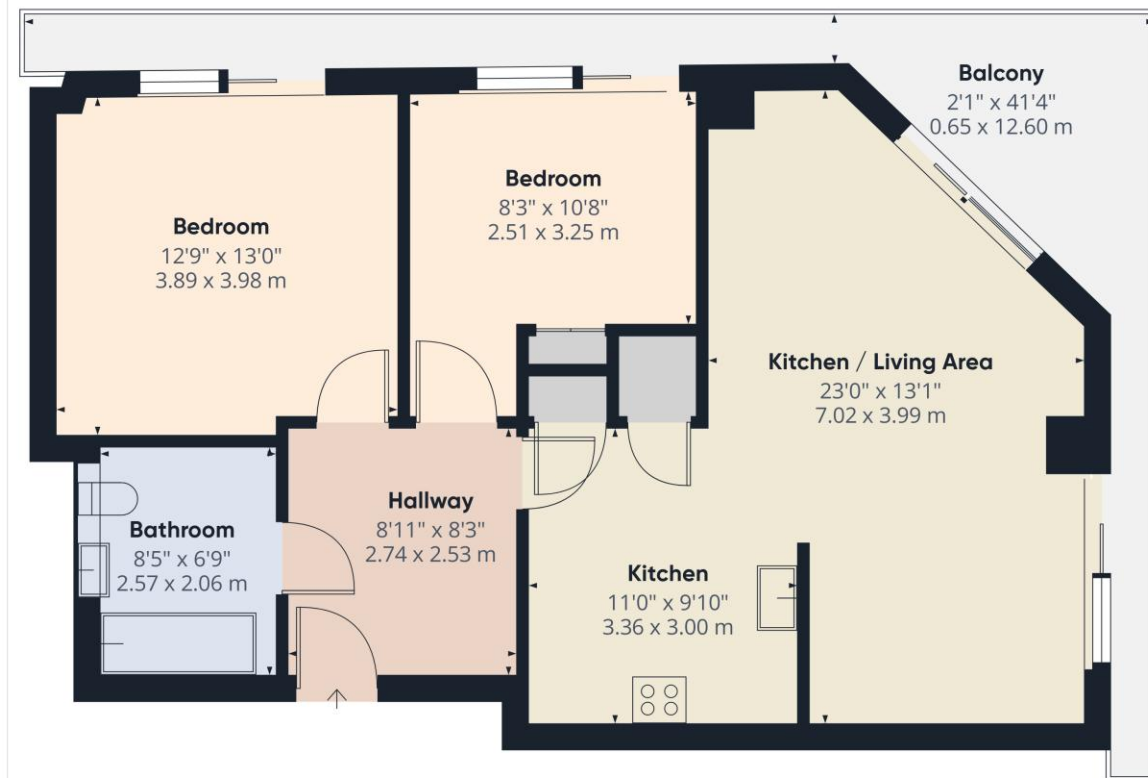
*No parking.

AT A GLANCE

- Two bedroom apartment
- 4th floor with lift access
- Private balcony
- No parking
- Council tax band D
- Available now
- Part furnished







Winkworth

Approximate total area⁽¹⁾

751 ft²
69.9 m²

Balconies and terraces

186 ft²
17.3 m²

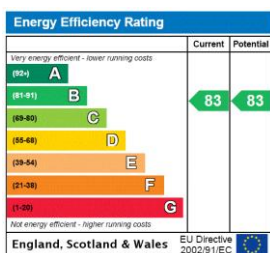
(1) Excluding balconies and terraces

While every attempt has been made to ensure accuracy, all measurements are approximate, not to scale. This floor plan is for illustrative purposes only.

Calculations are based on RICS IPMS 3C standard.

GIRAFFE 360

This floorplan is for illustration purposes only and is not to scale. The position and size of doors, windows, appliances and other features are approximate.



Deposit: £1,788.46

Holding Deposit: £357.69

Council Tax Band: D

Where no figures are shown, we have been unable to ascertain the information. All figures that are shown were correct at the time of printing.

Winkworth

Reading | 0118 4022 300 | reading@winkworth.co.uk

for every step...

winkworth.co.uk

Winkworth wishes to inform prospective buyers and tenants that these particulars are a guide and act as information only. All our details are given in good faith and believed to be correct at the time of printing but they don't form part of an offer or contract. No Winkworth employee has authority to make or give any representation or warranty in relation to this property. All fixtures and fittings, whether fitted or not are deemed removable by the vendor unless stated otherwise and room sizes are measured between internal wall surfaces, including furnishings.