



FEATHERS PLACE, GREENWICH, LONDON, SE10  
**£1,100,000 FREEHOLD**

**UTTERLY CHARMING IS THE BEST WAY TO DESCRIBE THIS STUNNING FOUR STOREY PROPERTY, IN EXCELLENT DECORATIVE ORDER, LOCATED JUST YARDS FROM ROYAL GREENWICH PARK'S GATE AND THE QUEEN'S HOUSE.**

Greenwich | 02030533033 | [greenwich@winkworth.co.uk](mailto:greenwich@winkworth.co.uk)

**Winkworth**

*winkworth.co.uk*

See things differently





## DESCRIPTION:

**GRADE II LISTED:** Utterly charming is the best way to describe this stunning four storey property, in excellent decorative order, located just yards from Royal Greenwich Park's Gate and the Queen's House.

This four bedroom house is located in a reserved road within the historic centre of Greenwich, moments from local amenities, bars and restaurants and excellent connections to Canary Wharf and the City.

The hall floor offers two double bedrooms, both with direct access to a modern shower room and access out onto a lovely, secluded patio garden. On the lower level there is a very attractive contemporary and high gloss fitted kitchen alongside a generous dining room and guest WC. Upstairs comprises of a spacious double reception room, two further double bedrooms and modern family bathroom suite.

This is an exquisitely elegant family home and your earliest viewing is essential

## AT A GLANCE

- GRADE II LISTED
- stunning four storey house
- moments from Royal Park
- four bedrooms
- two bathroom
- two reception
- lovely kitchen
- patio garden to rear
- very quiet road
- excellent location
- close to town centre

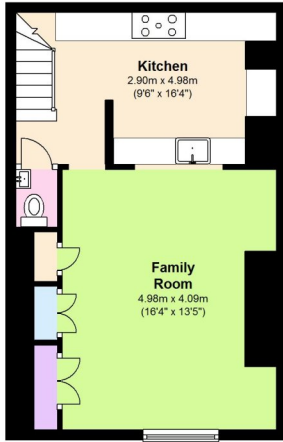






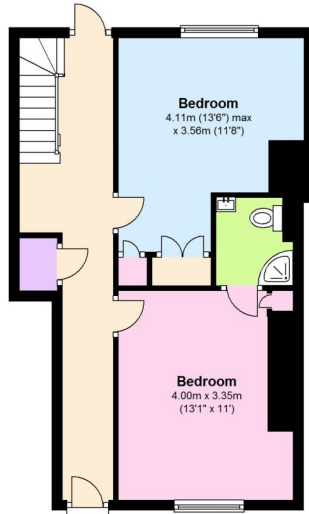
### Basement

Approx. 39.7 sq. metres (427.5 sq. feet)



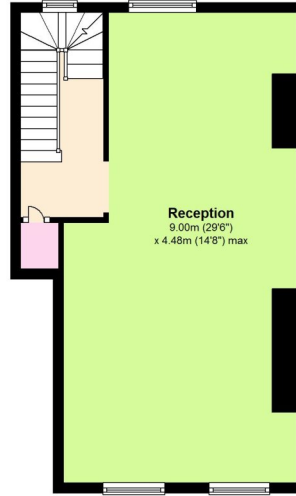
### Ground Floor

Approx. 43.6 sq. metres (469.5 sq. feet)



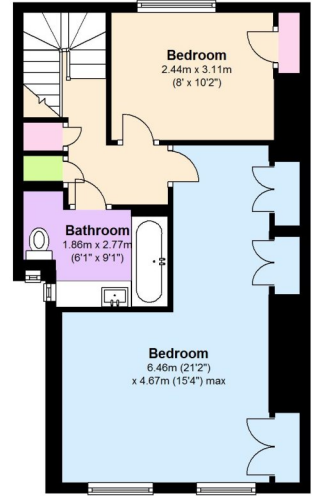
### First Floor

Approx. 44.3 sq. metres (476.9 sq. feet)



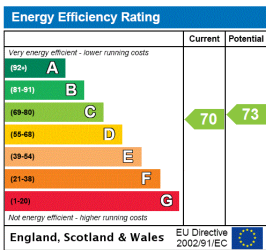
### Second Floor

Approx. 45.2 sq. metres (486.2 sq. feet)



Total area: approx. 172.8 sq. metres (1860.2 sq. feet)

This floorplan is for illustration purposes only and is not to scale. The position and size of doors, windows, appliances and other features are approximate.



Greenwich | 02030533033 | greenwich@winkworth.co.uk



winkworth.co.uk

See things differently

Winkworth wishes to inform prospective buyers and tenants that these particulars are a guide and act as information only. All our details are given in good faith and believed to be correct at the time of printing but they don't form part of an offer or contract. No Winkworth employee has authority to make or give any representation or warranty in relation to this property. All fixtures and fittings, whether fitted or not are deemed removable by the vendor unless stated otherwise and room sizes are measured between internal wall surfaces, including furnishings.