

CHEVENING ROAD, NW6
£3,250 PER MONTH UNFURNISHED

A STUNNING TWO BEDROOM APARTMENT IN ONE OF THE MOST DESIRABLE LOCATIONS IN QUEENS PARK

Kensal Rise & Queens Park | 0208 960 4947 | kensalrise@winkworth.co.uk

Winkworth

for every step...

winkworth.co.uk



DESCRIPTION:

This superb flat has been meticulously designed and renovated by the previous owners to the highest of standards and has accommodation measuring over 850 sq. ft. First impressions of the building are excellent with a Victorian tiled pathway leading to an impressive front entrance hall. Upstairs you will find three bedrooms (one currently being used as a walk in wardrobe), a family bathroom and an open plan living space with large south facing bay window overlooking the street. This stunning flat also benefits from a rear private garden with decking area, hooked up with electricity this space will be an a great entertaining space for the summer.

Well Suited For A Professional Couple.

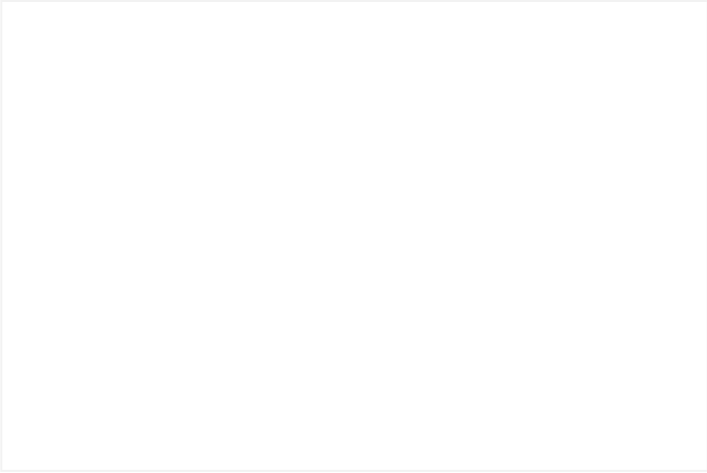
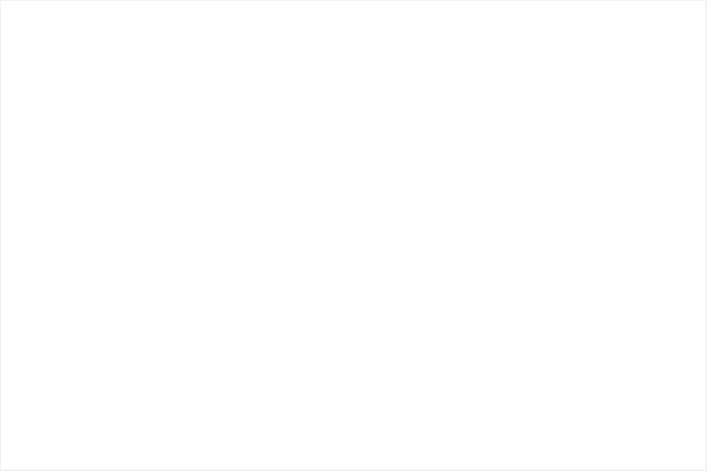
Unfurnished however the TV in the reception remains.

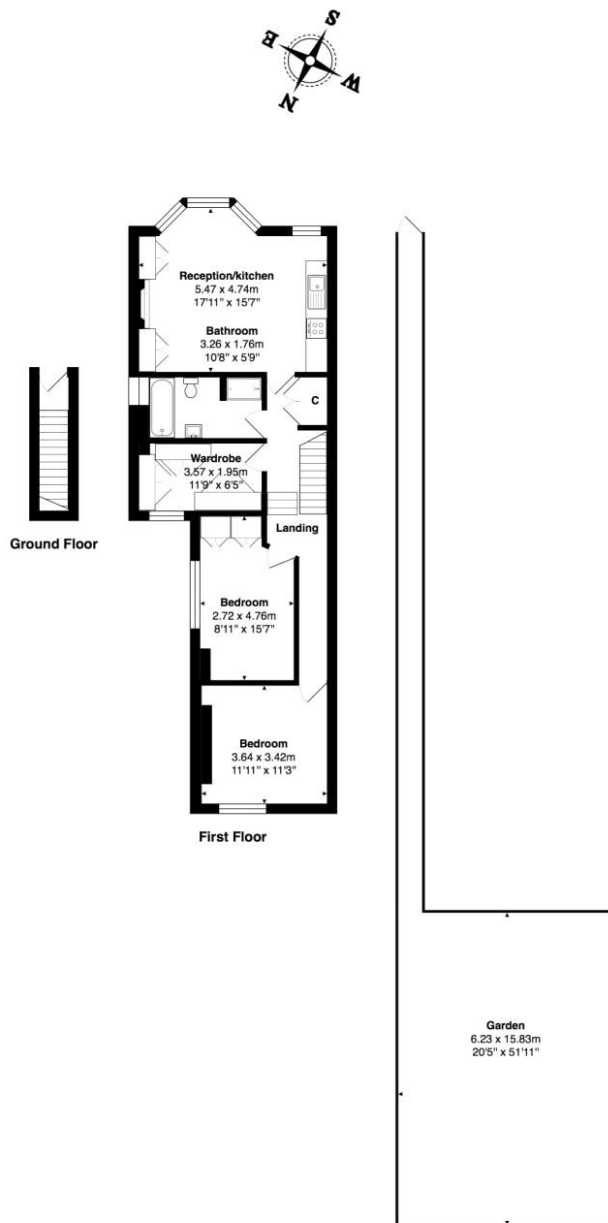
Council tax - (Band D)

Ward - Queens Park

Controlled Parking Zone

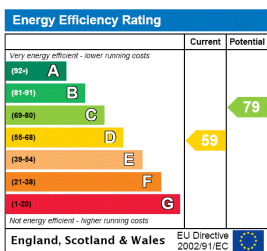
8.30 am - 6.30 pm Mon. - Fri.





Total Area: 79.7 m² ... 858 ft² (excluding , garden)
All measurements are approximate and for display purposes only

This floorplan is for illustration purposes only and is not to scale. The position and size of doors, windows, appliances and other features are approximate.



Deposit: 5 weeks rent

Holding Deposit: 1 weeks rent

Council Tax Band: D

Where no figures are shown, we have been unable to ascertain the information. All figures that are shown were correct at the time of printing.

Winkworth

for every step...

Kensal Rise & Queens Park | 0208 960 4947 | kensalrise@winkworth.co.uk

winkworth.co.uk

Winkworth wishes to inform prospective buyers and tenants that these particulars are a guide and act as information only. All our details are given in good faith and believed to be correct at the time of printing but they don't form part of an offer or contract. No Winkworth employee has authority to make or give any representation or warranty in relation to this property. All fixtures and fittings, whether fitted or not are deemed removable by the vendor unless stated otherwise and room sizes are measured between internal wall surfaces, including furnishings.