



FRESTON PARK, LONDON, N3
£1,700,000 FREEHOLD

**A FOUR BEDROOM DETACHED HOUSE, SET
 ON A QUIET RESIDENTIAL TURNING.**

Finchley | 020 8349 3388 | finchley@winkworth.co.uk

Winkworth

for every step...

winkworth.co.uk



DESCRIPTION:

PROBATE SALE

Set in one of Finchley's prestigious turnings off Hendon Avenue, we are pleased to offer this detached family home. The property is comprised of a spacious hallway entrance, through lounge, kitchen with a utility area and downstairs cloakroom to the ground floor. The first floor consists of four bedrooms, en suite to the primary bedroom, family bathroom and separate wc. Further benefits include an integral garage, off street parking and a private south facing aspect rear garden with a large patio area. The property has a vast amount of potential for further expansion (stpp) to create a wonderful family home.

Offered on a chain free basis.

AT A GLANCE

- SET ON A PRIME ROAD IN THE N3 AREA
- DETACHED HOUSE
- THROUGH LOUNGE
- FOUR BEDROOMS
- EN SUITE TO PRIMARY BEDROOM
- SOUTH FACING ASPECT REAR GARDEN
- OFF STREET PARKING & GARAGE
- POTENTIAL TO EXTEND STPP





Winkworth



Winkworth



Winkworth



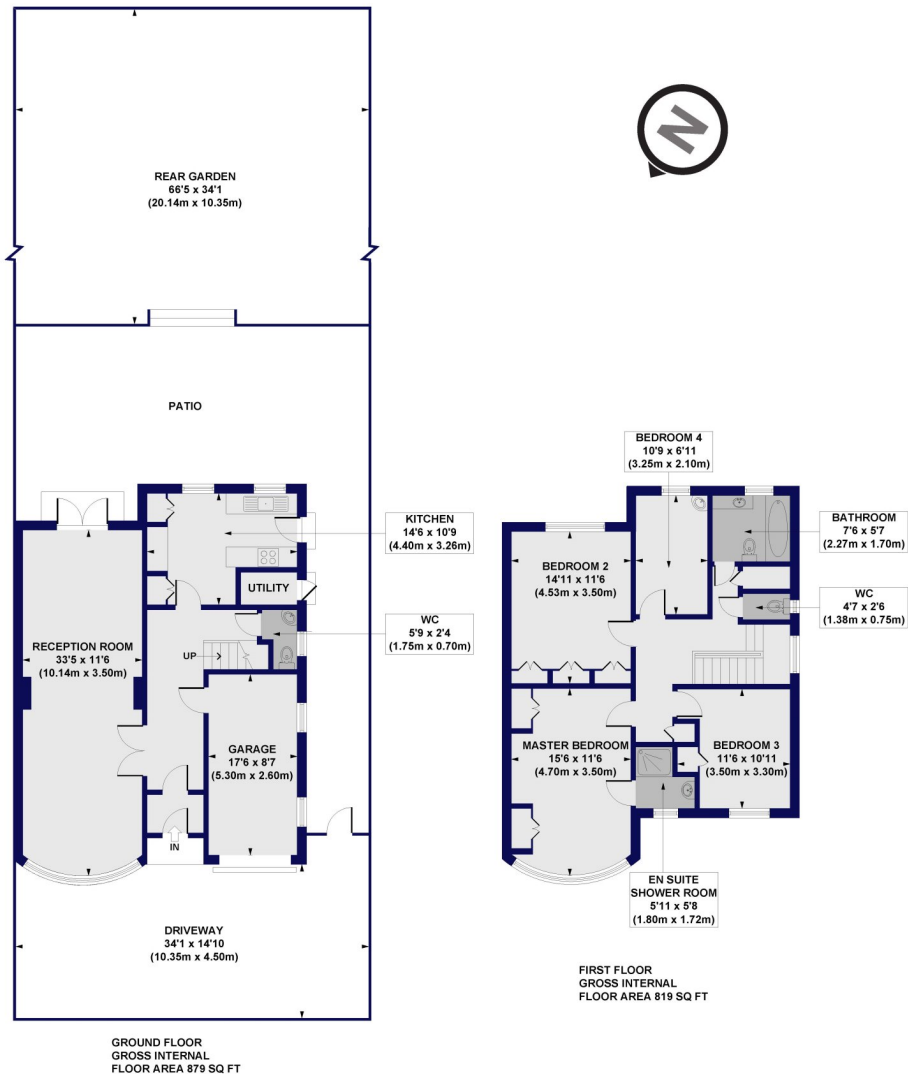
Winkworth



Winkworth

Freston Park, N3

Approx. Gross Internal Floor Area 1698 sq. ft / 157.76 sq. m (Including Garage)



All measurements of walls, doors, windows, fittings and appliances, including their size and location, are shown as standard sizes and do not constitute any warranty or representation by the seller, their agent or CP Creative. Any intending purchaser must satisfy himself by inspection or otherwise as to the correctness of the information contained in these plans. This plan is for illustrative purposes only and should be used as such by any prospective purchasers.

Winkworth

This floorplan is for illustration purposes only and is not to scale. The position and size of doors, windows, appliances and other features are approximate.

Score	Energy rating	Current	Potential
92+	A		
81-91	B		81 B
69-80	C		
55-68	D	60 D	
39-54	E		
21-38	F		
1-20	G		

Tenure: Freehold

Council Tax Band: G

Where no figures are shown, we have been unable to ascertain the information. All figures that are shown were correct at the time of printing.

Finchley | 020 8349 3388 | finchley@winkworth.co.uk

Winkworth

for every step...

winkworth.co.uk

Winkworth wishes to inform prospective buyers and tenants that these particulars are a guide and act as information only. All our details are given in good faith and believed to be correct at the time of printing but they don't form part of an offer or contract. No Winkworth employee has authority to make or give any representation or warranty in relation to this property. All fixtures and fittings, whether fitted or not are deemed removable by the vendor unless stated otherwise and room sizes are measured between internal wall surfaces, including furnishings.