

THURLOE SQUARE | SW7



Winkworth

Thurloe Square SW7

RENT: £806.00pw / £3,492.66pcm

- One -Two Bedrooms
- Two Bathrooms
- Apartment with garden
- Unfurnished
- Resident Parking

LOCAL AUTHORITY: Royal Borough of Kensington & Chelsea

COUNCIL TAX BAND: Band G



Energy Efficiency Rating		
	Current	Potential
Very energy efficient - lower running costs		
(92+) A		
(81-91) B		
(69-80) C	73	80
(55-68) D		
(39-54) E		
(21-38) F		
(1-20) G		
Not energy efficient - higher running costs		
England, Scotland & Wales	EU Directive 2002/91/EC	

Knightsbridge & Chelsea | 020 7589 6616
knightsbridge@winkworth.co.uk



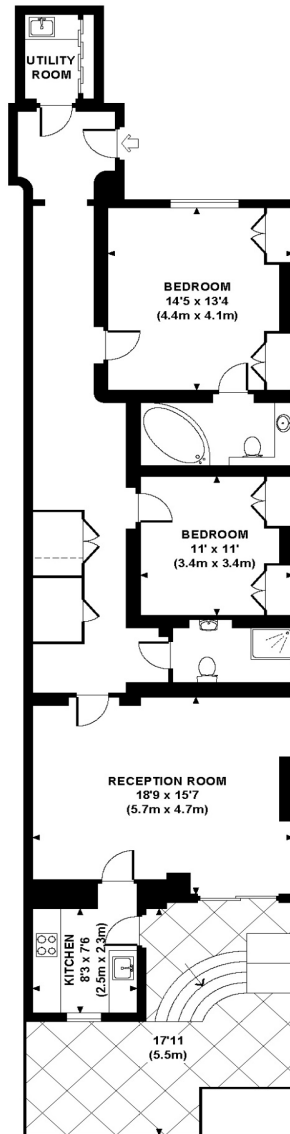
for every step...

winkworth.co.uk

Winkworth wishes to inform prospective buyers and tenants that these particulars are a guide and act as information only. All our details are given in good faith and believed to be correct at the time of printing but they don't form part of an offer or contract. No Winkworth employee has authority to make or give any representation or warranty in relation to this property. All fixtures and fittings, whether fitted or not are deemed removable by the vendor unless stated otherwise and room sizes are measured between internal wall surfaces, including furnishings.

THURLOE SQUARE, SW7

Approx. gross internal area
1179 Sq Ft. / 110 Sq M.



LOWER GROUND FLOOR



All measurements are approximate and for illustration purposes only as defined by the RICS Code of Measuring Practice © 2012
Dowling Jones Design www.dowlingjones.com 020 7610 9933