



MEARS CLOSE, LONDON, E1
OFFERS IN EXCESS OF **£575,000** LEASEHOLD

STUNNING TWO BEDROOM PROPERTY WITH PRIVATE PATIO IN A SECURE GATED DEVELOPMENT.

Shoreditch | 020 7749 7650 | shoreditch@winkworth.co.uk

Winkworth



DESCRIPTION:

A stunning two-bedroom property with private patio in a secure gated development. Enter the gates of Mears Close and you will find this little oasis in the midst of the hustle and bustle of East London. The property comprises a large open plan living space with patio doors on to the private turfed courtyard area, integrated kitchen with island/breakfast bar, two double bedrooms, one with access to a mini patio area, and a family bathroom with bath and shower over attachment.

Mears Close is ideally situated between Whitechapel (Elizabeth line) and Aldgate East station offering fantastic access to both the City and Canary Wharf. You also have Shadwell overground and DLR close by. In addition, there are a wealth of local amenities close by with most notably Brick Lane and Spitalfields Market.

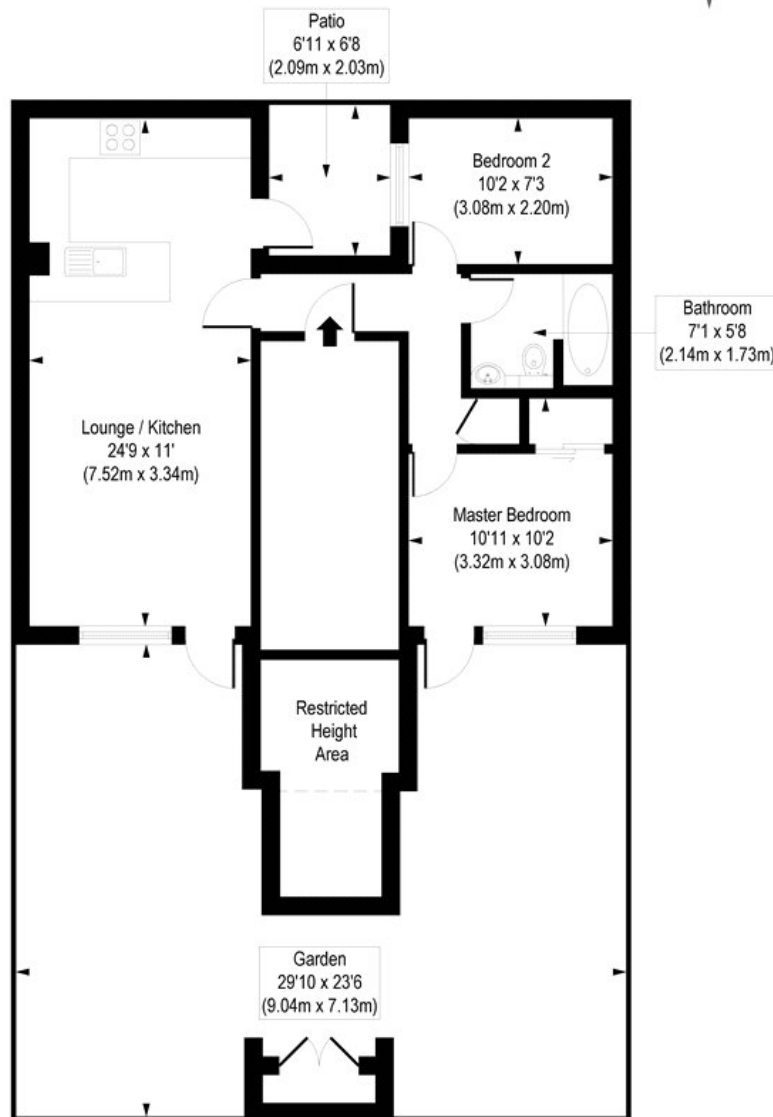
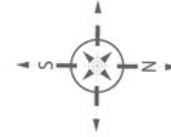
Winkworth



Winkworth

Mears Close, E1

Approx. Gross Internal Floor Area 552 sq. ft / 51.32 sq. m



Lower Ground Floor

COMPLIANT WITH RICS CODE OF MEASURING PRACTICE Floorplan is for illustrative purposes only and is not to scale. Every attempt has been made to ensure the accuracy of the floorplan shown, however all measurements, fixtures, fittings and data shown are an approximate interpretation for illustrative purposes only. Liability for errors, omissions or mis-statement through negligence or otherwise is hereby excluded.

This floorplan is for illustration purposes only and is not to scale. The position and size of doors, windows, appliances and other features are approximate.

Shoreditch | 020 7749 7650 | shoreditch@winkworth.co.uk

Winkworth

winkworth.co.uk

See things differently

Winkworth wishes to inform prospective buyers and tenants that these particulars are a guide and act as information only. All our details are given in good faith and believed to be correct at the time of printing but they don't form part of an offer or contract. No Winkworth employee has authority to make or give any representation or warranty in relation to this property. All fixtures and fittings, whether fitted or not are deemed removable by the vendor unless stated otherwise and room sizes are measured between internal wall surfaces, including furnishings.