



## Dartmouth Road, Willesden Green, London, NW2

£2,600 per month *Furnished*



Top floor apartment with large double bedrooms located moments from Willesden Green Underground Station. Available NOW.

### KEY FEATURES

- Top Floor
- Three Double Bedrooms
- One Bathroom
- Separate Kitchen
- Spacious Reception Room
- Carpets In The Bedrooms / Living Room



**Kensal Rise & Queens Park**

0208 960 4947 | [kensalrise@winkworth.co.uk](mailto:kensalrise@winkworth.co.uk)

**Winkworth**

for every step...







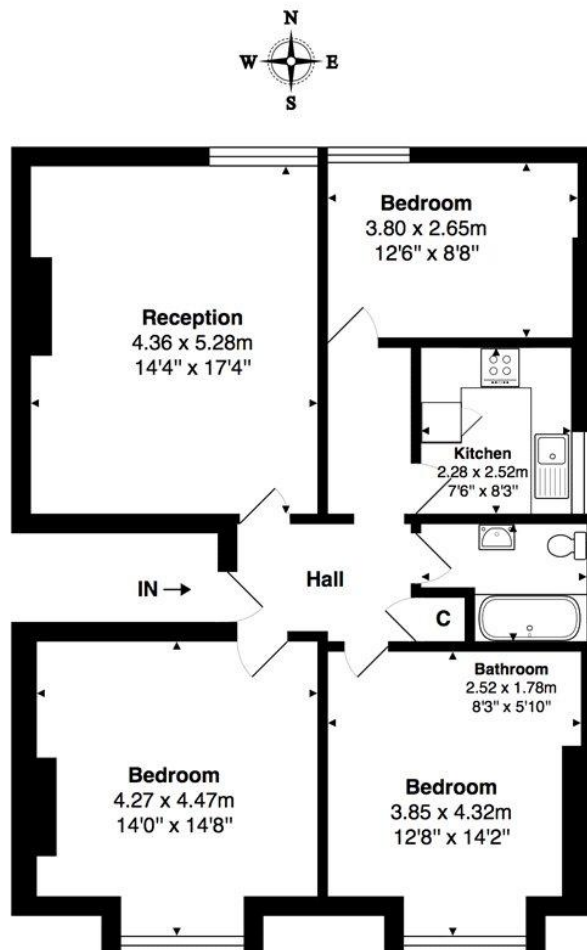
**MATERIAL INFO**

**Deposit:** 5 weeks rent

**Holding Deposit:** 1 weeks rent

**Council Tax Band:** D





**2nd Floor**

**Total Area: 88.4 m<sup>2</sup> ... 951 ft<sup>2</sup>**

All measurements are approximate and for display purposes only

Energy Efficiency Rating		
	Current	Potential
Very energy efficient - lower running costs		
(92+) <b>A</b>		
(81-91) <b>B</b>		
(69-80) <b>C</b>		
(55-68) <b>D</b>		65
(39-54) <b>E</b>	42	
(21-38) <b>F</b>		
(1-20) <b>G</b>		
Not energy efficient - higher running costs		
England, Scotland & Wales	EU Directive 2002/91/EC	

For more information, scan the QR code or visit the link below



<https://www.winkworth.co.uk/rent/property/WIG110477>

Where no figures are shown, we have been unable to ascertain the information. All figures that are shown were correct at the time of printing.

**Kensal Rise & Queens Park**

0208 960 4947 | [kensalrise@winkworth.co.uk](mailto:kensalrise@winkworth.co.uk)

**Winkworth**

for every step...

Winkworth wishes to inform prospective buyers and tenants that these particulars are a guide and act as information only. All our details are given in good faith and believed to be correct at the time of printing but they don't form part of an offer or contract. No Winkworth employee has authority to make or give any representation or warranty in relation to this property. All fixtures and fittings, whether fitted or not are deemed removable by the vendor unless stated otherwise and room sizes are measured between internal wall surfaces, including furnishings.