

SLOANE AVENUE | SW3

Winkworth


Sloane Avenue SW3

RENT: £1,000pw / £4,333 pcm

- 3 Bedrooms (2 Doubles / 1 Single)
- Second Floor
- Furnished
- Underfloor Heating
- Wood Floors

LOCAL AUTHORITY: Royal Borough of Kensington & Chelsea

COUNCIL TAX BAND: Band G

Energy Efficiency Rating		
	Current	Potential
Very energy efficient - lower running costs		
(92+) A		
(81-91) B		
(69-80) C	79	79
(55-68) D		
(39-54) E		
(21-38) F		
(1-20) G		
Not energy efficient - higher running costs		
England, Scotland & Wales	EU Directive 2002/91/EC	



Knightsbridge & Chelsea | 020 7589 6616
knightsbridge@winkworth.co.uk

Winkworth

for every step...

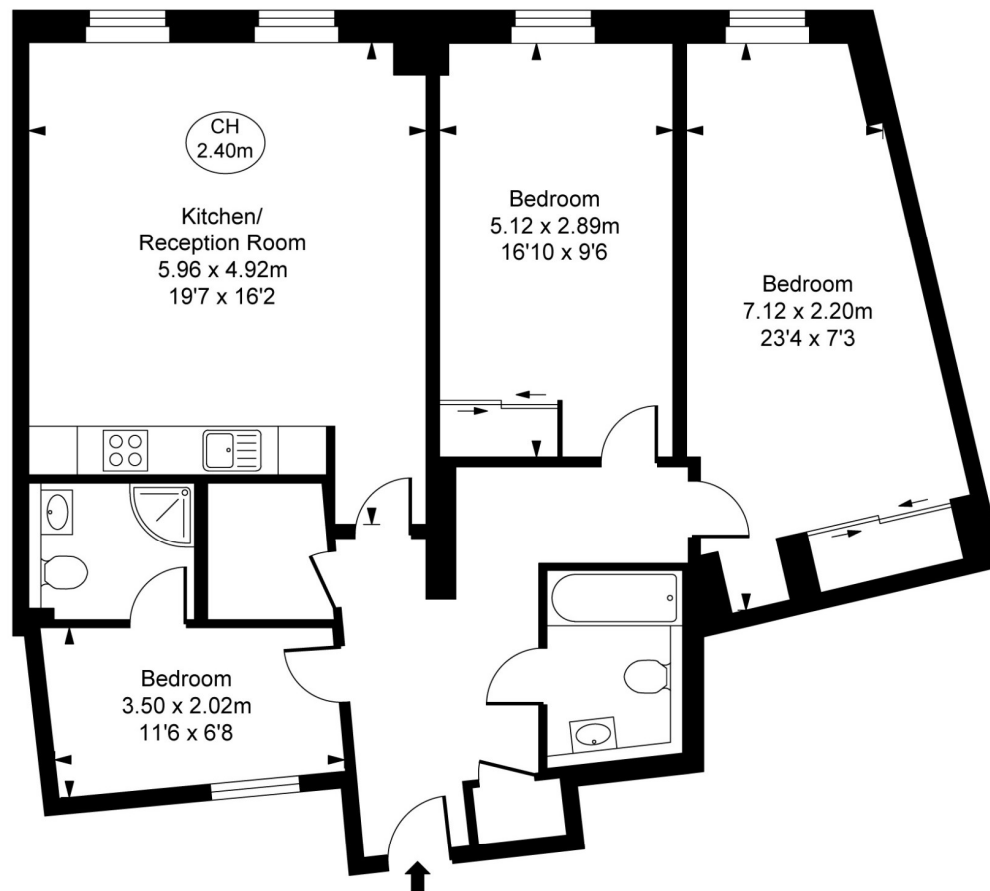
winkworth.co.uk

Winkworth wishes to inform prospective buyers and tenants that these particulars are a guide and act as information only. All our details are given in good faith and believed to be correct at the time of printing but they don't form part of an offer or contract. No Winkworth employee has authority to make or give any representation or warranty in relation to this property. All fixtures and fittings, whether fitted or not are deemed removable by the vendor unless stated otherwise and room sizes are measured between internal wall surfaces, including furnishings.

Sloane Avenue, SW3
Approximate Gross Internal Area
95.56 sq m / 1,029 sq ft



(CH = Ceiling Heights)



Second Floor