



KENSINGTON GARDENS SQUARE, W2
£575 PER WEEK (£2,491.66 PCM) FURNISHED

**A WONDERFULLY SPACIOUS AND BRIGHT TOP FLOOR
 ONE BEDROOM FLAT WITH ACCESS TO COMMUNAL
 GARDENS.**

Notting Hill Lettings | 0207 727 3227 | nottinghill@winkworth.co.uk

Winkworth

for every step...

winkworth.co.uk



DESCRIPTION:

A wonderfully spacious and very bright top floor one bedroom flat with access to communal gardens. The flat comprises lovely living room with wood floors, separate fully fitted kitchen, wonderfully spacious double bedroom and bathroom. The property is offered furnished.

Utilities:

Electricity – Mains

Water – Mains

Sewerage – Mains

Heating – Gas

Broadband <https://checker.ofcom.org.uk/en-gb/broadband-coverage>

Mobile Coverage <https://checker.ofcom.org.uk/en-gb/mobile-coverage>

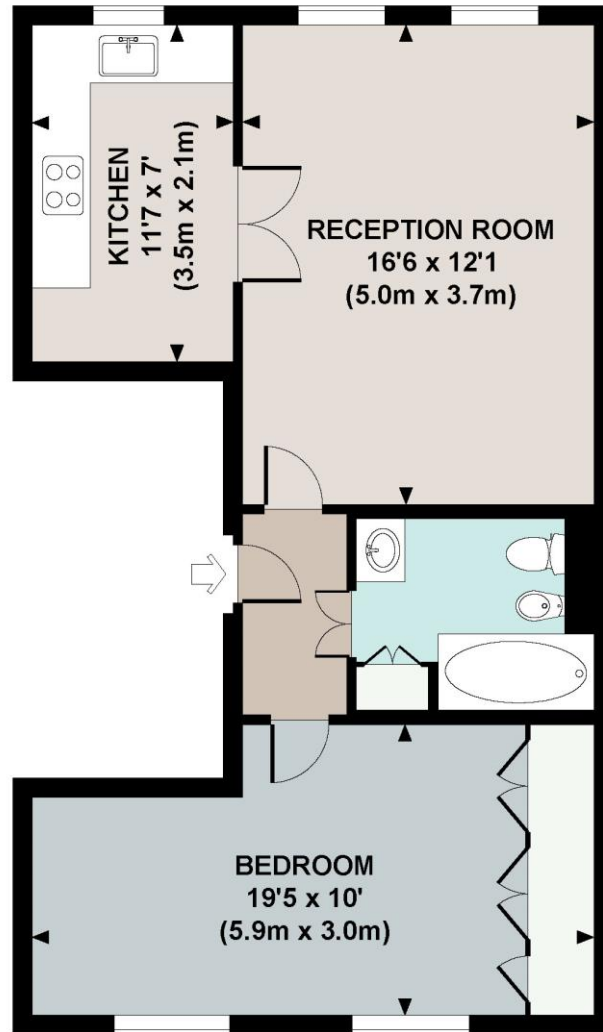
LOCATION:

Kensington Gardens Square is a square of imposing stucco fronted buildings encircling two communal gardens, running south from Westbourne Grove with its many shops and restaurants, and just to the east Queensway and its many amenities and transport links.



KENSINGTON GARDENS SQUARE, W2

Approx. gross internal area
550 Sq.Ft. / 51.1 Sq.M.

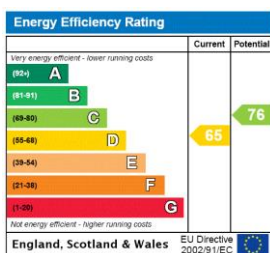


FOURTH FLOOR



All measurements are approximate and for illustration purposes only as defined by the RICS Code of Measuring Practice © 2014.
Dowling Jones Design www.dowlingjones.com 020 7610 9933

This floorplan is for illustration purposes only and is not to scale. The position and size of doors, windows, appliances and other features are approximate.



Deposit: £2,875

Holding Deposit: £575

Council Tax Band: D (Westminster)

Where no figures are shown, we have been unable to ascertain the information. All figures that are shown were correct at the time of printing.

Notting Hill Lettings | 0207 727 3227 | nottinghill@winkworth.co.uk

Winkworth

for every step...

winkworth.co.uk

Winkworth wishes to inform prospective buyers and tenants that these particulars are a guide and act as information only. All our details are given in good faith and believed to be correct at the time of printing but they don't form part of an offer or contract. No Winkworth employee has authority to make or give any representation or warranty in relation to this property. All fixtures and fittings, whether fitted or not are deemed removable by the vendor unless stated otherwise and room sizes are measured between internal wall surfaces, including furnishings.