



LORDSHIP LANE, EAST DULWICH, SE22
£500,000 LEASEHOLD

A SPACIOUS, CHARACTERFUL MAISONETTE,
SITUATED IN A PRIME SPOT-ON LORDSHIP
LANE.

Dulwich | 020 8299 2722 | dulwich@winkworth.co.uk

Winkworth

winkworth.co.uk

See things differently



DESCRIPTION:

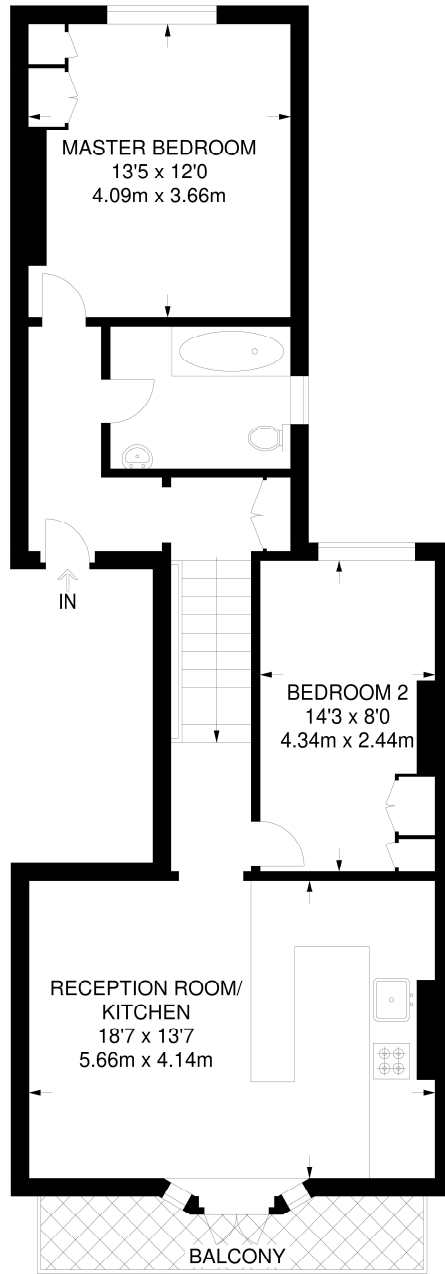
A spacious, characterful maisonette, situated in a prime spot on Lordship Lane. This stunning maisonette is offered to the market in fantastic condition. Comprising a spacious open-plan kitchen reception, complete with a fully fitted kitchen, breakfast bar, and wooden work surfaces. The open-plan kitchen reception also boasts a balcony, ideal for evening drinks or coffee in the morning. The property further boasts two spacious double bedrooms, with original wood flooring and a spacious family bathroom. The location provides fantastic access to the hustle and bustle of Lordship Lane, with its impressive array of shops, bars, restaurants, and cinema. Transport links are provided via multiple bus links on Lordship Lane to the city and beyond, or a short stroll to either East Dulwich station for direct links to London Bridge or Peckham Rye for the overground.

AT A GLANCE

- Two Bedrooms
- First Floor Maisonette
- Open Plan Kitchen-Reception
- Modern Bathroom
- Balcony
- Leasehold
- Central Location



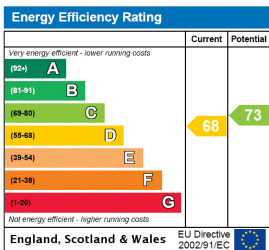




FIRST FLOOR

**APPROXIMATE GROSS INTERNAL AREA
725 SQ FT / 67.3 SQ M**

This floorplan is for illustration purposes only and is not to scale. The position and size of doors, windows, appliances and other features are approximate.



Dulwich | 020 8299 2722 | dulwich@winkworth.co.uk



winkworth.co.uk

See things differently

Winkworth wishes to inform prospective buyers and tenants that these particulars are a guide and act as information only. All our details are given in good faith and believed to be correct at the time of printing but they don't form part of an offer or contract. No Winkworth employee has authority to make or give any representation or warranty in relation to this property. All fixtures and fittings, whether fitted or not are deemed removable by the vendor unless stated otherwise and room sizes are measured between internal wall surfaces, including furnishings.