



Southampton Street, Berkshire, RG1 2QL

£1,700 per month *Furnished*

2  1  1 

Modern split level two bedroom apartment located in Reading town centre in this beautiful Grade II listed building. The property benefits from a private entrance and comprises open plan living room / kitchen with integrated appliances, modern shower room and two double bedrooms. Two off road parking spaces included. Available now. Furnished.

KEY FEATURES

- Modern split level apartment
- Two double bedrooms
- Located in Reading town centre
- Council tax band A
- Two parking spaces
- Available now
- Furnished

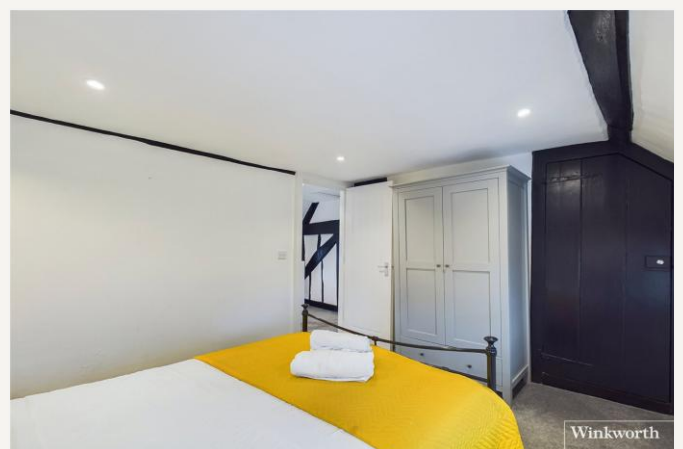


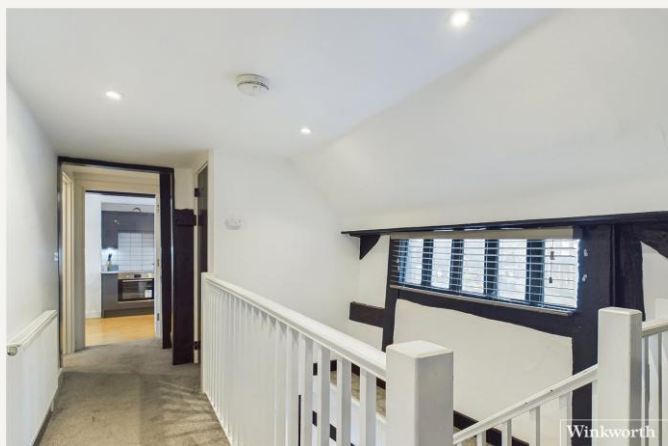
Reading

0118 4022 300 | reading@winkworth.co.uk

Winkworth

for every step...



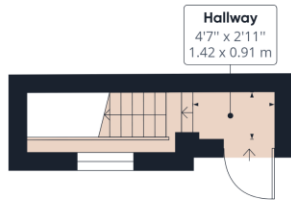


MATERIAL INFO

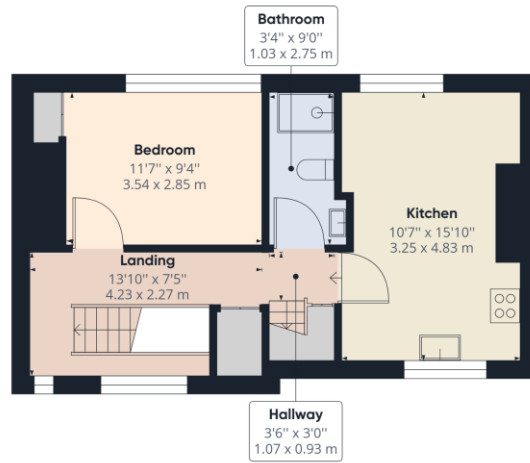
Deposit: £1,961.54

Holding Deposit: £392.30

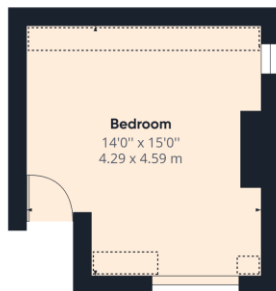
Council Tax Band: A



Ground Floor



Floor 1



Floor 2

Approximate total area⁽¹⁾

663.51 ft²
61.64 m²

Reduced headroom

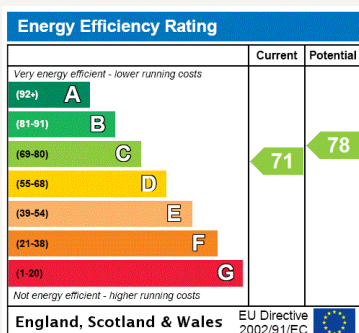
25.16 ft²
2.34 m²

(1) Excluding balconies and terraces

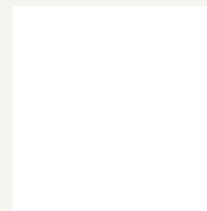
Reduced headroom
(below 1.5m/4.92ft)

While every attempt has been made to ensure accuracy, all measurements are approximate, not to scale. This floor plan is for illustrative purposes only.

GIRAFFE 360



For more information, scan the QR code or visit the link below



<https://www.winkworth.co.uk/rent/property/REA210198>

Where no figures are shown, we have been unable to ascertain the information. All figures that are shown were correct at the time of printing.

Reading

0118 4022 300 | reading@winkworth.co.uk

Winkworth

for every step...

Winkworth wishes to inform prospective buyers and tenants that these particulars are a guide and act as information only. All our details are given in good faith and believed to be correct at the time of printing but they don't form part of an offer or contract. No Winkworth employee has authority to make or give any representation or warranty in relation to this property. All fixtures and fittings, whether fitted or not are deemed removable by the vendor unless stated otherwise and room sizes are measured between internal wall surfaces, including furnishings.