



**PIPERS HOUSE, GREENWICH, LONDON, SE10**  
**GUIDE PRICE £355,000-£365,000 LEASEHOLD**

**A BEAUTIFUL AND BRIGHT ONE BEDROOM FIRST FLOOR APARTMENT THAT IS PART OF THIS SUPREMELY POPULAR BLOCK LOCATED JUST OFF THE RIVER WALKWAY AND CLOSE TO THE TOWN CENTRE. MEASURING CIRCA 576 SQ FT. THE PROPERTY IS ELIGIBLE FOR RESIDENTS PARKING PERMITS VIA GREENWICH COUNCIL. EWS1 COMPLIANT!**

Greenwich | 02030533033 | [greenwich@winkworth.co.uk](mailto:greenwich@winkworth.co.uk)

**Winkworth**

*winkworth.co.uk*

See things differently



## DESCRIPTION:

Guide Price £355,000-£365,000. A beautiful and bright one bedroom first floor apartment that is part of this supremely popular block located just off the river walkway and close to the town centre. Measuring circa 576 sq ft. The property is eligible for residents parking permits via Greenwich Council. EWS1 COMPLIANT!

In excellent order the property comprises a lovely 17ft reception room, large double bedroom and a semi open plan modern kitchen. The bathroom is well presented and there is a good sized entrance hall with ample storage. Added benefits include a large communal roof terrace. its worth mentioning that the residents self manage as a block which has given a great deal of control and flexibility as to how the block is managed and maintained.

Pipers House is perfectly located on the cusp of east and west Greenwich, just a few moments away from the river and the wonderful Cutty Sark pub! Greenwich town centre, with its fine array of shops and restaurants is also just a short walk away. Transport links include rail from Maze Hill to London Bridge, DLR and underground from North Greenwich. Greenwich Park with its Observatory is also close by as are the new leisure facilities at Greenwich Square.

## AT A GLANCE

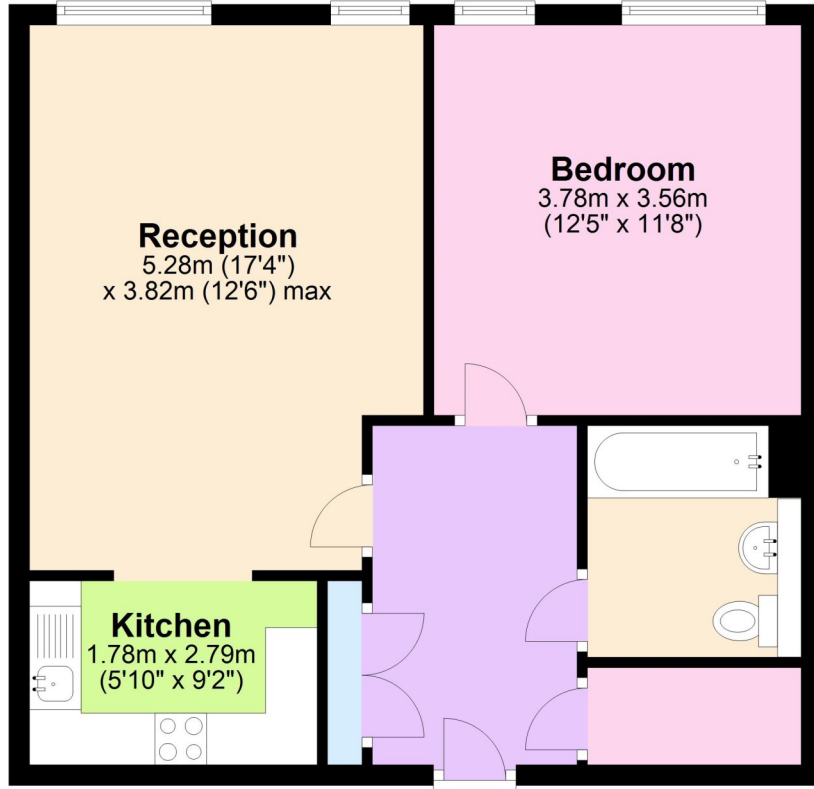
- superb apartment
- one bedroom
- first floor
- circa 576 sq ft
- large communal roof terrace
- 17ft reception
- very good condition
- moments from river walk
- very close to town centre
- close to rail, riverboat and DLR





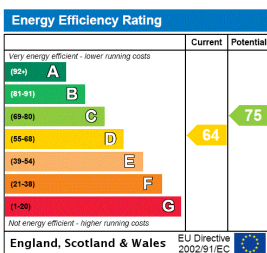
## First Floor

Approx. 53.5 sq. metres (576.2 sq. feet)



Total area: approx. 53.5 sq. metres (576.2 sq. feet)

This floorplan is for illustration purposes only and is not to scale. The position and size of doors, windows, appliances and other features are approximate.



Greenwich | 02030533033 | greenwich@winkworth.co.uk

**Winkworth**

winkworth.co.uk

See things differently

Winkworth wishes to inform prospective buyers and tenants that these particulars are a guide and act as information only. All our details are given in good faith and believed to be correct at the time of printing but they don't form part of an offer or contract. No Winkworth employee has authority to make or give any representation or warranty in relation to this property. All fixtures and fittings, whether fitted or not are deemed removable by the vendor unless stated otherwise and room sizes are measured between internal wall surfaces, including furnishings.