



Holland Road, London, NW10

£670,000 *Leasehold*



A spacious two double bedroom, ground floor flat with private South-West facing garden, presented in excellent order.

KEY FEATURES

- VICTORIAN CONVERSION
- CHAIN-FREE
- TWO DOUBLE BEDROOMS
- PRIVATE SOUTH-WEST FACING GARDEN
- OPEN PLAN RECEPTION & KITCHEN
- VERY CLOSE TO KING EDWARD PARK
- CLOSE TO MAJOR TRANSPORT LINKS



Kensal Rise & Queens Park

0208 960 4947 | kensalrise@winkworth.co.uk

Winkworth

for every step...

Winkworth wishes to inform prospective buyers and tenants that these particulars are a guide and act as information only. All our details are given in good faith and believed to be correct at the time of printing but they don't form part of an offer or contract. No Winkworth employee has authority to make or give any representation or warranty in relation to this property. All fixtures and fittings, whether fitted or not are deemed removable by the vendor unless stated otherwise and room sizes are measured between internal wall surfaces, including furnishings.



DESCRIPTION

A desirable ground floor flat, comprising of two spacious double bedrooms with both rooms benefitting from fitted wardrobes. The bathroom is a fully tiled three piece suite, with high quality fittings. Additionally, the utility cupboard in the hallway allows for double-stacking washer/dryer.

To the rear of the property, you will find a bright, airy and spacious open plan kitchen/diner with reception room. The South-West facing garden is a great sun trap and accessed directly off the reception room via French doors. This makes for a wonderful entertaining space. The flat has been renovated in recent years, and is therefore offered in excellent condition throughout.

Viewing comes highly recommended.





LOCATION

Holland Road is a lovely wide street just to the West of All Souls Avenue in Kensal Green, with the properties here being larger than average. Transport links at Kensal Green or Willesden Junction mean that you can use the London Overground or Underground or even the National Rail very easily and there is an array of shops, cafes and Gastropubs on College Road which is around 1/4 mile walk from the flat. King Edward Park is also a few minutes away from the front door.

For more information, scan the QR code or visit the link below

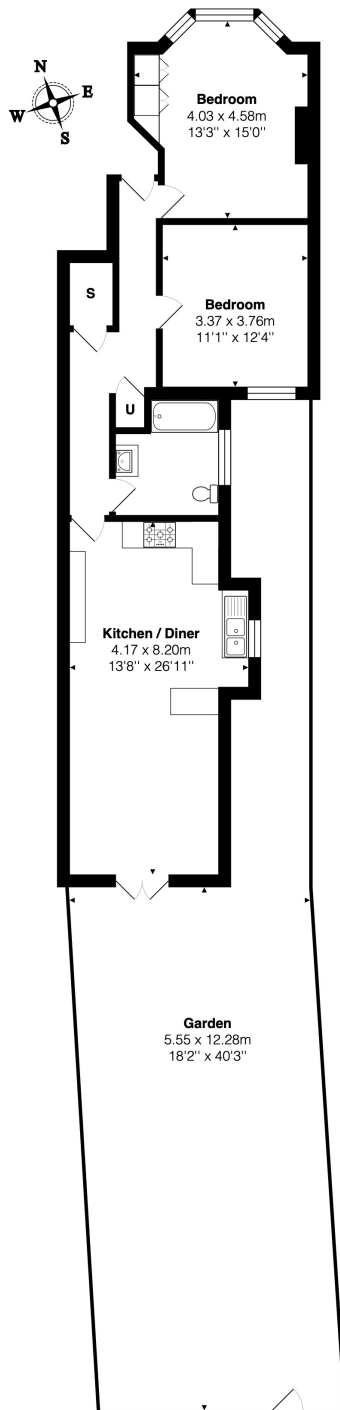


<https://www.winkworth.co.uk/sale/property/KQP220413>

Where no figures are shown, we have been unable to ascertain the information. All figures that are shown were correct at the time of printing.

MATERIAL INFO

Tenure: Leasehold
Term: 114 year and 0 months
Service Charge & Ground Rent: £530 per annum
Council Tax Band: D
EPC rating: C



Total Area: 77.7 m² ... 836 ft² (excluding garden)
 All measurements are approximate and for display purposes only

Kensal Rise & Queens Park

0208 960 4947 | kensalrise@winkworth.co.uk

Winkworth

for every step...

Winkworth wishes to inform prospective buyers and tenants that these particulars are a guide and act as information only. All our details are given in good faith and believed to be correct at the time of printing but they don't form part of an offer or contract. No Winkworth employee has authority to make or give any representation or warranty in relation to this property. All fixtures and fittings, whether fitted or not are deemed removable by the vendor unless stated otherwise and room sizes are measured between internal wall surfaces, including furnishings.