



Chancellors Road, W6

5  1 

£795,000 *Freehold*

A well-proportioned, four/ five bedroom, three bathroom, terraced house spanning 1,293 sq. ft within walking distance from the River Thames, being sold with no onward chain.



Fulham & Parsons Green

020 7731 3388 | [fulham@winkworth.co.uk](mailto:fulham@winkworth.co.uk)

**Winkworth**

for every step...





## DESCRIPTION

This purpose-built house has huge potential and is in need of updating. The ground floor consists of two large double en-suite bedrooms, both with private access to a garden. In the centre of the property is a kitchen which you can enter from the hallway between the two bedrooms. Stairs leading to the first floor take you to a further three bedrooms. Two of the bedrooms have built-in wardrobes, there is also a family style bathroom to serve these bedrooms.

Chancellors Road enjoys a favourable position in the Barons Court and Hammersmith area, just a short walk from the river. This vibrant location offers a perfect balance of riverside charm, urban convenience, and excellent transport links, with Hammersmith (District, Piccadilly, Hammersmith & City, and Circle lines) a close walk away.







MATERIAL INFORMATION

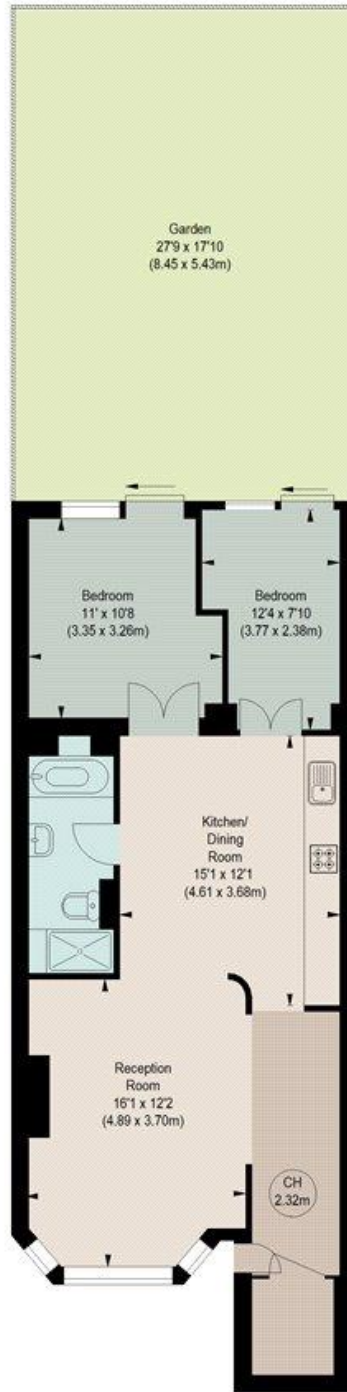
Tenure: Freehold  
Term: N/A  
Service Charge: N/A  
Ground Rent: N/A  
Council Tax Band: F  
EPC rating: D  
Is the property listed: Property is not listed

Score	Energy rating	Current	Potential
92+	A		
81-91	B		
69-80	C		77 C
55-68	D	63 D	
39-54	E		
21-38	F		
1-20	G		

## CHESILTON ROAD, SW6

Approximate gross internal area  
750 sq ft / 69.68 sq m

Key :  
CH - Ceiling Height



### BASEMENT

The floor plan is not to scale and measurements and areas shown are approximate and therefore should be used for illustrative purposes only. The plan has been prepared in accordance with the RICS code of Measuring Practice and whilst we have confidence in the information produced, it must not be relied on. If there is any aspect of particular importance, you should carry out or commission your own inspection of the property.

Fulham & Parsons Green

020 7731 3388 | [fulham@winkworth.co.uk](mailto:fulham@winkworth.co.uk)

**Winkworth**

for every step...

Winkworth wishes to inform prospective buyers and tenants that these particulars are a guide and act as information only. All our details are given in good faith and believed to be correct at the time of printing but they don't form part of an offer or contract. No Winkworth employee has authority to make or give any representation or warranty in relation to this property. All fixtures and fittings, whether fitted or not are deemed removable by the vendor unless stated otherwise and room sizes are measured between internal wall surfaces, including furnishings.