



EAST DULWICH ROAD, EAST DULWICH, LONDON, SE22
OIEO £375,000 LEASEHOLD

THIS FANTASTIC ONE DOUBLE BEDROOM, GROUND FLOOR MODERN FLAT IS SITUATED RIGHT IN THE CENTRE OF EAST DULWICH, OPPOSITE GOOSE GREEN AND CLOSE TO LORDSHIP LANE.

Dulwich | 020 8299 2722 | dulwich@winkworth.co.uk

Tenure Leasehold approx. 130 yrs remaining | Council Tax Band C – London Borough of Southwark | Service Charge TBC | Ground Rent TBC

Winkworth



DESCRIPTION:

This fantastic one double bedroom, ground floor modern flat is situated right in the centre of East Dulwich, opposite Goose Green and close to Lordship Lane. The property offers a modern open plan kitchen-living, shower room and a good size double bedroom. In addition there is allocated parking for one car and communal gardens. Located within easy access to the bars, restaurants, shops and cinema on Lordship Lane as well as those on Bellenden Road, Peckham Rye Park is also a short walk away. Transport links are provided direct into Central London via Peckham Rye with connections to the East London line or East Dulwich with links to London Bridge. This is a wonderful flat with early viewing recommended.

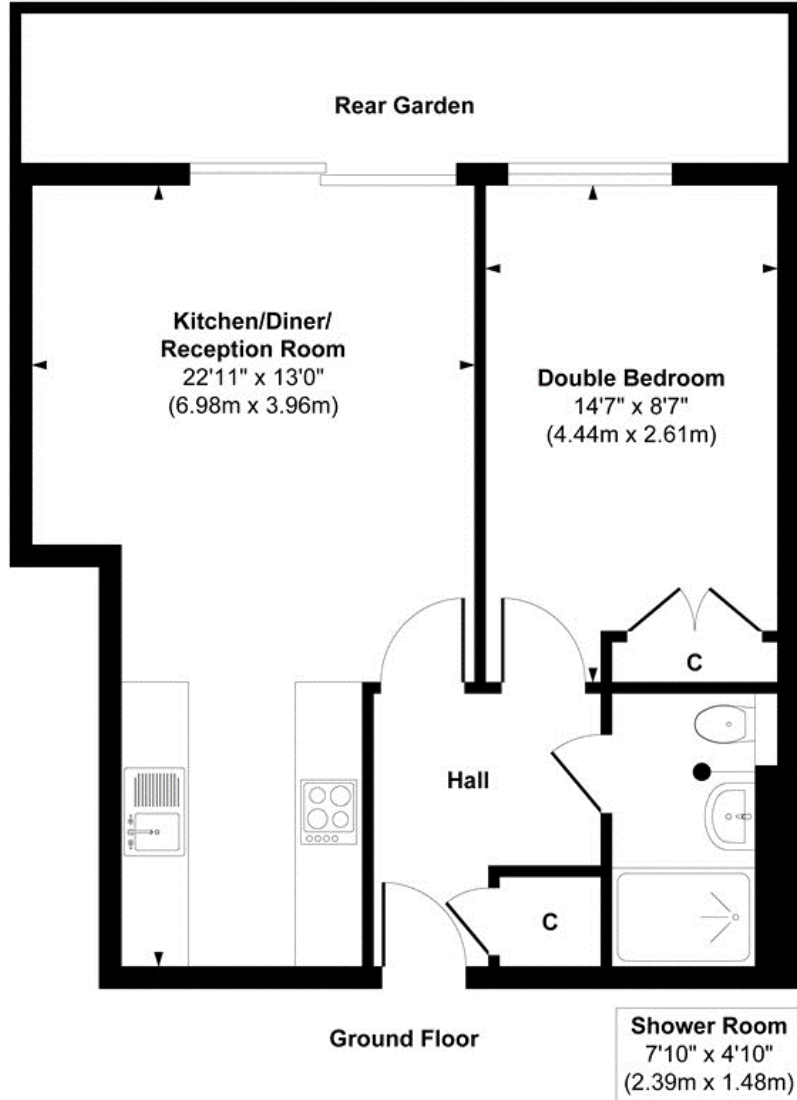
AT A GLANCE

- One Double Bedroom
- Ground Floor Flat
- Modern Open/Plan Kitchen/Living Area
- Private Patio
- Allocated Parking Space
- Great Transport Links
- Fantastic Location



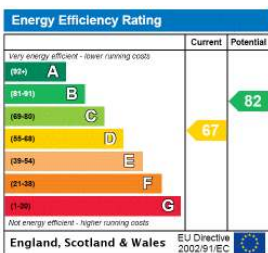


Altima Court



Approx. Gross Internal Floor Area 464 sq. ft / 43.19 sq. m

This floorplan is for illustration purposes only and is not to scale. The position and size of doors, windows, appliances and other features are approximate.



Dulwich | 020 8299 2722 | dulwich@winkworth.co.uk



winkworth.co.uk

See things differently

Winkworth wishes to inform prospective buyers and tenants that these particulars are a guide and act as information only. All our details are given in good faith and believed to be correct at the time of printing but they don't form part of an offer or contract. No Winkworth employee has authority to make or give any representation or warranty in relation to this property. All fixtures and fittings, whether fitted or not are deemed removable by the vendor unless stated otherwise and room sizes are measured between internal wall surfaces, including furnishings.