



MET APARTMENTS, LONDON, SE12
£2,250 PER MONTH UNFURNISHED

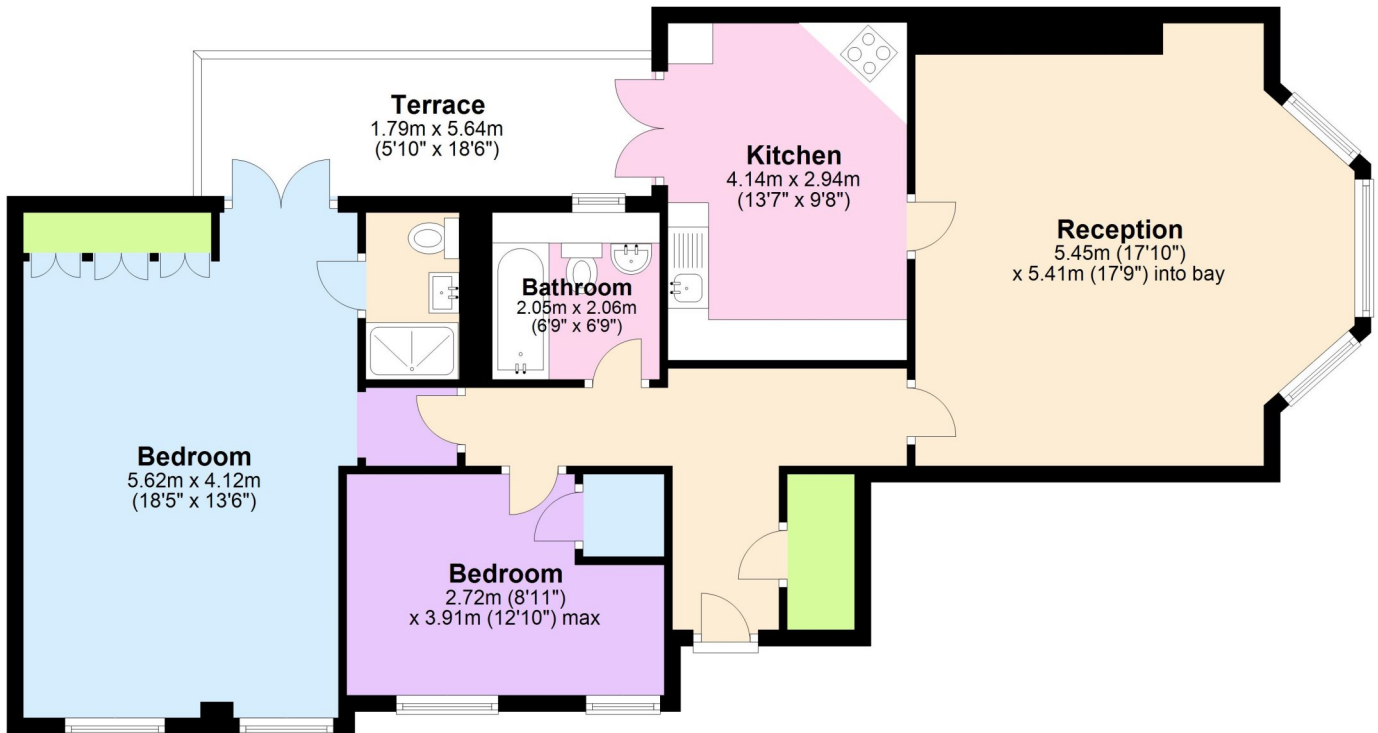
DESCRIPTION:

Located close to Blackheath village and station is this two bedroom, two bathroom apartment with private balcony and reserved parking. Offered unfurnished and available from 5th July 2025, your earliest viewing is essential.

Blackheath | 0208 8520999 | blackheath@winkworth.co.uk

Second Floor

Approx. 95.9 sq. metres (1032.8 sq. feet)



Total area: approx. 95.9 sq. metres (1032.8 sq. feet)

This floorplan is for illustration purposes only and is not to scale. The position and size of doors, windows, appliances and other features are approximate.

Energy Efficiency Rating		
	Current	Potential
Very energy efficient - lower running costs		
A (92+)		
B (81-91)		
C (69-80)		
D (55-68)		
E (39-54)		
F (21-38)		
G (1-20)		
Not energy efficient - higher running costs		
England, Scotland & Wales EU Directive 2002/91/EC		

Deposit: £2,596.15

Holding Deposit:

Council Tax Band:

Where no figures are shown, we have been unable to ascertain the information. All figures that are shown were correct at the time of printing.