



## Flat 102H, Honeycombe Chine

Boscombe Spa BH5 1LG

ASKING PRICE £300,000

Winkworth







## ASKING PRICE - £300,000

This luxurious, two double bed, two-bathroom apartment is ideally situated in Honeycombe Beach, a gated and exclusive development situated directly on Bournemouth's golden sandy beach which has just won several awards including "Best beach in the UK". The property boasts an expansive lounge/diner with open plan into the fully fitted, designer kitchen. Stunning sea views are found in both bedrooms and the main living area. Beach living is right on your doorstep with the local favorite – Urban Reef restaurant and Wood fired Pizza kitchen providing al-fresco dining options as well as surf and water sports hire. The promenade leads from Hengistbury head nature reserve all the way to the exclusive enclave of Sandbanks.

A wonderful property with no forward chain, this would make an ideal holiday home with its beach-side location or wake up to the sound of the waves every day!

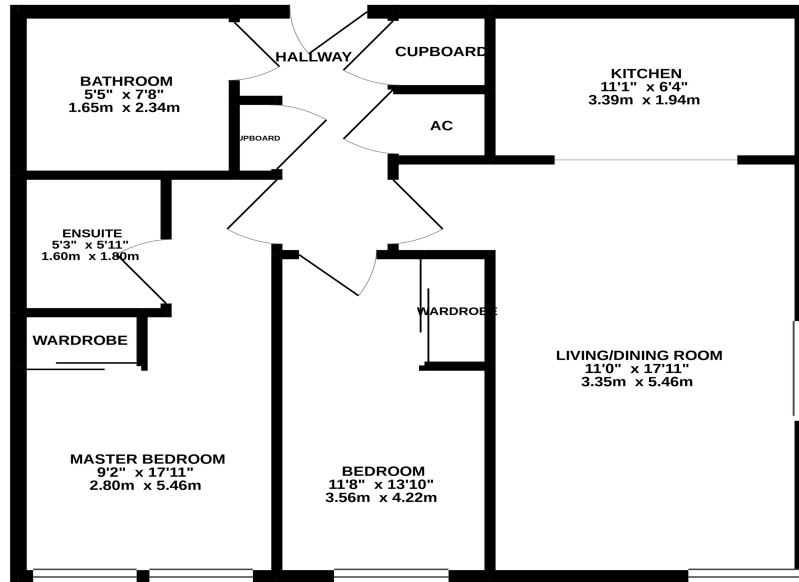
Two Double Bedrooms | Open-plan Lounge / Kitchen | En-suite | Modern Bathroom | Secure Parking | Beach-front | Juliette Balcony | Sea Views | Pets By Consent

Leasehold -132 years Remaining | EPC - C | Council Tax - E

01202 434365 |  
southbourne@winkworth.co.uk



## HONEYCOMBE BEACH



Whilst every attempt has been made to ensure the accuracy of the floorplan contained here, measurements of doors, windows, rooms, and any other items are approximate and no responsibility is taken for any error, omission or mis-statement. This plan is for illustrative purposes only and should be used as such by any prospective purchaser. The services, systems and appliances shown have not been tested and no guarantee as to their operability or efficiency can be given.  
Made with Metreplex ©2020

**DISCLAIMER:** Winkworth wishes to inform prospective buyers that these particulars are a guide and act as information only. All our details are given in good faith and believed to be correct at the time of issue but they don't form part of an offer or contract. No Winkworth employee has authority to make or give any representation or warranty in relation to this property. All fixtures and fittings, whether fitted or not are deemed removable by the vendor unless stated otherwise and room sizes are measured between internal wall surfaces, including furnishings

Boscombe is the suburb of Bournemouth and is located to the south east and neighbours both Bournemouth and Southbourne. Boscombe High Street offers a varied shopping experience with a number of well known high street stores. The area benefits from a number of local attractions including the award-winning blue flag sandy beaches with a level walk promenade extending from Hengistbury Head through to Sandbanks.

A local bus service provides links to Bournemouth and Poole with a different shopping experience together with a number of restaurants and bars providing a vibrant nightlife. A local train station provides direct links to Southampton, Southampton Airport and London which is approximately 100 miles away.

Bournemouth International airport (6 miles) offers a varied schedule of flights to a number of European destinations.



**Winkworth Southbourne**

29 Southbourne Grove, Bournemouth, Dorset, BH6 3QT

01202 434365 | [southbourne@winkworth.co.uk](mailto:southbourne@winkworth.co.uk)

[winkworth.co.uk/southbourne](http://winkworth.co.uk/southbourne)

**Winkworth**