



COLEFAX BUILDING, PLUMBERS ROW, LONDON, E1
£399,950 LEASEHOLD

HIGHLY DESIRABLE ONE BEDROOM APARTMENT WITHIN THE ALDGATE TRIANGLE

Shoreditch | 020 7749 7650 | shoreditch@winkworth.co.uk

Winkworth

winkworth.co.uk

See things differently



DESCRIPTION:

EWS1 COMPLIANT - A1 RATING Fantastic second floor one-bedroom apartment within this highly sought after building on Plumbers Row. The development features 24hr concierge service, gym, lift, entry phone system, access to fibre optic broadband and wonderful communal roof terrace. The property comprises entrance hallway leading to west facing living room with Juliette balcony and semi open-plan kitchen. The property also boasts a large double bedroom with fitted wardrobes, storage cupboard in the hallway and family bathroom.

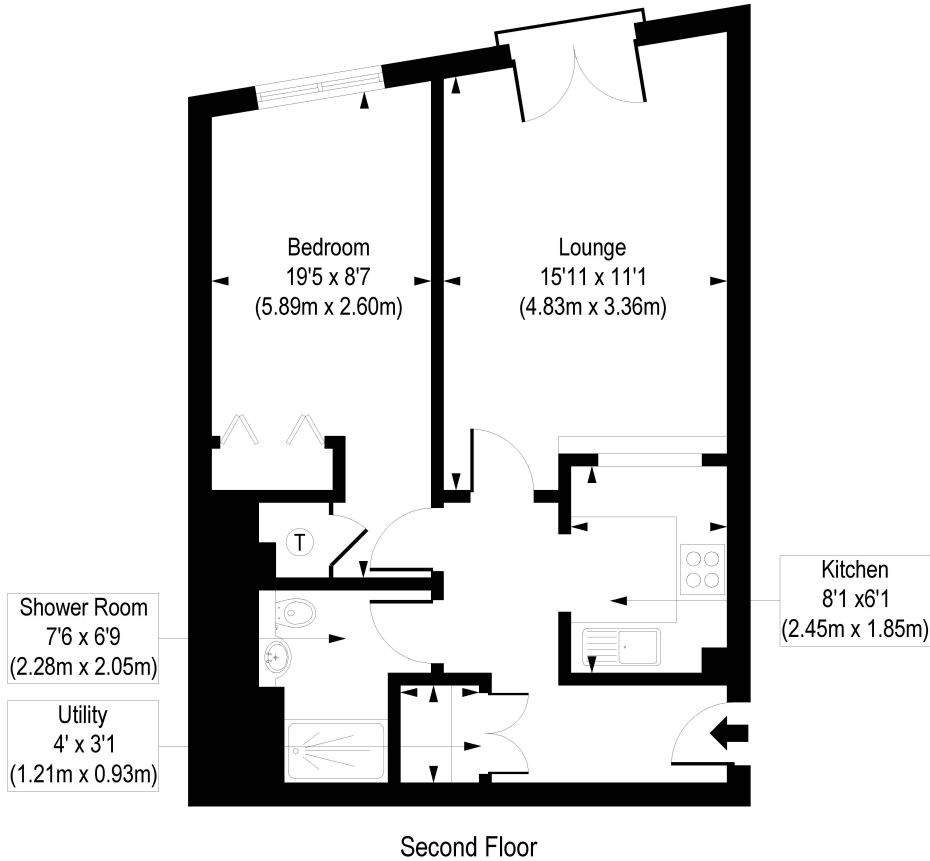
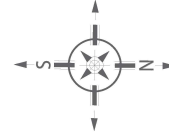
Situated on Plumbers Row this property offers numerous transport options including Aldgate, Aldgate East and Whitechapel (Crossrail) underground stations are all within close proximity. There is also a wealth of local amenities on your doorstep with Brick Lane and Spitalfields markets a short distance away with their boutique shops, cafes, bars and restaurants.

Winkworth



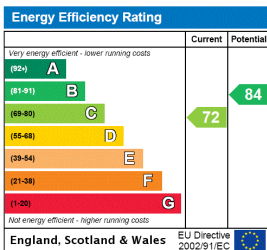
Winkworth

Colefax Building, Plumbers Row, E1
 Approx. Gross Internal Floor Area 552 sq. ft / 51.30 sq. m



COMPLIANT WITH RICS CODE OF MEASURING PRACTICE. Floorplan is for illustrative purposes only and is not to scale. Every attempt has been made to ensure the accuracy of the floorplan shown, however all measurements, fixtures, fittings and data shown are an approximate interpretation for illustrative purposes only. Liability for errors, omissions or mis-statement through negligence or otherwise is hereby excluded.

This floorplan is for illustration purposes only and is not to scale. The position and size of doors, windows, appliances and other features are approximate.



Shoreditch | 020 7749 7650 | shoreditch@winkworth.co.uk



winkworth.co.uk

See things differently

Winkworth wishes to inform prospective buyers and tenants that these particulars are a guide and act as information only. All our details are given in good faith and believed to be correct at the time of printing but they don't form part of an offer or contract. No Winkworth employee has authority to make or give any representation or warranty in relation to this property. All fixtures and fittings, whether fitted or not are deemed removable by the vendor unless stated otherwise and room sizes are measured between internal wall surfaces, including furnishings.