



5 BUDD GROVE, WINNERSH, WOKINGHAM, BERKSHIRE, RG41 5SQ  
**£515,000 FREEHOLD**

NESTLED IN A PEACEFUL SETTING WITHIN THE SOUGHT-AFTER  
 HATCHWOOD MILL DEVELOPMENT, THIS BEAUTIFULLY PRESENTED  
 THREE-BEDROOM FAMILY HOME OFFERS WELL-BALANCED  
 ACCOMMODATION ACROSS TWO FLOORS.

**Winkworth**

Wokingham | 01189 072777 | [wokingham@winkworth.co.uk](mailto:wokingham@winkworth.co.uk)

for every step...

[winkworth.co.uk](http://winkworth.co.uk)



## DESCRIPTION:

Nestled in a peaceful setting within the sought-after Hatchwood Mill development, this beautifully presented three-bedroom family home offers well-balanced accommodation across two floors.

The ground floor features a stylish and well-equipped kitchen/breakfast room that enjoys views of and direct access to a private rear garden. Additionally, there is a spacious utility/cloakroom and a bright, generously sized living/dining room, enhanced by multiple aspects and two charming box bay windows that further amplify the sense of space.

Upstairs, the first floor comprises three well-proportioned bedrooms, the family bathrooms and an en-suite to the master bedroom.

Externally, the property benefits from a secluded rear garden and off-road parking for one vehicles at the front with an additional visitor parking space.

Ideally positioned within highly regarded school catchment areas and offering convenient access to local amenities—including a variety of shops, a supermarket, and Winnersh mainline railway station—this home is well-suited to a wide range of buyers.

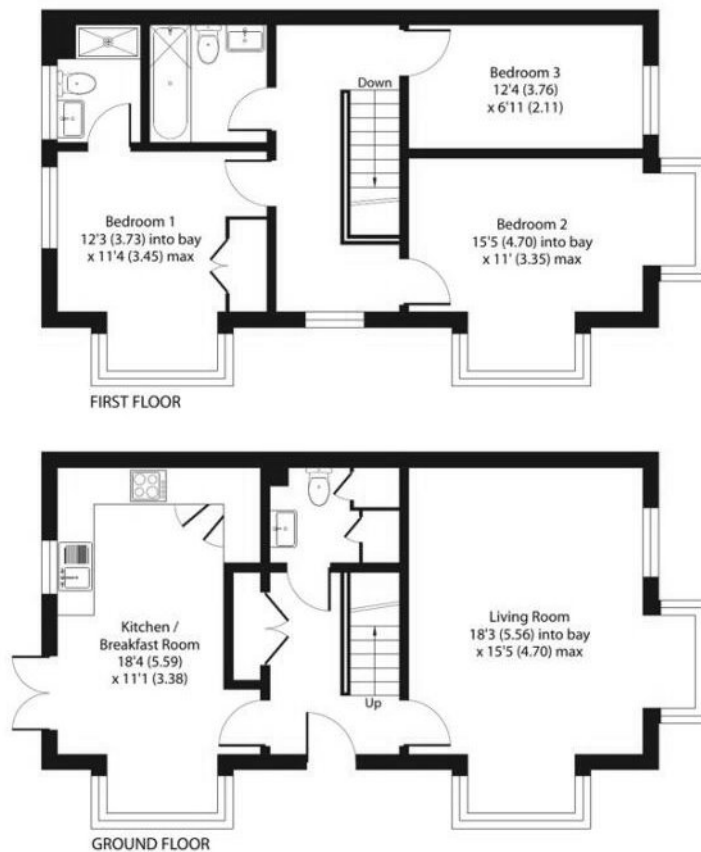
## AT A GLANCE

- Sought after location
- Spacious living areas
- modern kitchen/breakfast room
- Generous living/dining room
- Three well-sized bedrooms
- Private rear garden
- Off road parking
- Excellent commuter connectivity
- Ultrafast broadband 1800Mbps
- Mobile coverage EE, Vodafone, Three and O2
- Satellite/Fibre TV available BT & Sky

**Tenure:** Freehold

**Council Tax Band:** D



**Budd Grove, Winnersh, Wokingham, RG41**

Approximate Area = 1084 sq ft / 100.7 sq m

This floorplan is for illustration purposes only and is not to scale. The position and size of doors, windows, appliances and other features are approximate.

Wokingham | 01189 072777 | [wokingham@winkworth.co.uk](mailto:wokingham@winkworth.co.uk)

[winkworth.co.uk](http://winkworth.co.uk)

Winkworth wishes to inform prospective buyers and tenants that these particulars are a guide and act as information only. All our details are given in good faith and believed to be correct at the time of printing but they don't form part of an offer or contract. No Winkworth employee has authority to make or give any representation or warranty in relation to this property. All fixtures and fittings, whether fitted or not are deemed removable by the vendor unless stated otherwise and room sizes are measured between internal wall surfaces, including furnishings.

We are required by law to conduct anti-money laundering checks on all those buying a property. Whilst we retain responsibility for ensuring checks and any ongoing monitoring are carried out correctly, the initial checks are carried out on our behalf by Landmark who will contact you once you have had an offer accepted on a property you wish to buy. The cost of these checks is £15 (plus VAT) per person and this will need to be paid by you in advance of us issuing a memorandum of sale, directly to Landmark, and is non-refundable.