



## Lithos Road, NW3

£525,000 *Leasehold*



A charming two double-bedroom flat, situated on the fourth floor of this modern purpose-built development. The flat offers two double bedrooms, a family bathroom, and a semi-open plan kitchen/reception room. The reception opens up onto a private balcony.

Lithos Road is extremely well located for the shops, cafes, and various amenities that Finchley Road and West Hampstead have to offer.

It is also situated just 0.1m from Finchley Road and Frognal Overground Station, less than 0.4m from Finchley Road Station (Jubilee and Metropolitan Line), and within 0.65m of West Hampstead Thameslink Station.



**Winkworth West Hampstead**

020 7483 7602 | [westhampstead@winkworth.co.uk](mailto:westhampstead@winkworth.co.uk)

**Winkworth**

for every step...





## KEY FEATURES

- Two Double Bedrooms
- Family Bathroom
- Semi-Open Plan Kitchen/Reception Room
- Private Balcony
- Communal Gardens
- Passenger Lift



## MATERIAL INFO

**Tenure:** Leasehold

**Lease Expiry Date:** 01/01/2132

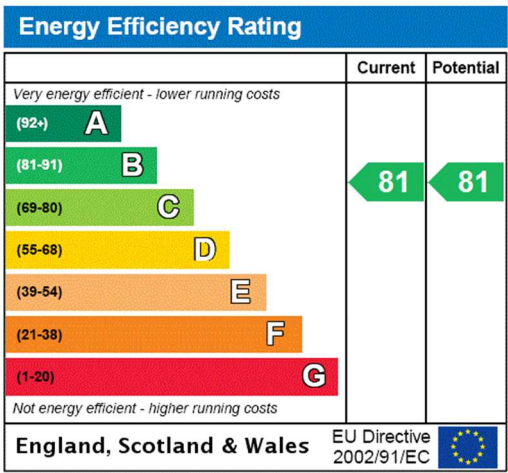
**Service Charge:** £2,916.96 per annum

**Council Tax Band:** E

**EPC rating:** B







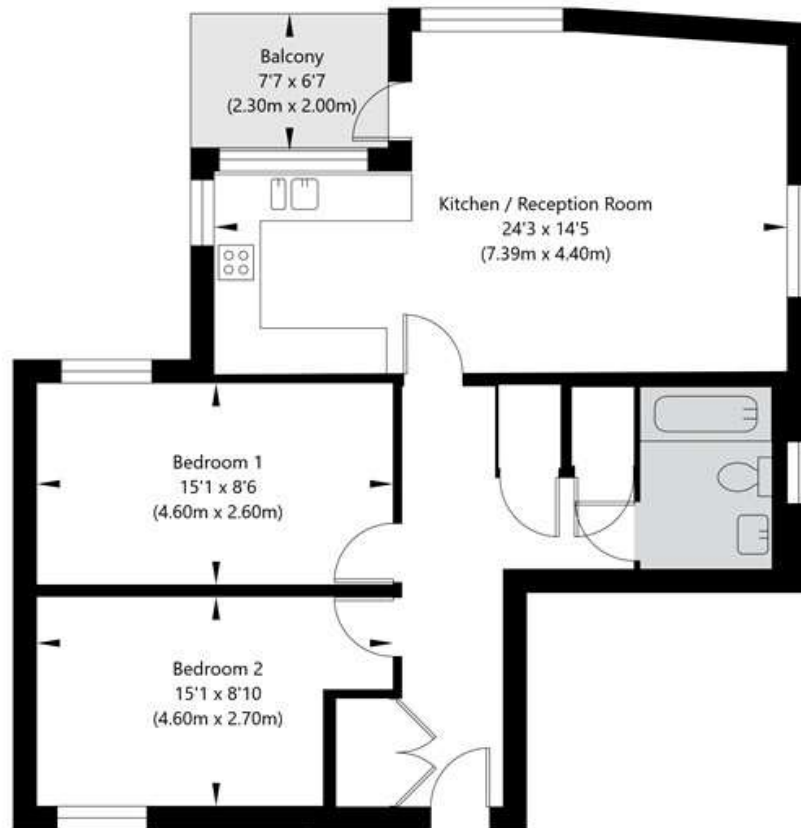
For more information, scan the QR code or visit the link below



<https://www.winkworth.co.uk/sale/property/WHP240169>

## Lithos Road, London, NW3 6BF

Fourth Floor  
GROSS INTERNAL FLOOR AREA  
APPROX. 70.24 SQ M / 756 SQ FT



APPROXIMATE GROSS INTERNAL FLOOR AREA 70.24 SQ M / 756 SQ FT  
THIS FLOOR PLAN IS FOR ILLUSTRATIVE PURPOSES ONLY AND  
SHOULD BE USED FOR THIS PURPOSE BY PROSPECTIVE APPLICANTS AS ITS NOT TO SCALE.

(c) AMBERSHORE PIX LIMITED / PHOTO - VIDEO - FLOOR PLANS / 0800 999 1577 / WWW.AMBERSHOREPIX.CO.UK

Where no figures are shown, we have been unable to ascertain the information. All figures that are shown were correct at the time of printing.

**Winkworth West Hampstead**

020 7483 7602 | [westhampstead@winkworth.co.uk](mailto:westhampstead@winkworth.co.uk)

**Winkworth**

for every step...

Winkworth wishes to inform prospective buyers and tenants that these particulars are a guide and act as information only. All our details are given in good faith and believed to be correct at the time of printing but they don't form part of an offer or contract. No Winkworth employee has authority to make or give any representation or warranty in relation to this property. All fixtures and fittings, whether fitted or not are deemed removable by the vendor unless stated otherwise and room sizes are measured between internal wall surfaces, including furnishings.