



## CHURCHILL GARDENS, UK, SW1V

£500,000

LEASEHOLD

### At a glance...

- Two Double Bedrooms
- Large Reception
- Separate Kitchen
- Private Balcony
- Top Floor with Lift
- Stunning Views

**Winkworth**

for every step...



Score	Energy rating	Current	Potential
92+	A		
81-91	B		
69-80	C		70   c
55-68	D		
39-54	E	51   E	
21-38	F		
1-20	G		

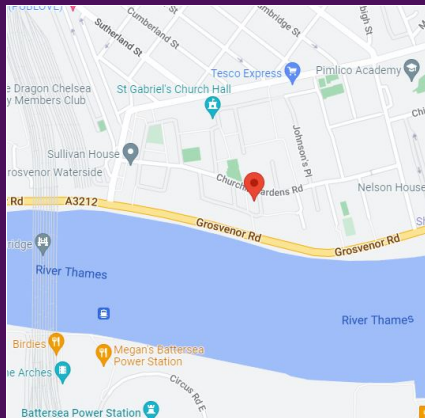
## CHURCHILL GARDENS, UK, SW1V

£500,000

LEASEHOLD

The spacious accommodation extends over 700 sqft and comprises a large, bright reception with plenty of room to dine and entertain and a separate fitted kitchen. There are two generous double bedrooms with storage, a family bathroom and a separate WC. The property benefits from a superb private balcony and convenient lift access.

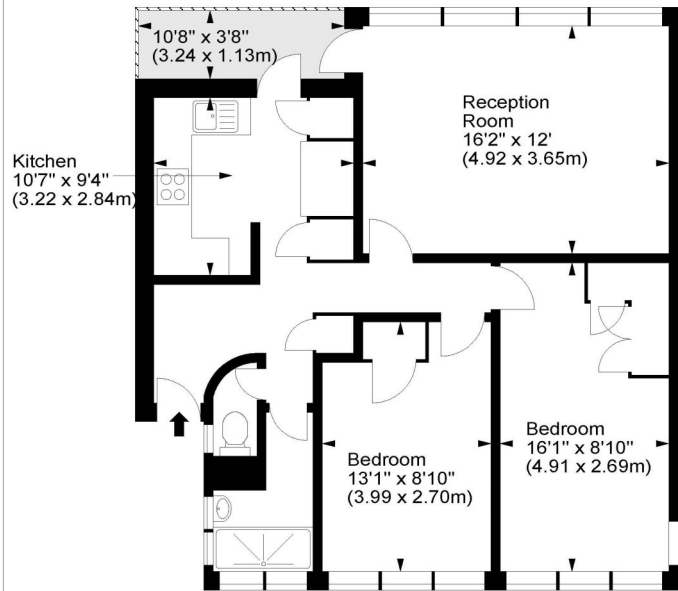
Situated within moments of the superb selection of local shops, cafes and restaurants on Lupus Street, the 'Moreton Triangle' and Wilton Road. The extensive collection of retail outlets and theatres at nearby Victoria are also within walking distance as are the green open spaces of St George's Square and Battersea Park.



winkworth wishes to inform prospective buyers and tenants that these particulars are a guide and act as information only. All our details are given in good faith and believed to be correct at the time of printing but they don't form part of an offer or contract. No winkworth employee has authority to make or give any representation or warranty in relation to this property. All fixtures and fittings, whether fitted or not are deemed removable by the vendor unless stated otherwise and room sizes are measured between internal wall surfaces - including fire-chimneys.

## Anson House, SW1

Approx. Gross Internal Area  
708 Sq Ft - 65.77 Sq M



Tenth Floor

For illustration purposes only. Not to scale.  
All measurements are taken and shown at floor level.  
www.r3photography.co.uk © Photography / Floor Plans / Lease Plans / EPCs



Pimlico & Westminster

020 7828 1786

pimlico@winkworth.co.uk

winkworth.co.uk/pimlico-westminster

**Winkworth**

for every step...