



RAINHAM ROAD, NW10  
**£2,400 PER MONTH UNFURNISHED**

**A FANTASTIC FIRST FLOOR TWO DOUBLE BEDROOM  
APARTMENT IN THIS EVER POPULAR STREET IN THE  
KENSAL TRIANGLE.**

Kensal Rise & Queens Park | 0208 960 4947 | [kensalrise@winkworth.co.uk](mailto:kensalrise@winkworth.co.uk)

**Winkworth**

for every step...

[winkworth.co.uk](http://winkworth.co.uk)





## DESCRIPTION:

Following a recent renovation this beautiful apartment is available to rent from 01/10/25

Comprises of two well-proportioned double bedrooms one with a bespoke ceiling height built in wardrobe, a fully tiled three piece bathroom, modern kitchen with lots of storage and modern appliances as well as stylish bright bay fronted reception room.

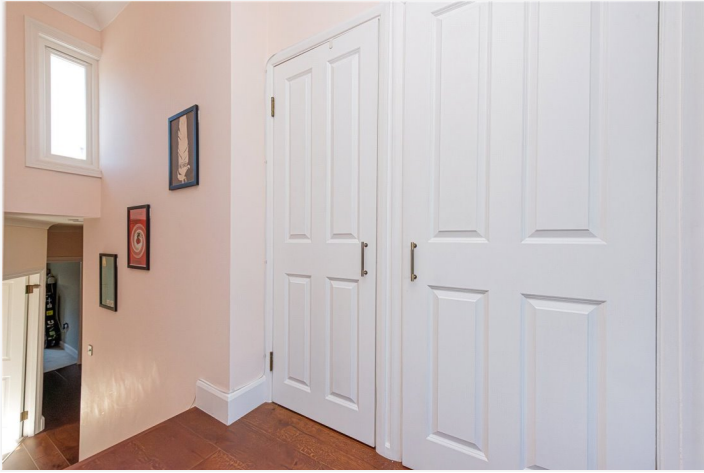
Additional features include a modern boiler, good quality hard wood flooring throughout reception room and hallways, two large storage cupboards (one being used as a utility cupboard), modern appliances, double glazing and stylish radiators.

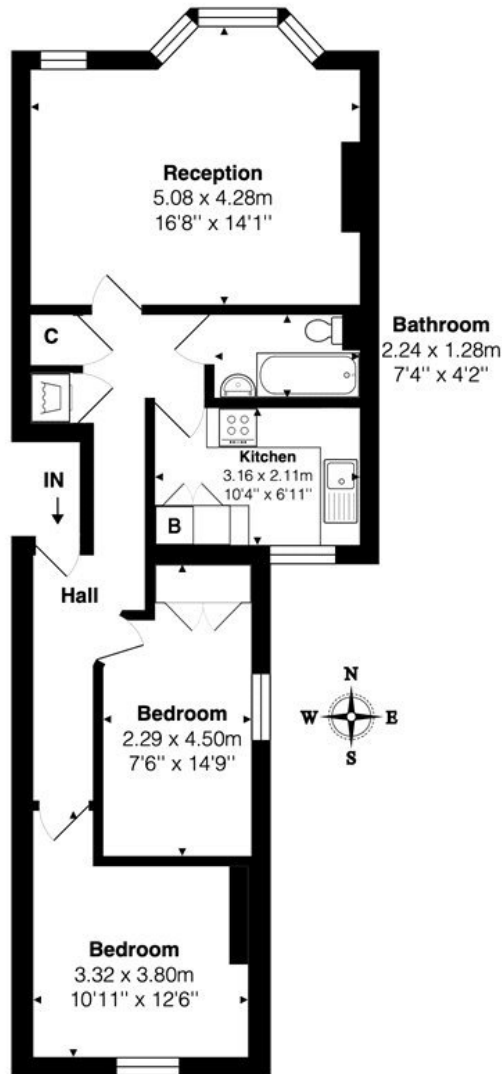
Please speak to Winkworth to find out more.

Council tax - Band C

Ward - Queens Park







**1st Floor**

**Total Area: 62.9 m<sup>2</sup> ... 677 ft<sup>2</sup>**

All measurements are approximate and for display purposes only

This floorplan is for illustration purposes only and is not to scale. The position and size of doors, windows, appliances and other features are approximate.

Energy Efficiency Rating		
	Current	Potential
Very energy efficient - lower running costs		
(92+) <b>A</b>		
(81-91) <b>B</b>		
(69-80) <b>C</b>		
(55-68) <b>D</b>	59	63
(39-54) <b>E</b>		
(21-38) <b>F</b>		
(1-20) <b>G</b>		
Not energy efficient - higher running costs		
England, Scotland & Wales		
EU Directive 2002/91/EC		

**Deposit:** 5 weeks rent

**Holding Deposit:** 1 weeks rent

**Council Tax Band:** C

Where no figures are shown, we have been unable to ascertain the information. All figures that are shown were correct at the time of printing.

**Winkworth**

**Kensal Rise & Queens Park** | 0208 960 4947 | kensalrise@winkworth.co.uk

**for every step...**

**winkworth.co.uk**

Winkworth wishes to inform prospective buyers and tenants that these particulars are a guide and act as information only. All our details are given in good faith and believed to be correct at the time of printing but they don't form part of an offer or contract. No Winkworth employee has authority to make or give any representation or warranty in relation to this property. All fixtures and fittings, whether fitted or not are deemed removable by the vendor unless stated otherwise and room sizes are measured between internal wall surfaces, including furnishings.