



## GODOLPHIN HOUSE, LONDON, NW3 £675,000 SHARE OF FREEHOLD

We are delighted to offer for sale this bright and attractive two double bedroom, second floor apartment with lift in a popular and sought-after purpose built block. The property has two double bedrooms, a large separate kitchen and family bathroom. The apartment also benefits from a garage with storage room and is being sold with a share of freehold and is offered chain free.

Godolphin House is conveniently located for access to Swiss Cottage Underground Station (Jubilee Line - 0.5 miles), Finchley Road Underground Station (Metropolitan & Jubilee Lines - 0.6 miles), South Hampstead Overground Station (0.2 miles) and the shops, restaurants and leisure facilities at the O2 Centre and nearby West Hampstead and St John's Wood.

Two Double Bedrooms | Family Bathroom | Passenger Lift | Large Separate Kitchen | Garage |  
Share of Freehold

**Winkworth**

for every step...

[winkworth.co.uk/west-hampstead](https://www.winkworth.co.uk/west-hampstead)

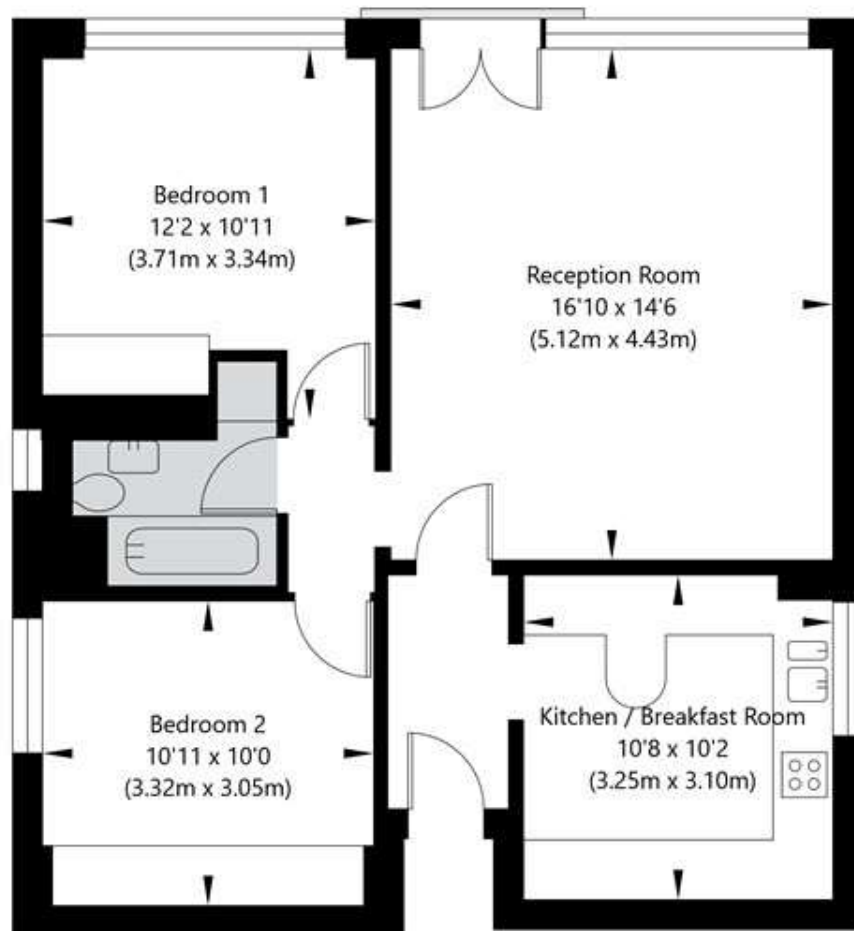




Fellows Road, London, NW3 3LG



Second Floor  
GROSS INTERNAL FLOOR AREA  
APPROX. 66.31 SQ M / 714 SQ FT



APPROXIMATE GROSS INTERNAL FLOOR AREA 66.31 SQ M / 714 SQ FT  
THIS FLOOR PLAN IS FOR ILLUSTRATIVE PURPOSES ONLY AND  
SHOULD BE USED FOR THIS PURPOSE BY PROSPECTIVE APPLICANTS AS ITS NOT TO SCALE.

(c) AMBERSHORE PIX LIMITED / PHOTO - VIDEO - FLOOR PLANS / 0800 999 1577 / WWW.AMBERSHOREPIX.CO.UK



Score	Energy rating	Current	Potential
92+	A		
81-91	B		
69-80	C	75 C	78 C
55-68	D		
39-54	E		
21-38	F		
1-20	G		

**Tenure:** Share of Freehold

**Term:** Expires - 29/09/2957

**Service Charge:** £3,236 per annum

**Council Tax Band:** E

**Notes:** Images have been virtually staged using CGI and are for illustrative purposes only. They are intended to convey the concept and vision for the property. They are for guidance only, and may alter and do not necessarily represent a true and accurate depiction of the finished property.

Where no figures are shown, we have been unable to ascertain the information. All figures that are shown were correct at the time of printing.

Where no figures are shown, we have been unable to ascertain the information. All figures that are shown were correct at the time of printing. These particulars are not an offer or contract, nor part of one. You should not rely on statements by Winkworth in the particulars or by word of mouth or in writing "information" as being factually accurate about the property, its condition or its value. Winkworth does not have any authority to make any representations about the property, and accordingly any information given is entirely without responsibility on the part of the agents, seller(s) or lessor(s). These particulars are prepared on the basis of the information supplied by our client and are a rough guide for information only. The photographs show only certain parts of the property. We are not able to check all of the information and therefore are unable to guarantee accuracy. All interested parties are therefore advised to undertake all necessary inspections and checks that they deem appropriate. Where displayed, the square footage is taken from the floor plans, which are created by an independent supplier. These measurements are approximate and included for illustrative purposes only. The measurements may vary. Winkworth does not make any representation as to the accuracy of these measurements and you should seek to verify them for yourself. Winkworth accept no liability for any loss you may suffer if you rely on these measurements. All fixtures and fittings, whether fitted or not are deemed removable by the vendor unless stated. Any reference to alterations to, or use of, any part of the property does not mean that any necessary planning, building regulations or other consent has been obtained. Amenities and appliances have not been tested

**West Hampstead** | 142 West End Lane, London, NW6 1SD | 020 7483 7602 |

[westhampstead@winkworth.co.uk](mailto:westhampstead@winkworth.co.uk)

*[winkworth.co.uk/west-hampstead](http://winkworth.co.uk/west-hampstead)*



**for every step...**

Winkworth wishes to inform prospective buyers and tenants that these particulars are a guide and act as information only. All our details are given in good faith and believed to be correct at the time of printing but they don't form part of an offer or contract. No Winkworth employee has authority to make or give any representation or warranty in relation to this property. All fixtures and fittings, whether fitted or not are deemed removable by the vendor unless stated otherwise and room sizes are measured between internal wall surfaces, including furnishings.