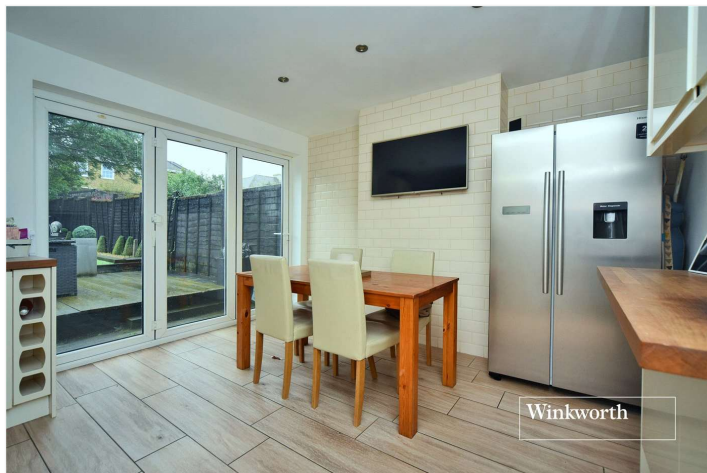




Winkworth



Winkworth



Winkworth

**ROUGEMONT AVENUE, MORDEN, SM4**  
**£569,000 FREEHOLD**

**A BEAUTIFULLY PRESENTED THREE BEDROOM  
 FAMILY HOME, WITHIN EASY REACH OF TRANSPORT  
 LINKS AND WELL REGARDED SCHOOLS**

**Winkworth**

Cheam Office | 020 8770 7766 | [cheam@winkworth.co.uk](mailto:cheam@winkworth.co.uk)

[winkworth.co.uk](http://winkworth.co.uk)

See things differently



## AT A GLANCE

- 3 Bedrooms
- Living Room
- Kitchen/Dining Room
- Family Bathroom
- Rear Garden Approx 80ft
- Off Street Parking
- No Onward Chain
- Council Tax Band D
- EPC Rating C

## DESCRIPTION

This beautifully presented three bedroom family home is set within a popular location, within easy reach of mainline rail stations and just over a mile from Morden underground station. Numerous well regarded schools are also close by including Morden Primary School, Glenthorne School and Perseid School, which has an Ofsted rating of 'Outstanding'.

Features on the ground floor include a spacious reception room with a large, feature bay window to the front aspect, along with a modern, open plan kitchen/diner. Upstairs, you will find three generously sized bedrooms and a stunning shower room.

Outside, the property offers a landscaped rear garden which extends to around 80 feet, complete with two decked seating areas and rear access. To the front of the property, a brick paved driveway provides off street parking.

No onward chain.





Winkworth



Winkworth



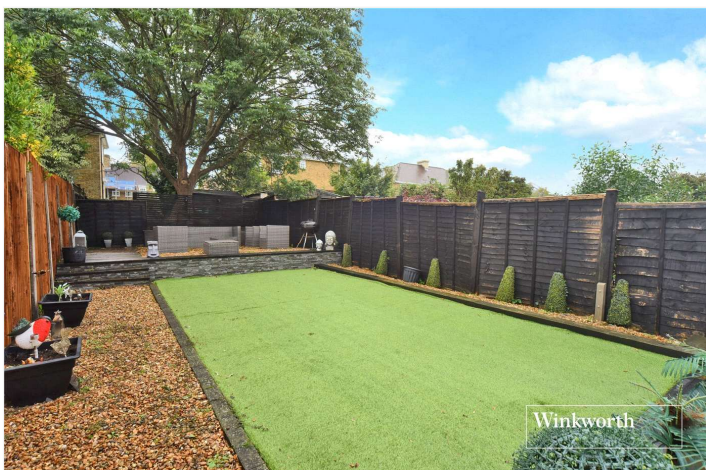
Winkworth



Winkworth



Winkworth



Winkworth

## ACCOMMODATION

**Reception Room - 14'10" x 12'1" Max (4.52m x 3.68m Max)**

**Kitchen/Dining Room - 17'3" x 12' Max (5.26m x 3.66m Max)**

**Bedroom - 15'10" x 12'10" Max (4.83m x 3.9m Max)**

**Bedroom - 12'1" x 10'2" (3.68m x 3.1m)**

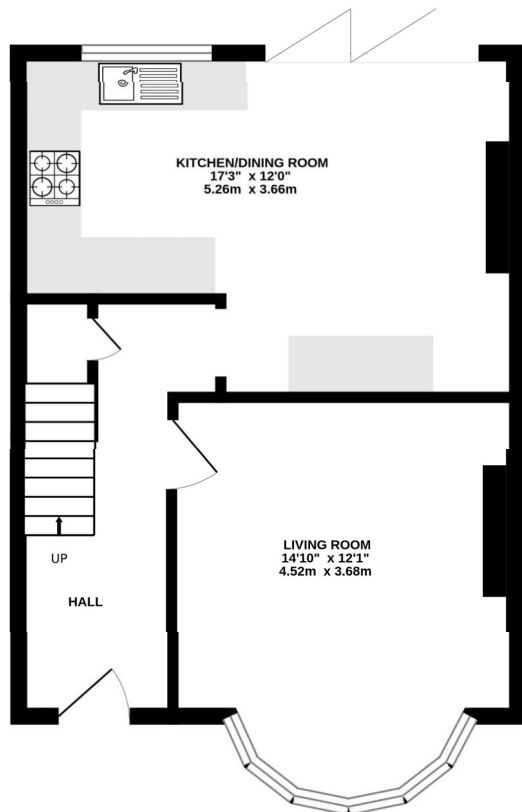
**Bedroom 7'10 x 6'10**

**Bathroom - 7'9" x 7'2" (2.36m x 2.18m)**

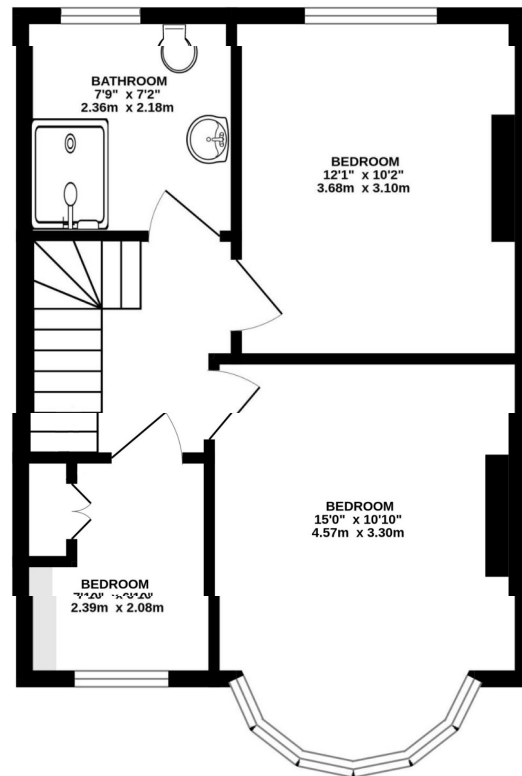
**Rear Garden - Approx 80' (Approx 24.38m)**

**Off Street Parking**

**No Onward Chain**



GROUND FLOOR



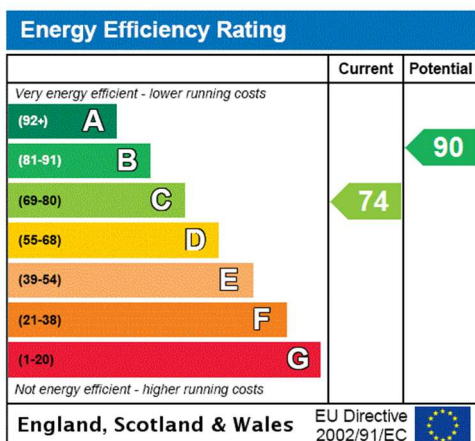
FIRST FLOOR

**Rougemont Avenue, Morden SM4 5PY**  
INTERNAL FLOOR AREA (APPROX.) 862 sq ft/ 80.0 sq m  
Garden extends to 80' (24.4m) approx.

Whilst every attempt has been made to ensure the accuracy of this floor plan, measurement of doors, windows, rooms and any other items are approximate and no responsibility is taken for any error, omission or mis-statement. Made with Metropix © 2024.

**Winkworth**

This floorplan is for illustration purposes only and is not to scale. The position and size of doors, windows, appliances and other features are approximate.



**Winkworth**

[winkworth.co.uk](http://winkworth.co.uk)

See things differently

Winkworth wishes to inform prospective buyers and tenants that these particulars are a guide and act as information only. All our details are given in good faith and believed to be correct at the time of printing but they don't form part of an offer or contract. No Winkworth employee has authority to make or give any representation or warranty in relation to this property. All fixtures and fittings, whether fitted or not are deemed removable by the vendor unless stated otherwise and room sizes are measured between internal wall surfaces, including furnishings.