



CHURCH CRESCENT, LONDON, N3
£2,000,000 FREEHOLD

**A WONDERFUL, AND SPACIOUS, DOUBLE
 FRONTED, SEMI DETACHED FAMILY HOME -
 OOZING WITH CHARM AND CHARACTER**

Finchley | 020 8349 3388 | finchley@winkworth.co.uk

Winkworth

for every step...

winkworth.co.uk



DESCRIPTION:

Winkworth are pleased to offer this spectacular, and rarely available, five bedroom, double fronted, semi-detached family home, comprising of three reception rooms, conservatory, three bathrooms (one en-suite), fully fitted kitchen/dining room, high ceilings, period features throughout, storage and landscape garden. The property is situated within the catchment area of St Mary's School, walking distance to Finchley Central Station and shopping amenities.

Offered on a chain free basis an internal viewing is highly recommended.

AT A GLANCE

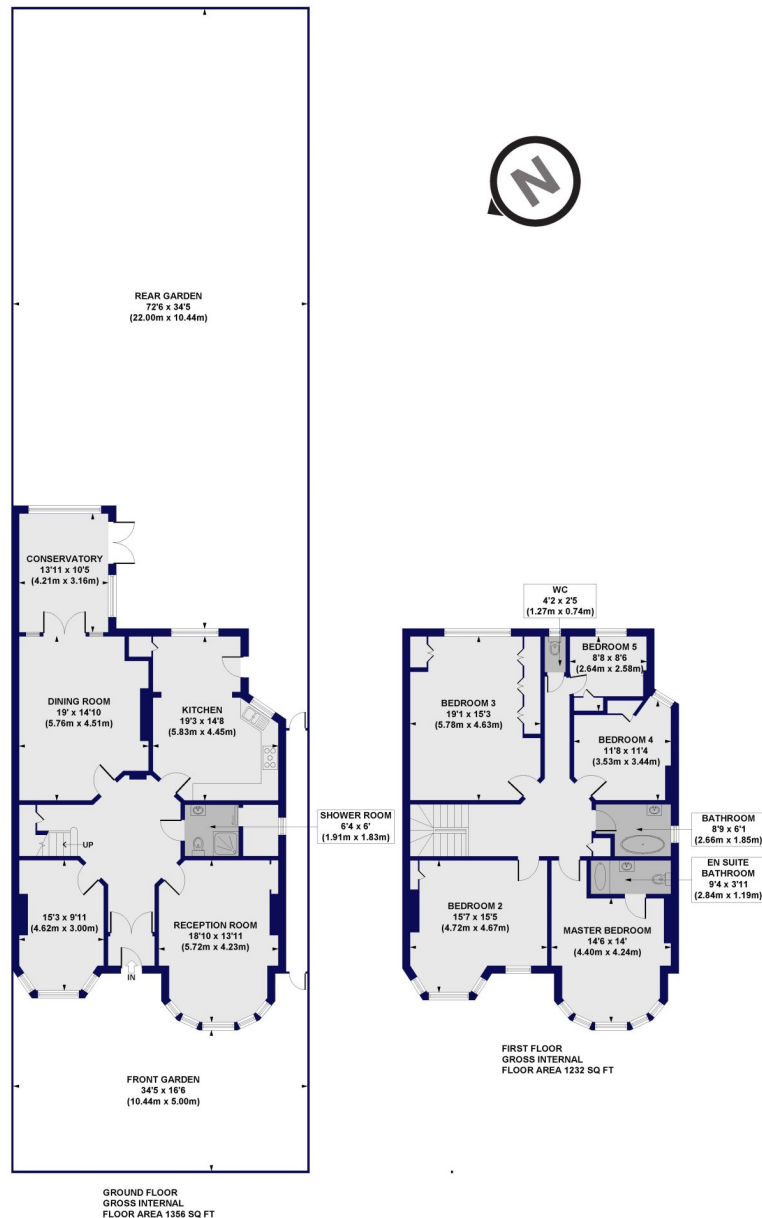
- Double fronted semi detached family home
- Set in a prime location in Finchley
- Three reception rooms
- Eat in kitchen
- Five bedrooms
- Front & rear garden
- Potential for further expansion stpp
- Chain free





Church Crescent, N3

Approx. Gross Internal Floor Area 2588 sq. ft / 240.44 sq. m



All measurements of walls, doors, windows, fittings and appliances, including their size and location, are shown as standard sizes and do not constitute any warranty or representation by the seller, their agent or CP Creative. Any intending purchaser must satisfy himself by inspection or otherwise as to the correctness of the information contained in these plans. This plan is for illustrative purposes only and should be used as such by any prospective purchasers.

Winkworth

This floorplan is for illustration purposes only and is not to scale. The position and size of doors, windows, appliances and other features are approximate.

| Score | Energy rating | Current | Potential |
|-------|---------------|---------|-----------|
| 92+ | A | | |
| 81-91 | B | | 83 B |
| 69-80 | C | | |
| 55-68 | D | 63 D | |
| 39-54 | E | | |
| 21-38 | F | | |
| 1-20 | G | | |

Tenure: Freehold

Council Tax Band: G

Where no figures are shown, we have been unable to ascertain the information. All figures that are shown were correct at the time of printing.

Finchley | 020 8349 3388 | finchley@winkworth.co.uk

Winkworth

for every step...

winkworth.co.uk

Winkworth wishes to inform prospective buyers and tenants that these particulars are a guide and act as information only. All our details are given in good faith and believed to be correct at the time of printing but they don't form part of an offer or contract. No Winkworth employee has authority to make or give any representation or warranty in relation to this property. All fixtures and fittings, whether fitted or not are deemed removable by the vendor unless stated otherwise and room sizes are measured between internal wall surfaces, including furnishings.