



ORCHARD CLOSE, W10  
**£2,383.33 PER MONTH FURNISHED**

## SPACIOUS TWO BEDROOM SPLIT LEVEL MAISONETTE WITH PRIVATE GARDEN

North Kensington | 020 7792 5000 | [northkensington@winkworth.co.uk](mailto:northkensington@winkworth.co.uk)

**Winkworth**

for every step...

[winkworth.co.uk](http://winkworth.co.uk)





## DESCRIPTION:

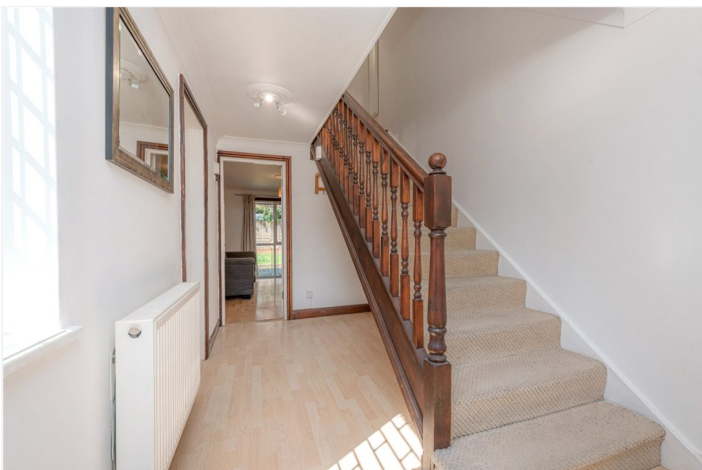
This lovely maisonette is set over the ground and first floors.

It comprises a very spacious living room leading onto a private back garden, a modern separate kitchen with integrated appliances, a further front garden, two double bedrooms, and a well-appointed bathroom.

The property is available furnished.

## AT A GLANCE

- PRIVATE GARDEN
- RECENT REDECORATION
- CLOSE TO TRANSPORT LINKS
- SPLIT LEVEL DUPLEX
- FURNISHED
- CLOSE TO PORTOBELLO ROAD



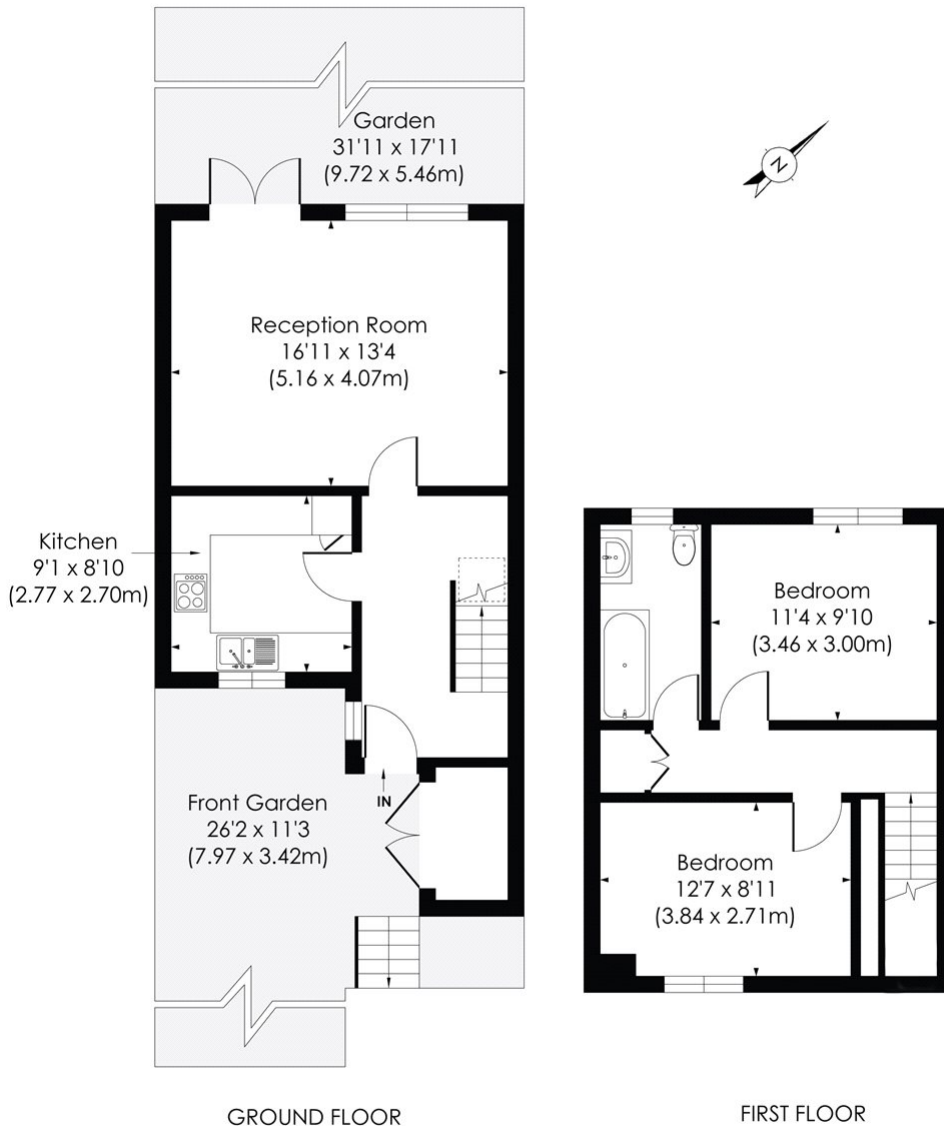




## ORCHARD CLOSE, W10

Approx. Gross Internal Floor Area

**804 Sq. ft/74.70 Sq. m**



© Pixangle Property Marketing Ltd. info@pixangle.com Tel: 0208 870 2118

**pixangle**  
PROPERTY MARKETING

This floor plan has been prepared for the purpose of illustration only in accordance with the latest RICS code of measuring practice and is not to scale. All measurements and areas are approximate and whilst every effort has been made to ensure the accuracy of the plan contained here, no responsibility is taken for any error, omission or misstatement.

This floorplan is for illustration purposes only and is not to scale. The position and size of doors, windows, appliances and other features are approximate.

North Kensington | 020 7792 5000 | northkensington@winkworth.co.uk

**Winkworth**

for every step...

*winkworth.co.uk*

Winkworth wishes to inform prospective buyers and tenants that these particulars are a guide and act as information only. All our details are given in good faith and believed to be correct at the time of printing but they don't form part of an offer or contract. No Winkworth employee has authority to make or give any representation or warranty in relation to this property. All fixtures and fittings, whether fitted or not are deemed removable by the vendor unless stated otherwise and room sizes are measured between internal wall surfaces, including furnishings.