



## Beechwood Hall, Finchley, London, N3

£530,000 *Share of Freehold*

2  1  1 

We are pleased to offer this bright and spacious two double bedroom apartment, set in a secure 1930s Art Deco mansion block, within close proximity to ample amenities and transport facilities of Temple Fortune, Kinloss Synagogue and College Farm.

### KEY FEATURES

- Well-presented apartment
- Prime location
- Spacious living/dining room
- Two double bedrooms
- Modern fitted kitchen & bathroom
- Direct access to communal gardens



### Finchley

020 8349 3388 | [finchley@winkworth.co.uk](mailto:finchley@winkworth.co.uk)

**Winkworth**

for every step...





The property has been fully refurbished to an exceptional standard throughout and is comprised of a spacious living/dining room, two double bedrooms, modern fitted kitchen and bathroom with direct access to communal gardens.





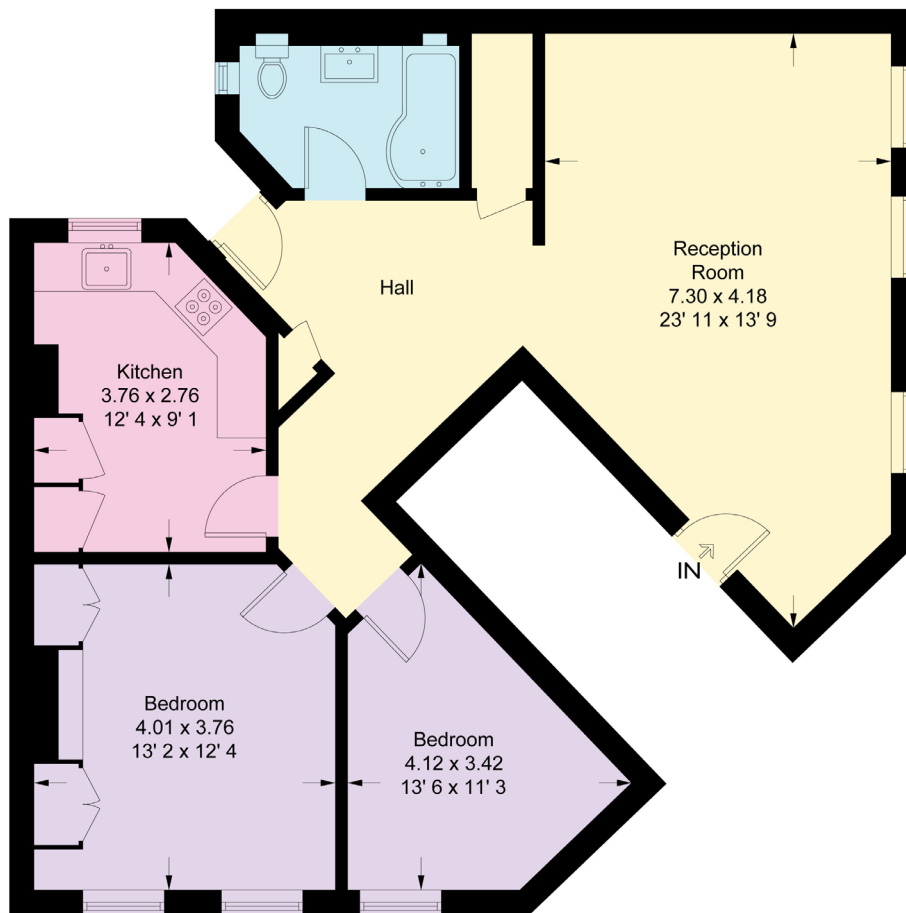


## MATERIAL INFO

**Tenure:** Share of Freehold  
**Service Charge:** £2717.7 per annum  
**Council Tax Band:** D  
**EPC rating:** C

# Beechwood Hall

Approximate Gross Internal Area = 867 sq ft / 80.6 sq m

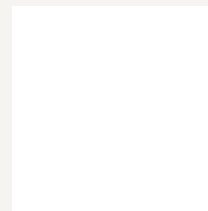


**Second Floor**

This plan is not to scale and must be used as layout guidance only. All measurements and areas are approximate and should not be relied upon to provide accurate information. This plan must not be relied upon when making property valuations, design considerations or any other such relevant decisions. We accept no responsibility or liability (whether in contract, tort or otherwise) in relation to any loss whatsoever arising from or in connection with any use of this plan or the adequacy, accuracy or completeness of it or any information within it.

Score	Energy rating	Current	Potential
92+	A		
81-91	B		
69-80	C	77 C	83 B
55-68	D		
39-54	E		
21-38	F		
1-20	G		

For more information, scan the QR code or visit the link below



<https://www.winkworth.co.uk/sale/property/FIN230351>

Where no figures are shown, we have been unable to ascertain the information. All figures that are shown were correct at the time of printing.

**Finchley**

020 8349 3388 | [finchley@winkworth.co.uk](mailto:finchley@winkworth.co.uk)

**Winkworth**

for every step...

Winkworth wishes to inform prospective buyers and tenants that these particulars are a guide and act as information only. All our details are given in good faith and believed to be correct at the time of printing but they don't form part of an offer or contract. No Winkworth employee has authority to make or give any representation or warranty in relation to this property. All fixtures and fittings, whether fitted or not are deemed removable by the vendor unless stated otherwise and room sizes are measured between internal wall surfaces, including furnishings.