

HIGHBURY PARK, HIGHBURY, LONDON, N5
£435,000 LEASEHOLD

A BRIGHT, ONE DOUBLE BEDROOM
APARTMENT POSITIONED MOMENTS FROM
HIGHBURY BARN.

Highbury | 0207 989 7000 | highbury@winkworth.co.uk



winkworth.co.uk

See things differently



DESCRIPTION:

A stunning, one double bedroom apartment positioned on the first floor of this handsome, red brick, Victorian building in Highbury, N5. Standing at 583 sqft, the property offers wonderfully bright rooms from an east to west facing aspect and has been tastefully decorated throughout. Accommodation comprises of a sensational living room spanning the full width of the building benefitting from three large sash windows. The separate kitchen includes plentiful worktop space and cleverly designed storage really maximising the space. A larger than average bedroom at the rear of the building benefits from a built-in wardrobes, while the property is completed with a recently renovated shower room.

Highbury Park is set moments from the famous green spaces of Clissold Park, Highbury Fields and the prestigious Highbury Barn. The property is seconds away from highly regarded local amenities such as Godfrey's butchers, La Fromagerie, Da Mario's delicatessen, Bournes fishmongers and Highbury Vintners, all of which are hugely popular with locals, as well as drawing those from further afield.

Excellent transport options include Highbury & Islington station (Victoria line & Overground) and Arsenal underground station (Piccadilly Line) along with excellent bus routes taking you into the City and West End.

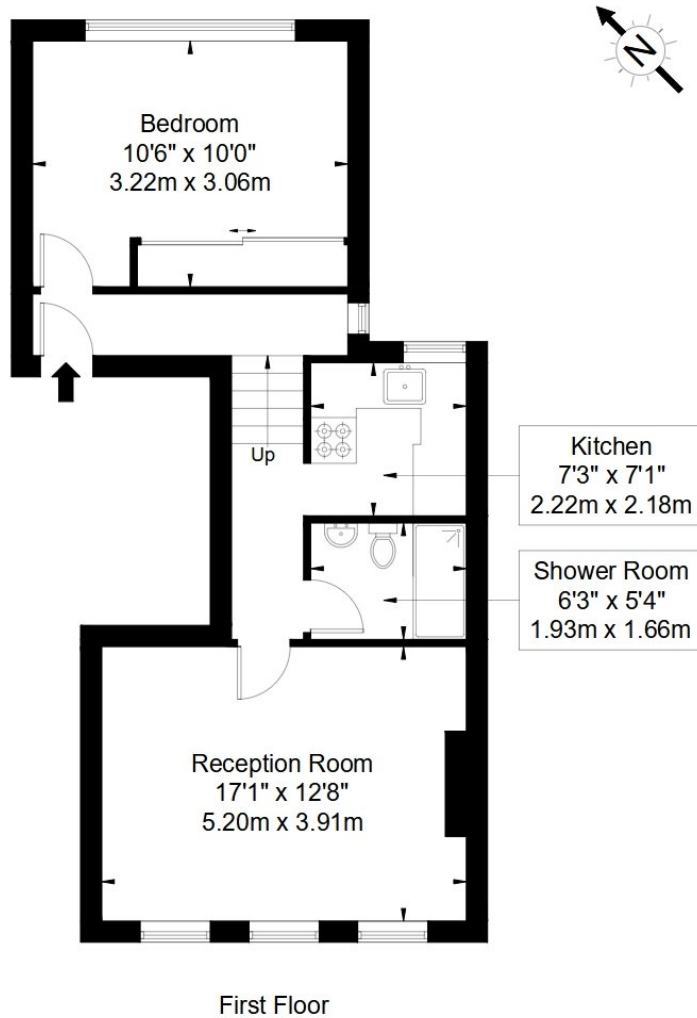
Winkworth



Winkworth

Highbury Park, N5 2XE

Approx Gross Internal Area = 54.17 sq m / 583 sq ft



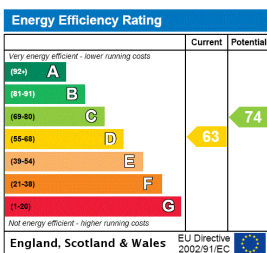
Ref :

Copyright **BLEU
PLAN**

The Floor plan is not to scale and measurements and areas shown are approximate and therefore should be used for illustrative purposes only. The plan has been prepared in accordance with the RICS code of Measuring Practice and whilst we have confidence in the information produced it must not be relied on. If there is any aspect of particular importance, you should carry out or commission your own inspection of the property.

Copyright @ BLEUPLAN

This floorplan is for illustration purposes only and is not to scale. The position and size of doors, windows, appliances and other features are approximate.



Highbury | 0207 989 7000 | highbury@winkworth.co.uk

Winkworth

winkworth.co.uk

See things differently

Winkworth wishes to inform prospective buyers and tenants that these particulars are a guide and act as information only. All our details are given in good faith and believed to be correct at the time of printing but they don't form part of an offer or contract. No Winkworth employee has authority to make or give any representation or warranty in relation to this property. All fixtures and fittings, whether fitted or not are deemed removable by the vendor unless stated otherwise and room sizes are measured between internal wall surfaces, including furnishings.