



WESTBOURNE GROVE, W11

£575 PER WEEK (£2,491.66 PCM) FURNISHED/ UNFURNISHED

A BRIGHT ONE BEDROOM PROPERTY ON THE FIRST FLOOR OF THIS PERIOD CONVERSION, SITUATED IN THIS PRIME LOCATION OF NOTTING HILL.

Notting Hill Lettings | 0207 727 3227 | nottinghill@winkworth.co.uk

Winkworth

for every step...

winkworth.co.uk



DESCRIPTION:

This bright property comprises of open plan, living/kitchen/dining area with a feature fireplace. The master bedroom facing away from the main road and shower room with heated towel rail. The property is double glazed throughout and offered on an unfurnished/furnished basis.

Utilities:

Electricity – Mains

Water – Mains

Sewerage – Mains

Heating – Gas

Broadband <https://checker.ofcom.org.uk/en-gb/broadband-coverage>

Mobile Coverage <https://checker.ofcom.org.uk/en-gb/mobile-coverage>

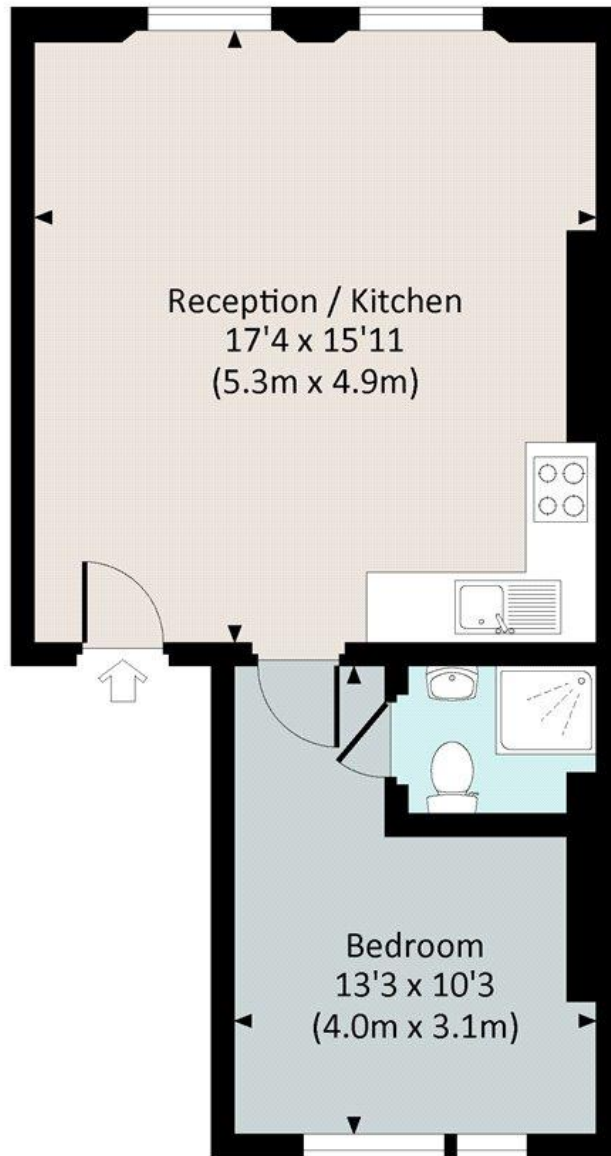
LOCATION:

Westbourne Grove runs through the heart of Notting Hill with many of the area's most fashionable boutiques and restaurants lined up along it and within easy walking distance of the transport links of Notting Hill Gate.



WESTBOURNE GROVE, W11

Approx. gross internal area
416 Sq Ft. / 38.6 Sq M.



FIRST FLOOR



All measurements have been made in accordance with RICS Code of Measuring Practice which are approximate only and only for illustrative purposes. For the avoidance of doubt, Dowling Jones Design shall not be liable for any reliance on these measurements. © 2018 www.dowlingjones.com 020 7610 9933

This floorplan is for illustration purposes only and is not to scale. The position and size of doors, windows, appliances and other features are approximate.

Energy Efficiency Rating		
	Current	Potential
Very energy efficient - lower running costs		
(90-100) A		
(81-89) B		
(72-80) C	75	75
(63-68) D		
(55-62) E		
(47-54) F		
(39-46) G		
Not energy efficient - higher running costs		
England, Scotland & Wales EU Directive 2002/91/EC		

Deposit: £2,875

Holding Deposit: £575

Council Tax Band: D (RBKC)

Where no figures are shown, we have been unable to ascertain the information. All figures that are shown were correct at the time of printing.

Notting Hill Lettings | 0207 727 3227 | nottinghill@winkworth.co.uk

Winkworth

for every step...

winkworth.co.uk

Winkworth wishes to inform prospective buyers and tenants that these particulars are a guide and act as information only. All our details are given in good faith and believed to be correct at the time of printing but they don't form part of an offer or contract. No Winkworth employee has authority to make or give any representation or warranty in relation to this property. All fixtures and fittings, whether fitted or not are deemed removable by the vendor unless stated otherwise and room sizes are measured between internal wall surfaces, including furnishings.