



Oaks Mead
Verwood BH31 6LJ
Guide Price £525,000

Winkworth



Guide Price £525,000
FREEHOLD

This light and airy, four/five bedroom, three bathroom detached house has been well maintained throughout and features a lovely secluded garden.

Further benefits include a driveway and tandem garage with light power and eaves storage.

Positioned in a particularly sought after cul-de-sac, walking distance from village amenities and picturesque walks for those who enjoy the outdoors!

Four Double Bedrooms
Two En-suite Shower Rooms & A Family Bathroom
Guest WC
Secluded Garden
Detached House
Driveway
Office
Sought After Location
Utility Room
Tandem Garage With Light, Power & Eaves Storage

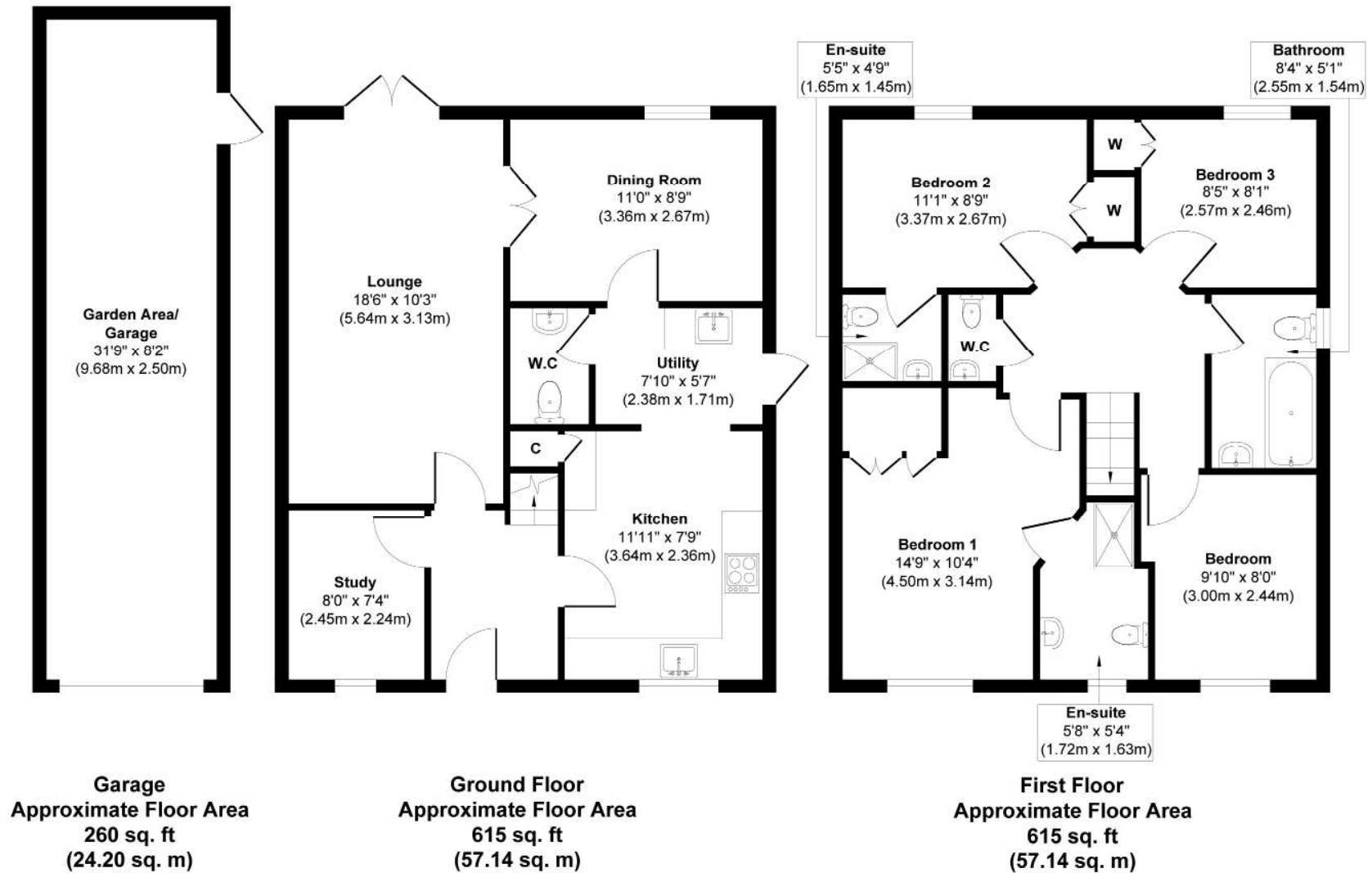
EPC TBC | Council Tax Band E

01202 434365
ferndown@winkworth.co.uk





Oakmead



Approx. Gross Internal Floor Area 1490 sq. ft / 138.48 sq. m.

Whilst every attempt has been made to ensure the accuracy of the floorplan shown, all measurements, positioning Fixtures fittings and any other data shown are an approximate interpretation for illustrative purposes only and are not to scale.

No responsibility is taken for any errors, omission, miss-statement or use of data show.

Produced by Home Focus Studio LTD



LOCATION

Positioned in a peaceful residential area just a short walk from amenities, and only moments from the A31 which provides quick access to the New Forest, Southampton and London for the commuter by car. There are bus routes close by giving you easy access to Bournemouth, Poole and Wimborne all of which have an excellent range of shops, bars, restaurants and leisure facilities. The property is conveniently located for the popular Moors Valley Country Park and Snowtrax Alpine Activity Centre and award winning beaches are also nearby. For the keen golfer, several of Dorset's premier golf clubs are within easy reach.

Winkworth Ferndown

406 Ringwood Road, Ferndown, Dorset, BH22 9AU

01202 434365 | ferndown@winkworth.co.uk

winkworth.co.uk/ferndown

Winkworth